



National Statistics Office of Georgia

RAPID ESTIMATES OF ECONOMIC GROWTH
AUGUST
2018

www.geostat.ge

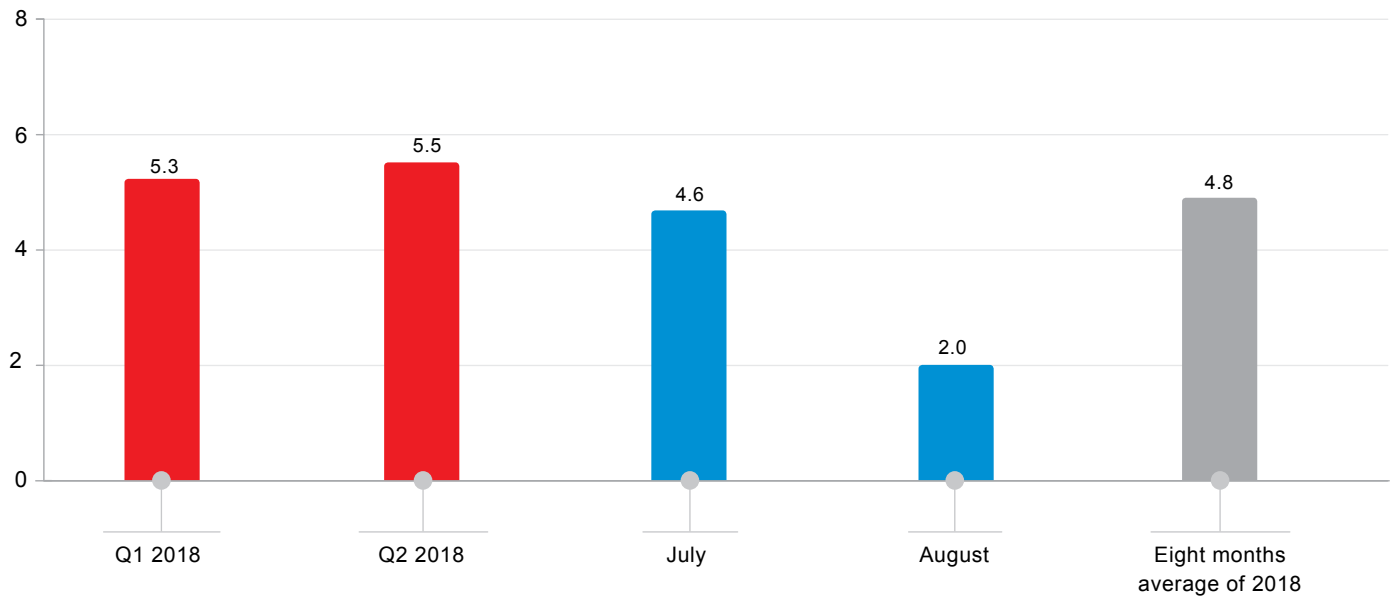
28.09.2018

28.09.2018

RAPID ESTIMATES OF ECONOMIC GROWTH, AUGUST 2018

The estimated real Gross Domestic Product (GDP) average growth for the first eight months of 2018 amounted to 4.8 percent y-o-y. The estimated real GDP growth rate in August 2018 equaled 2.0 percent y-o-y.

RAPID ESTIMATIONS OF ECONOMIC GROWTH, 2018 Y-O-Y (%)



In August 2018 the estimated real growth, compared to the same period of the previous year, was posted in the following activities: Financial Intermediation, Trade, Transport, Real Estate Activities, Hotels and Restaurants.

28.09.2018

MONTHLY ECONOMIC STATISTICS AUGUST 2018

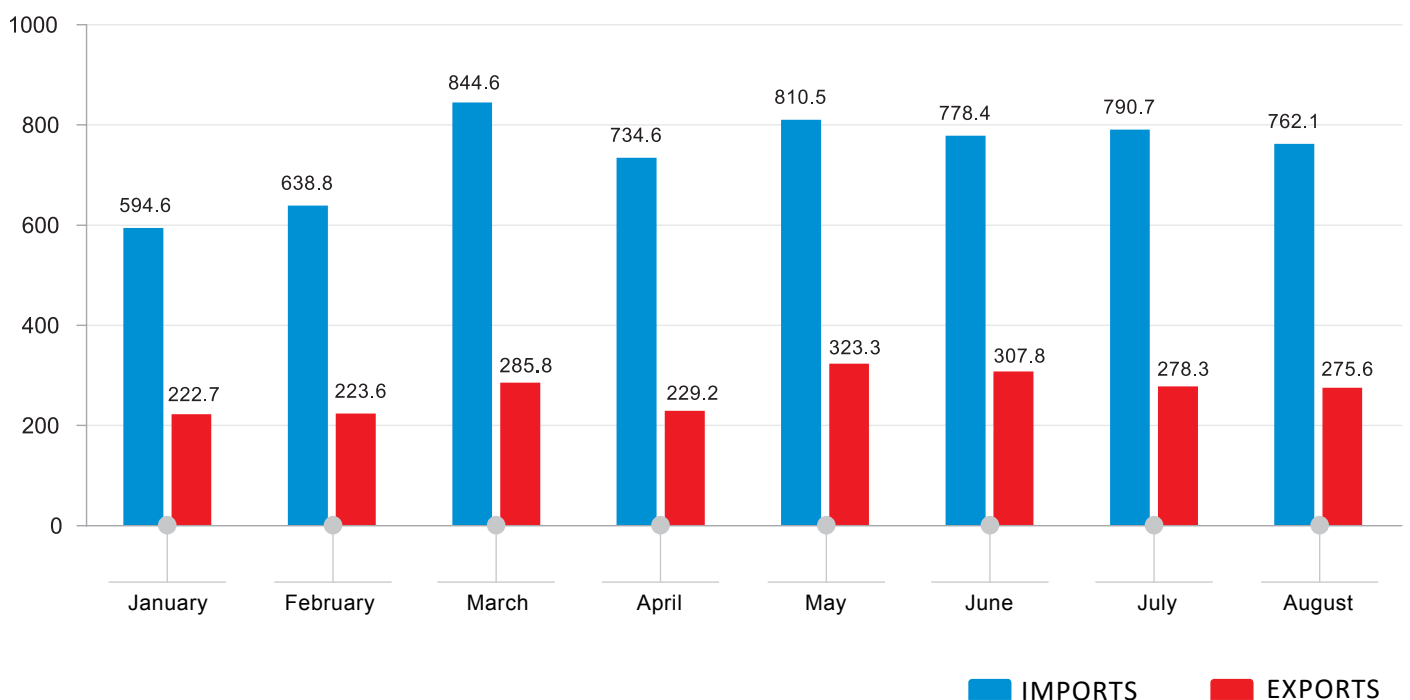
INDICATORS OF PRICE STATISTICS

INDICATOR	Y-O-Y	M-O-M
Consumer Price Index (CPI)	103.1	100.5
Producer Price Index (PPI) for industrial products	106.6	101.7

INDICATORS OF EXTERNAL MERCHANDISE TRADE STATISTICS IN JANUARY-AUGUST, 2018

INDICATOR	MIL. US DOLLARS	CHANGE (Y-O-Y, %)
Exports of goods (FOB)	2 146.4	27.1
Imports of goods (CIF)	5 954.3	21.0
External merchandise trade turnover	8 100.7	22.6

**EXTERNAL MERCHANDISE TRADE, 2018
(MIL. US DOLLARS)**

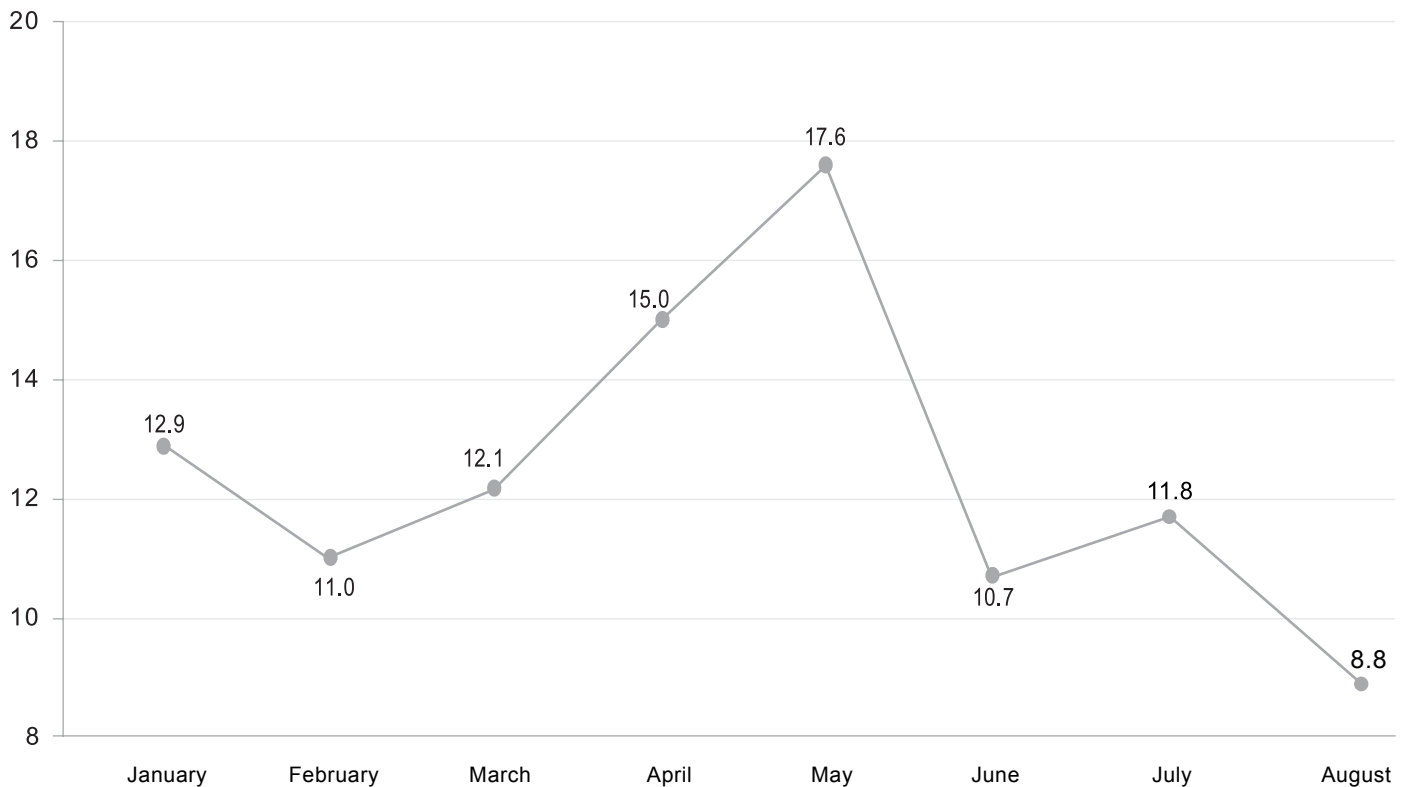


28.09.2018

INDICATORS OF BUSINESS STATISTICS

INDICATOR	AUGUST
Number of currently registered enterprises (unit)	4 387
Change of currently registered enterprises number (y-o-y, %)	21.1
Value Added Tax (VAT) payers' turnover used in rapid estimations of economic growth (mil. GEL)	6 105.7
Growth of VAT payers' turnover used in rapid estimations of economic growth (y-o-y, %)	8.8

CHANGE OF VAT PAYERS' TURNOVER USED IN RAPID ESTIMATIONS OF ECONOMIC GROWTH (Y-O-Y, %)

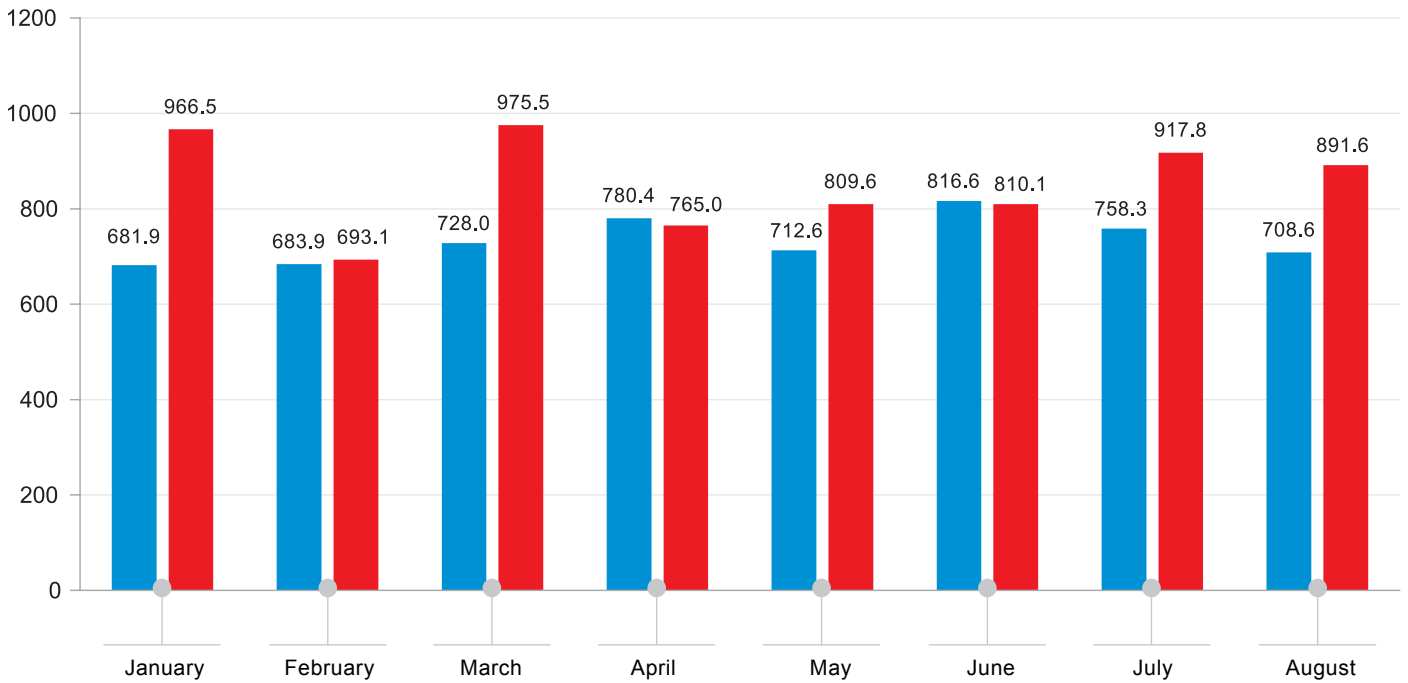


Source: Ministry of Finance of Georgia.

NATIONAL STATISTICS OFFICE OF GEORGIA

28.09.2018

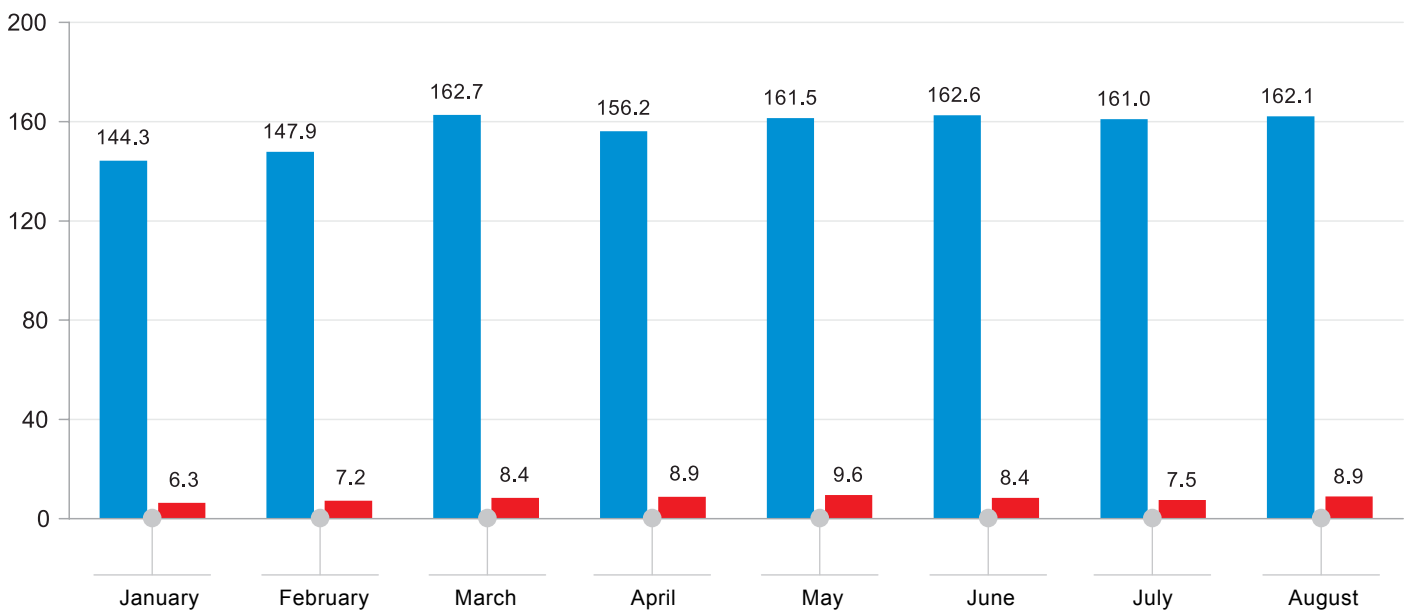
INDICATORS OF STATE BUDGET, 2018 (MIL. GEL)



Source: Ministry of Finance of Georgia.

EXPENSE REVENUE

OUTPUT OF BANKING SECTOR, 2018 (MIL. GEL)



Source: National Bank of Georgia.

COMMERCIAL BANKS NATIONAL BANK

28.09.2018

INFORMATION NOTE

Geostat produces monthly rapid estimations of real GDP growth rate using administrative data on VAT taxpayers' turnover, fiscal and monetary statistics. The compilation of rapid estimates is an internationally adopted practice to obtain preliminary monthly growth rate of real GDP. For those sectors, where preliminary monthly data do not exist (e.g. agriculture, non-observed economy etc.), the estimations are based on the data for previous periods.

Furthermore, the data on VAT taxpayers' turnover for the previous months might be updated on a monthly basis, resulting in corresponding adjustments of real GDP growth rate estimates.

Contact persons:

Levan Karsaulidze.

Tel.: (+995 32) 236 72 10 (302).

E-mail: Lkarsaulidze@geostat.ge; info@geostat.ge

Mariam Kavelashvili.

Tel.: (+995 32) 236 72 10 (020).

E-mail: mkavelashvili@geostat.ge; info@geostat.ge