

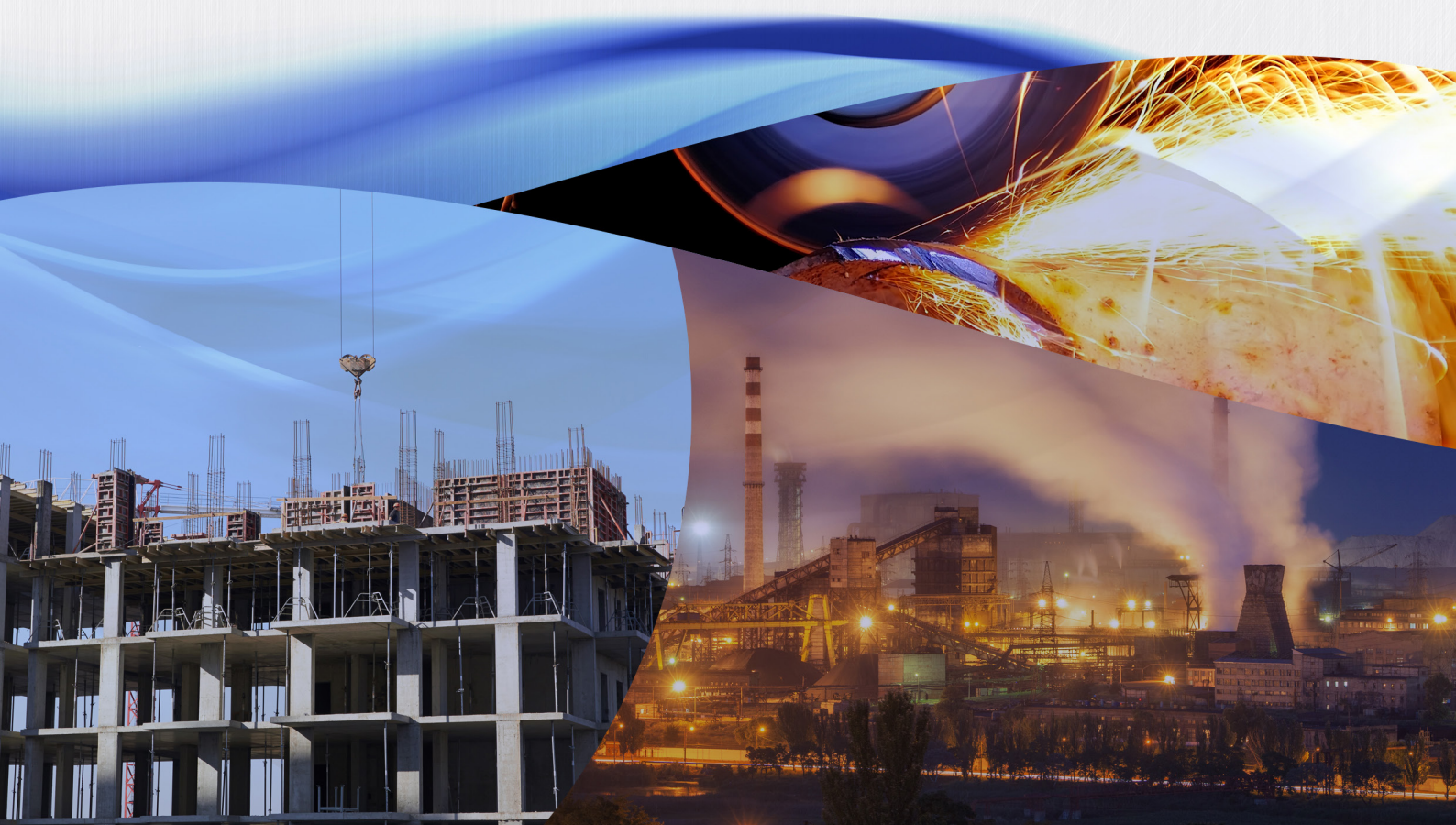


National Statistics Office of Georgia

RAPID ESTIMATES OF ECONOMIC GROWTH

**2018**

OCTOBER



30.11.2018

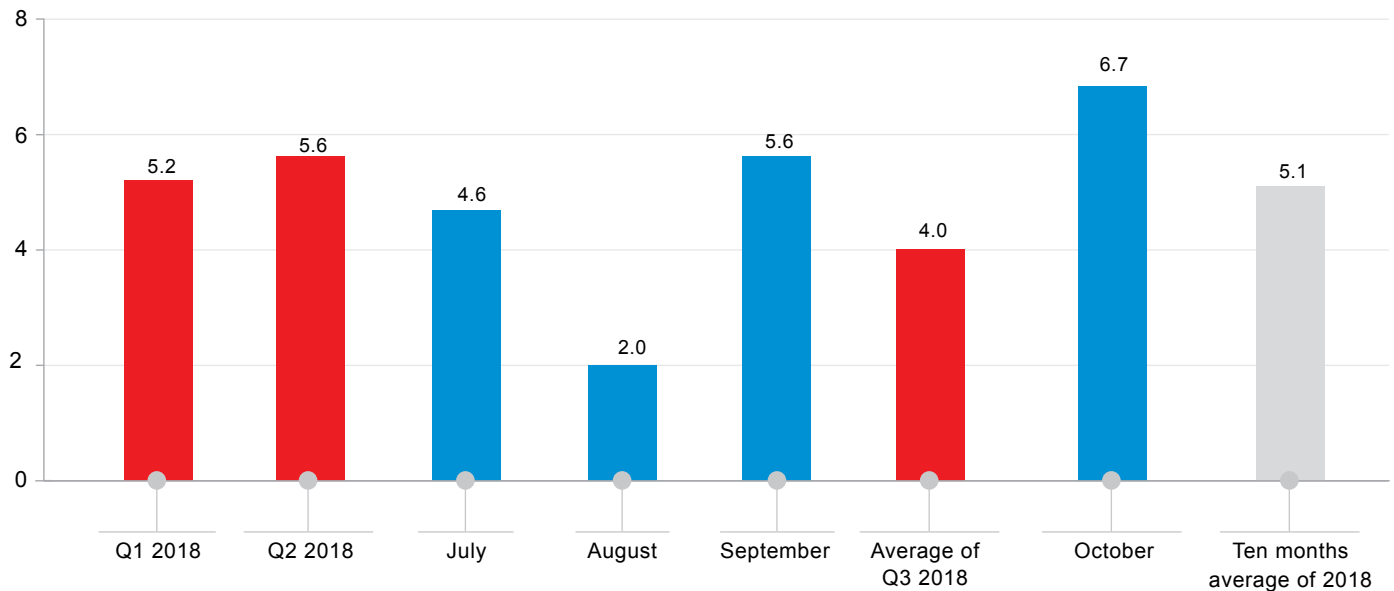
[www.geostat.ge](http://www.geostat.ge)

30.11.2018

**RAPID ESTIMATES OF ECONOMIC GROWTH, OCTOBER 2018**

The estimated real Gross Domestic Product (GDP) growth rate in October 2018 equaled 6.7 percent y-o-y. The estimated real GDP average growth for the first ten months of 2018 amounted to 5.1 percent y-o-y.

**RAPID ESTIMATIONS OF ECONOMIC GROWTH, 2018 Y-O-Y (%)**



In October 2018 the estimated real growth, compared to the same period of the previous year, was posted in the following activities: Manufacturing, Trade and Construction.

30.11.2018

MONTHLY ECONOMIC STATISTICS OCTOBER 2018

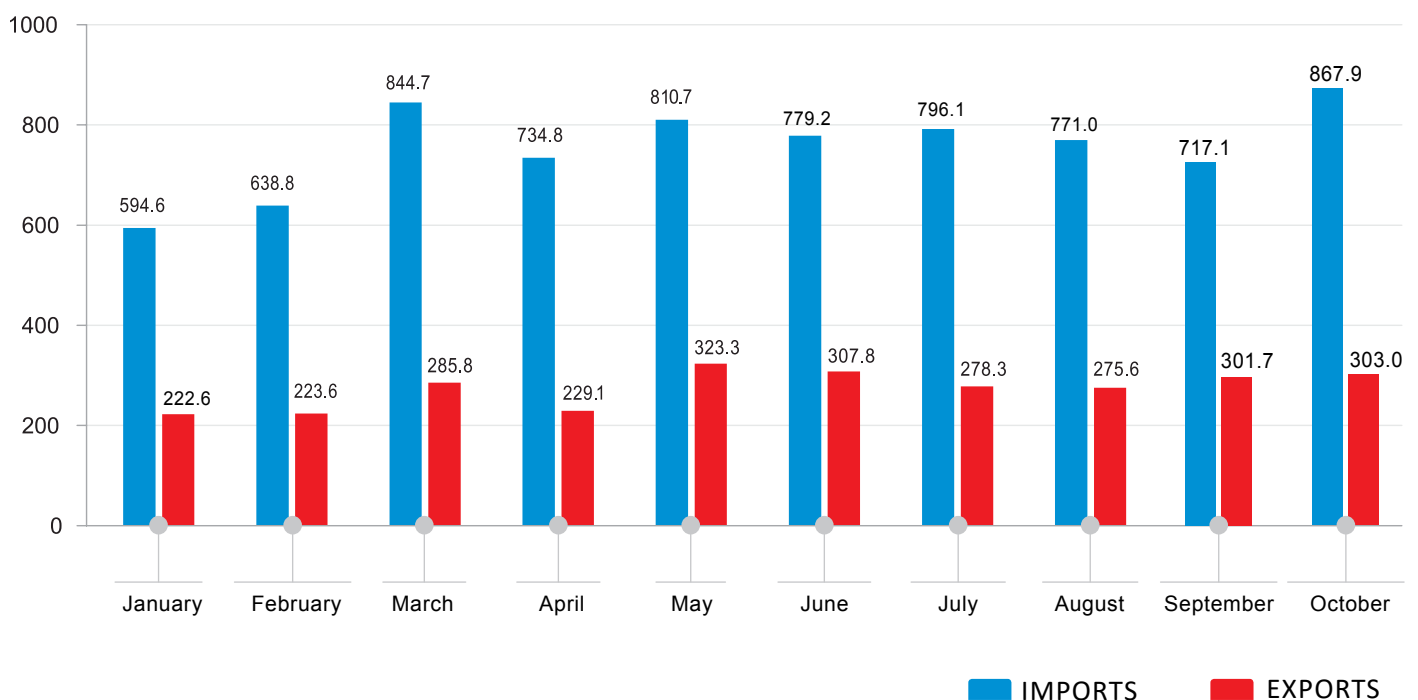
INDICATORS OF PRICE STATISTICS

INDICATOR	Y-O-Y	M-O-M
Consumer Price Index (CPI)	102.3	100.3
Producer Price Index (PPI) for industrial products	105.9	101.5

INDICATORS OF EXTERNAL MERCHANDISE TRADE STATISTICS IN JANUARY-OCTOBER, 2018

INDICATOR	MIL. US DOLLARS	CHANGE (Y-O-Y, %)
Exports of goods (FOB)	2 751.0	24.5
Imports of goods (CIF)	7 555.0	19.2
External merchandise trade turnover	10 305.9	20.5

EXTERNAL MERCHANDISE TRADE, 2018  
(MIL. US DOLLARS)

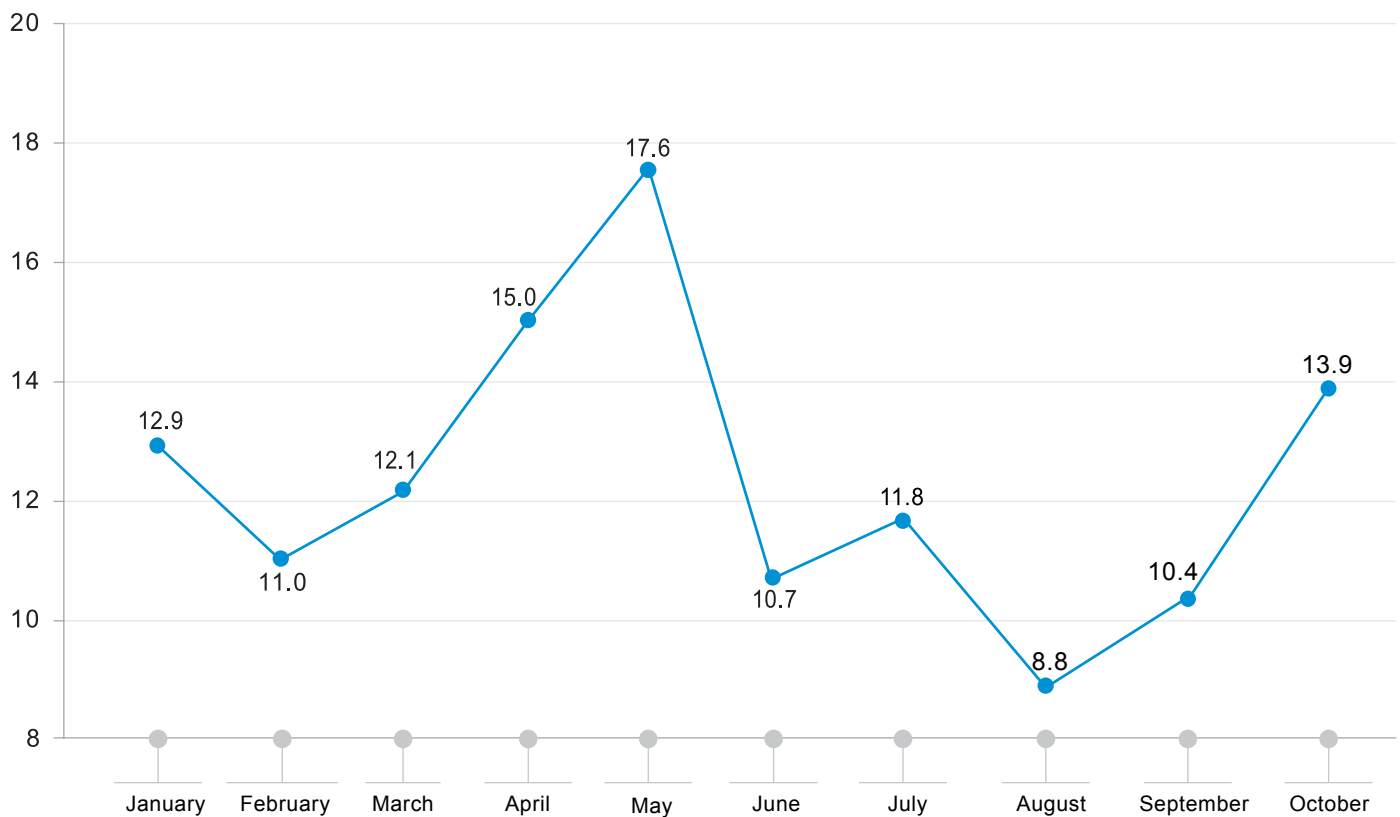


30.11.2018

INDICATORS OF BUSINESS STATISTICS

INDICATOR	OCTOBER
Number of currently registered enterprises (unit)	4 768
Change of currently registered enterprises number (y-o-y, %)	-12.8
Value Added Tax (VAT) payers' turnover used in rapid estimations of economic growth (mil. GEL)	6 603.8
Growth of VAT payers' turnover used in rapid estimations of economic growth (y-o-y, %)	13.9

CHANGE OF VAT PAYERS' TURNOVER USED IN RAPID ESTIMATIONS OF ECONOMIC GROWTH (Y-O-Y, %)

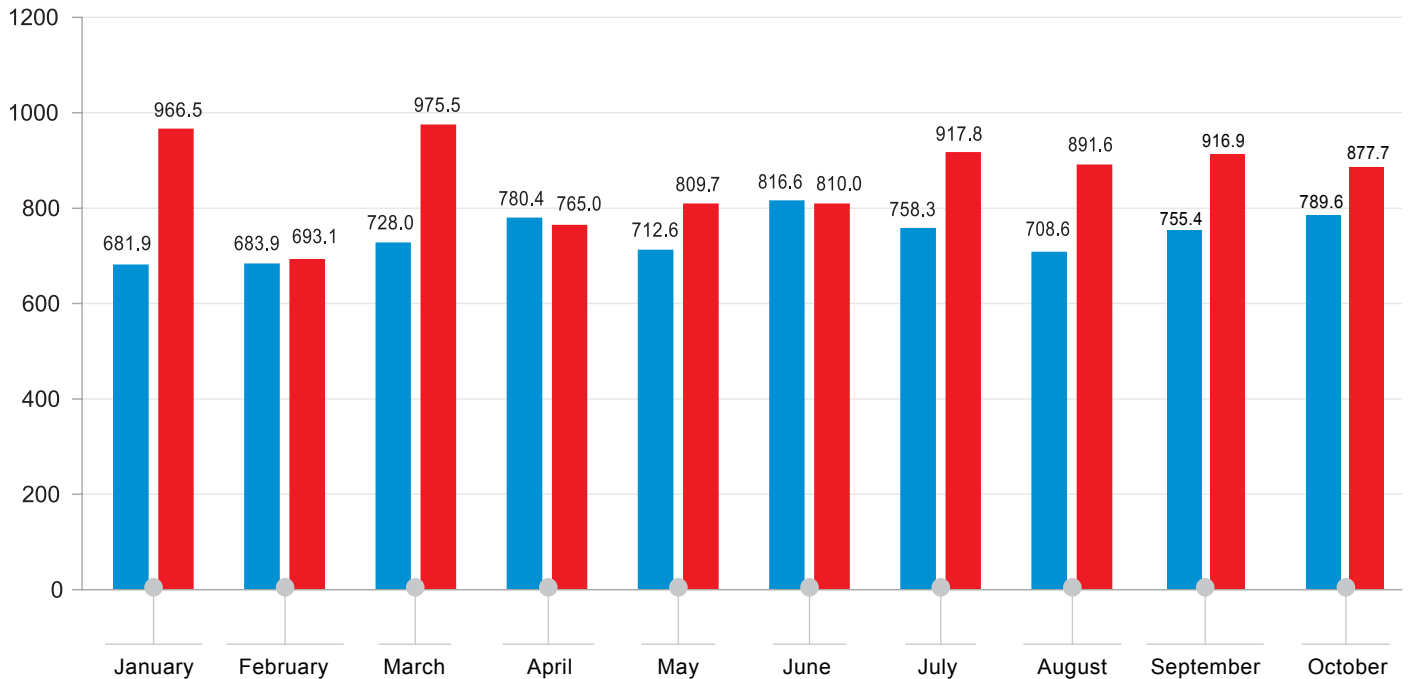


Source: Ministry of Finance of Georgia.

## NATIONAL STATISTICS OFFICE OF GEORGIA

30.11.2018

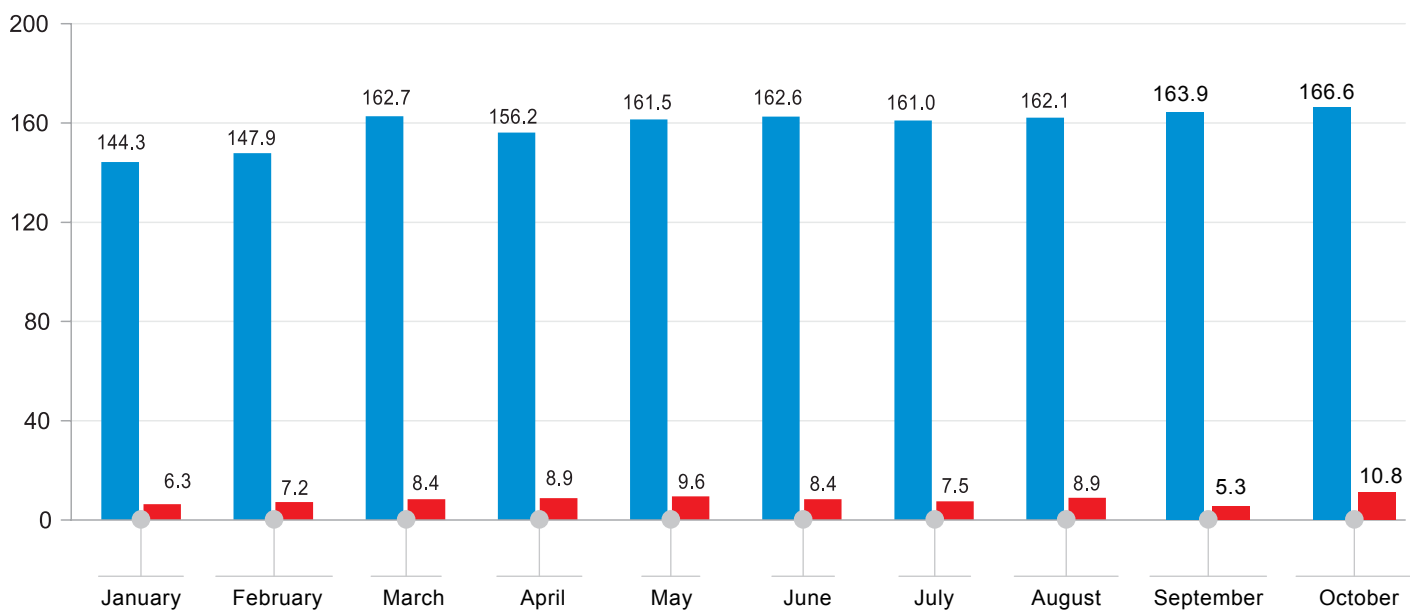
### INDICATORS OF STATE BUDGET, 2018 (MIL. GEL)



Source: Ministry of Finance of Georgia.

EXPENSE REVENUE

### OUTPUT OF BANKING SECTOR, 2018 (MIL. GEL)



Source: National Bank of Georgia.

COMMERCIAL BANKS NATIONAL BANK

30.11.2018

**INFORMATION NOTE**

Geostat produces monthly rapid estimations of real GDP growth rate using administrative data on VAT taxpayers' turnover, fiscal and monetary statistics. The compilation of rapid estimates is an internationally adopted practice to obtain preliminary monthly growth rate of real GDP. For those sectors, where preliminary monthly data do not exist (e.g. agriculture, non-observed economy etc.), the estimations are based on the data for previous periods.

Furthermore, the data on VAT taxpayers' turnover for the previous months might be updated on a monthly basis, resulting in corresponding adjustments of real GDP growth rate estimates.

**Contact persons:**

Levan Karsaulidze.

Tel.: (+995 32) 236 72 10 (302).

E-mail: [Lkarsaulidze@geostat.ge](mailto:Lkarsaulidze@geostat.ge); [info@geostat.ge](mailto:info@geostat.ge)

Mariam Kavelashvili.

Tel.: (+995 32) 236 72 10 (020).

E-mail: [mkavelashvili@geostat.ge](mailto:mkavelashvili@geostat.ge); [info@geostat.ge](mailto:info@geostat.ge)