

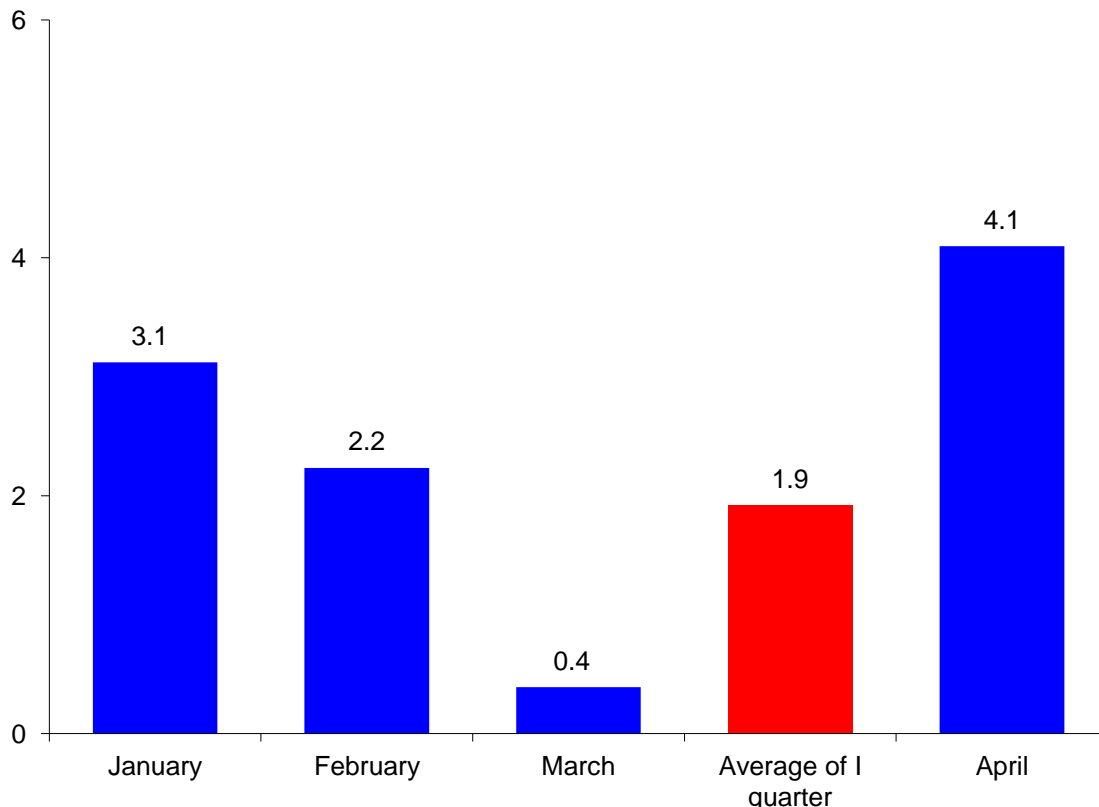
Rapid Estimates of Economic Growth, April 2013

The estimated real Gross Domestic Product (GDP) increased by 4.1 percent y-o-y in April 2013. The estimated real GDP growth in Q1 2013 equaled 1.9 percent.

The Geostat produces monthly rapid estimations of real GDP growth using administrative data on VAT taxpayers' turnover, fiscal and monetary statistics. The compilation of rapid estimates is an internationally adopted practice to obtain preliminary monthly growth of real GDP. For those sectors, where preliminary monthly data do not exist (e.g. agriculture, non-observed economy etc.), the estimations are based on the data for previous periods. Therefore, the actual quarterly real GDP growth may significantly differ from monthly rapid estimates.

Furthermore, the data on VAT taxpayers' turnover for the previous months might be updated on a monthly basis, implying corresponding adjustments of real GDP growth estimates.

Rapid estimations of economic growth (%)



Monthly Economic Statistics

April 2013

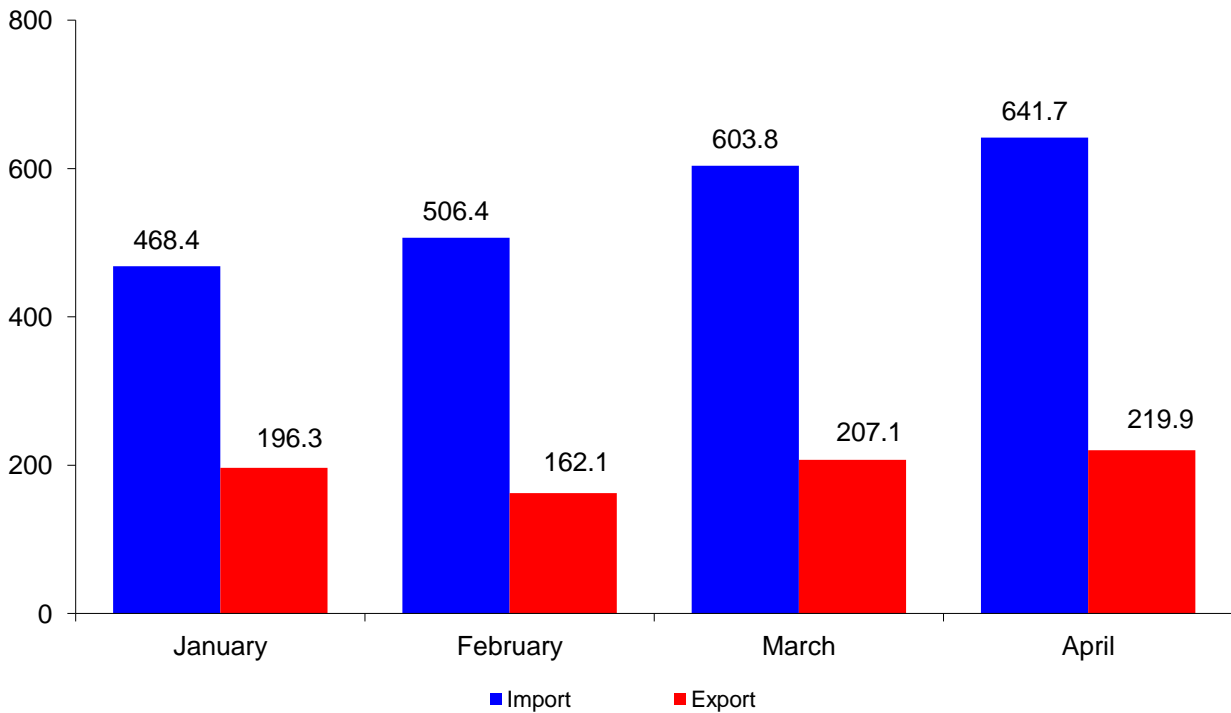
Indicators of price statistics

Indicator	Y-o-Y	M-o-M
Consumer Price Index (CPI)	98.3	100.4
Producer Price Index (PPI) on the industrial goods	99.2	99.2

Indicators of external merchandise trade statistics in January-April, 2013

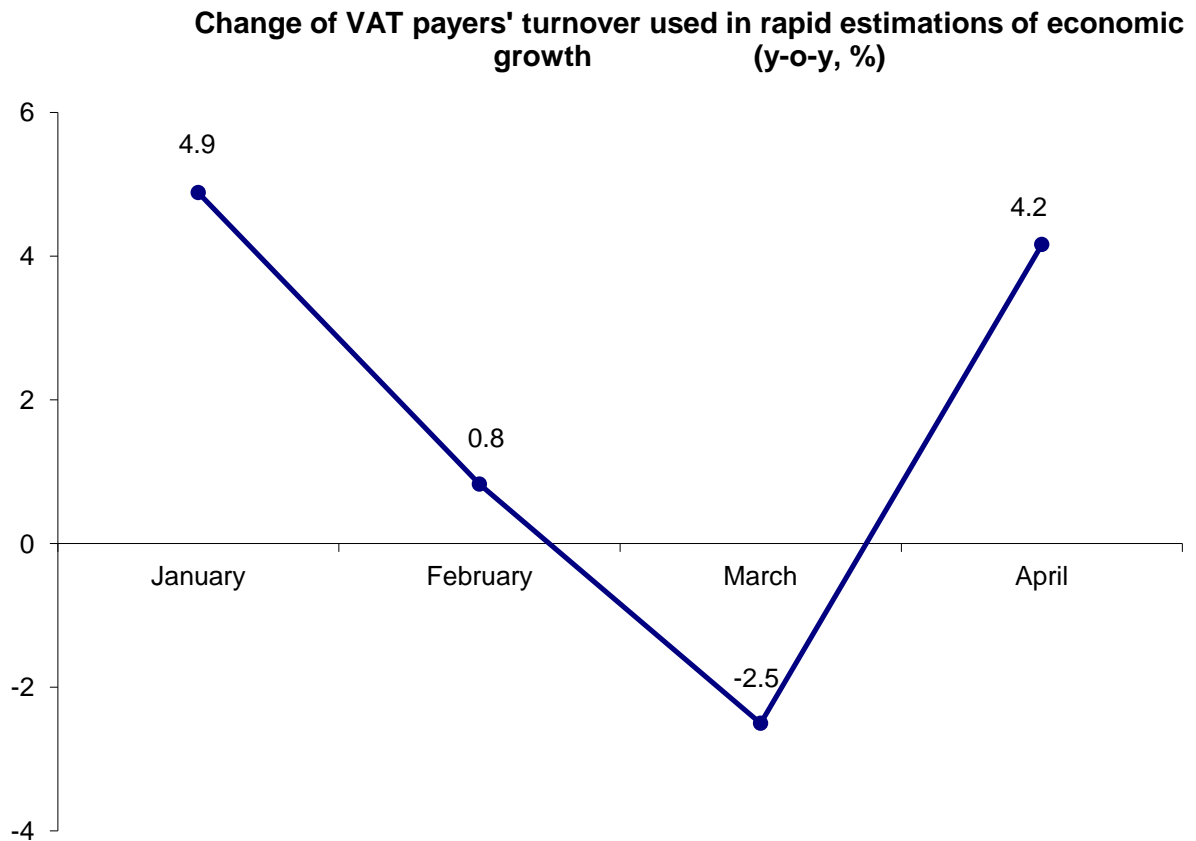
Indicator	Mil. US dollars	Change (y-o-y, %)
Exports of goods (FOB)	785.4	8.4
Imports of goods (CIF)	2 220.3	-8.1
External merchandise trade turnover	3 005.8	-4.3

External merchandise trade (mil. US dollars)



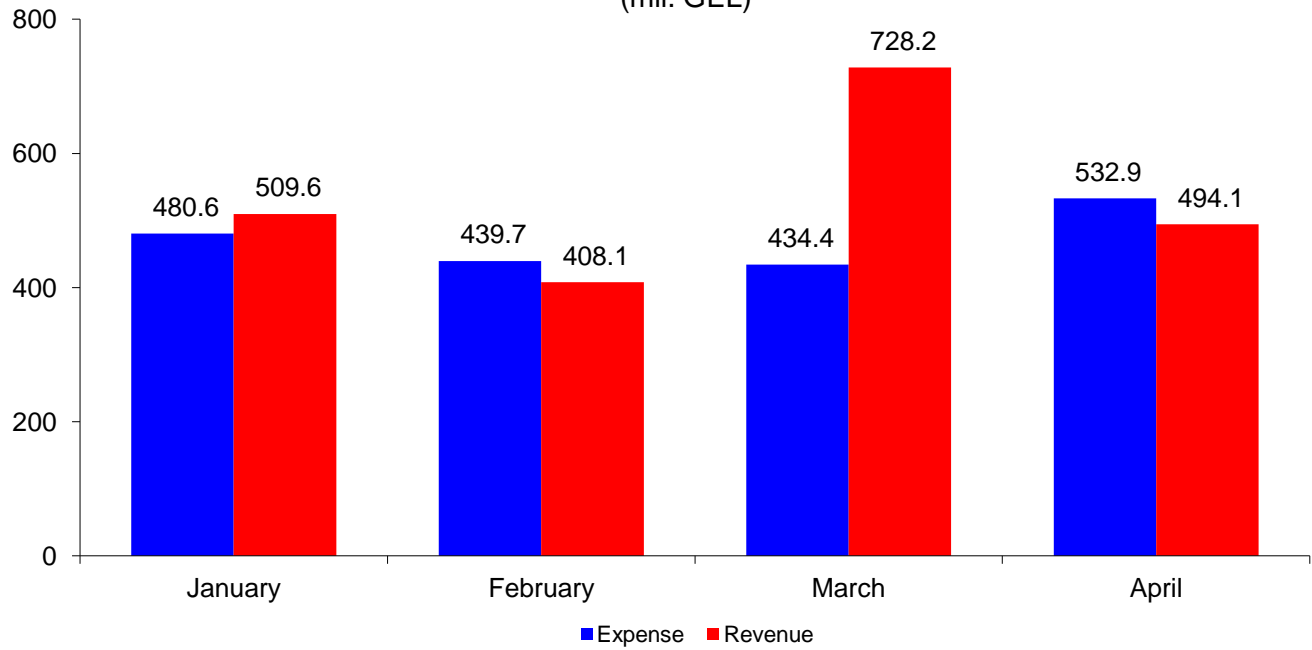
Indicators of business statistics

	April
Number of currently registered enterprises (unit)	4 662
Change of currently registered enterprises number (y-o-y,%)	16.9
Value Added Tax (VAT) payers' turnover used in rapid estimations of economic growth (mil. GEL)	3 598.7
Change of VAT payers' turnover used in rapid estimations of economic growth (y-o-y, %)	4.2



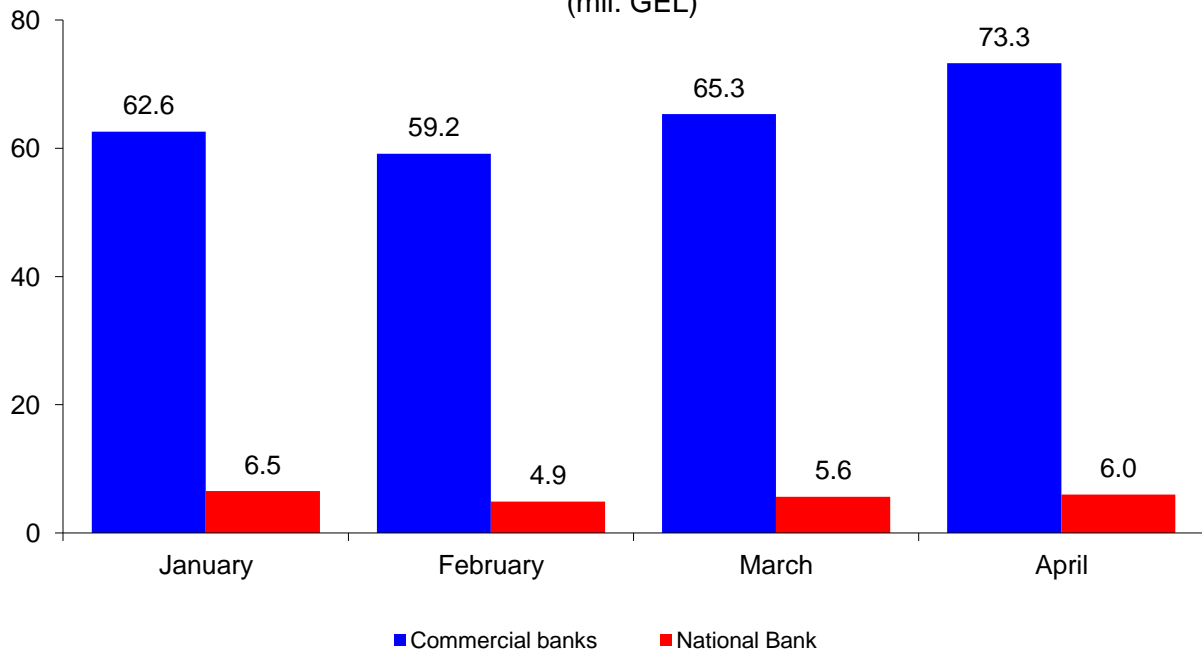
Source: Ministry of Finance of Georgia

Indicators of central government budget
(mil. GEL)



Source: Ministry of Finance of Georgia

Output of banking sector
(mil. GEL)



Source: National Bank of Georgia.

Note: Preliminary data subject to revisions.

Contact persons: Levan Gogoberishvili, Tel.: (+995 32) 236 72 10 (302). E-mail: lgogoberishvili@geostat.ge
info@geostat.ge
 Mariam Kavelashvili, Tel.: (+995 32) 236 72 10 (020). E-mail: mkavelashvili@geostat.ge
info@geostat.ge