

## Rapid Estimates of Economic Growth December 2014

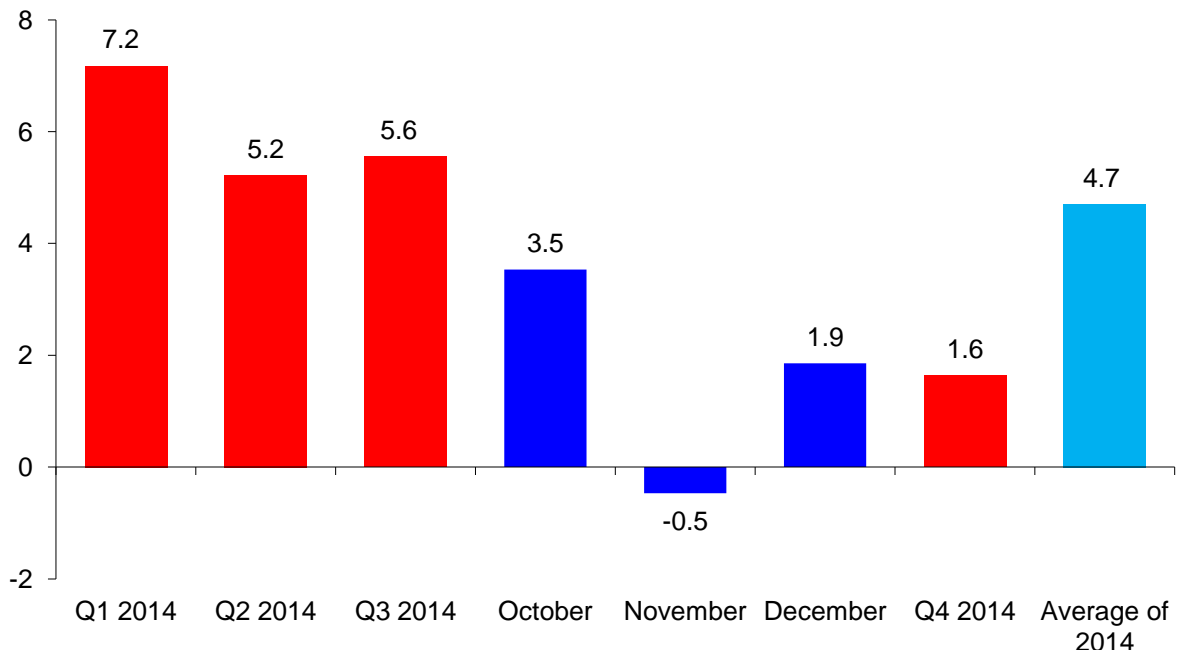
The estimated real Gross Domestic Product (GDP) growth rate amounted to 1.9 percent y-o-y in December 2014. The estimated real GDP growth reached 1.6 percent for Q4 2014 y-o-y.

The estimated annual growth of real GDP equaled 4.7 percent in 2014.

Geostat produces monthly rapid estimations of real GDP growth using administrative data on VAT taxpayers' turnover, fiscal and monetary statistics. The compilation of rapid estimates is an internationally adopted practice to obtain preliminary monthly growth of real GDP. For those sectors, where preliminary monthly data do not exist (e.g. agriculture, non-observed economy etc.), the estimations are based on the data for previous periods. Therefore, the actual quarterly real GDP growth may differ from monthly rapid estimates.

Furthermore, the data on VAT taxpayers' turnover for the previous months might be updated on a monthly basis, implying corresponding adjustments of real GDP growth estimates.

**Rapid estimations of economic growth (%)**



# Monthly Economic Statistics

December 2014

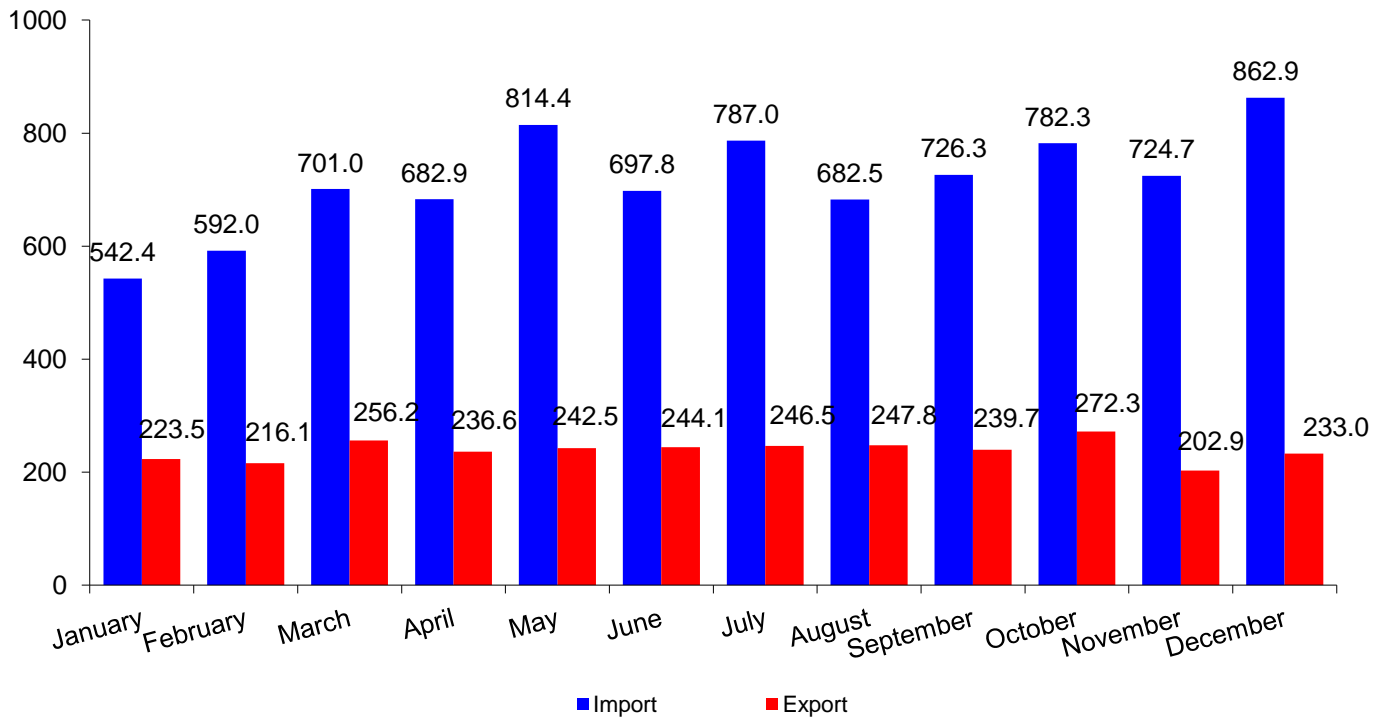
## Indicators of price statistics

Indicator	Y-o-Y	M-o-M
Consumer Price Index (CPI)	102.0	100.7
Producer Price Index (PPI) on the industrial goods	106.4	102.4

## Indicators of external merchandise trade statistics in January-December, 2014

Indicator	Mil. US dollars	Change (y-o-y, %)
Exports of goods (FOB)	2 861.2	-1.6
Imports of goods (CIF)	8 596.3	7.1
External merchandise trade turnover	11 457.5	4.8

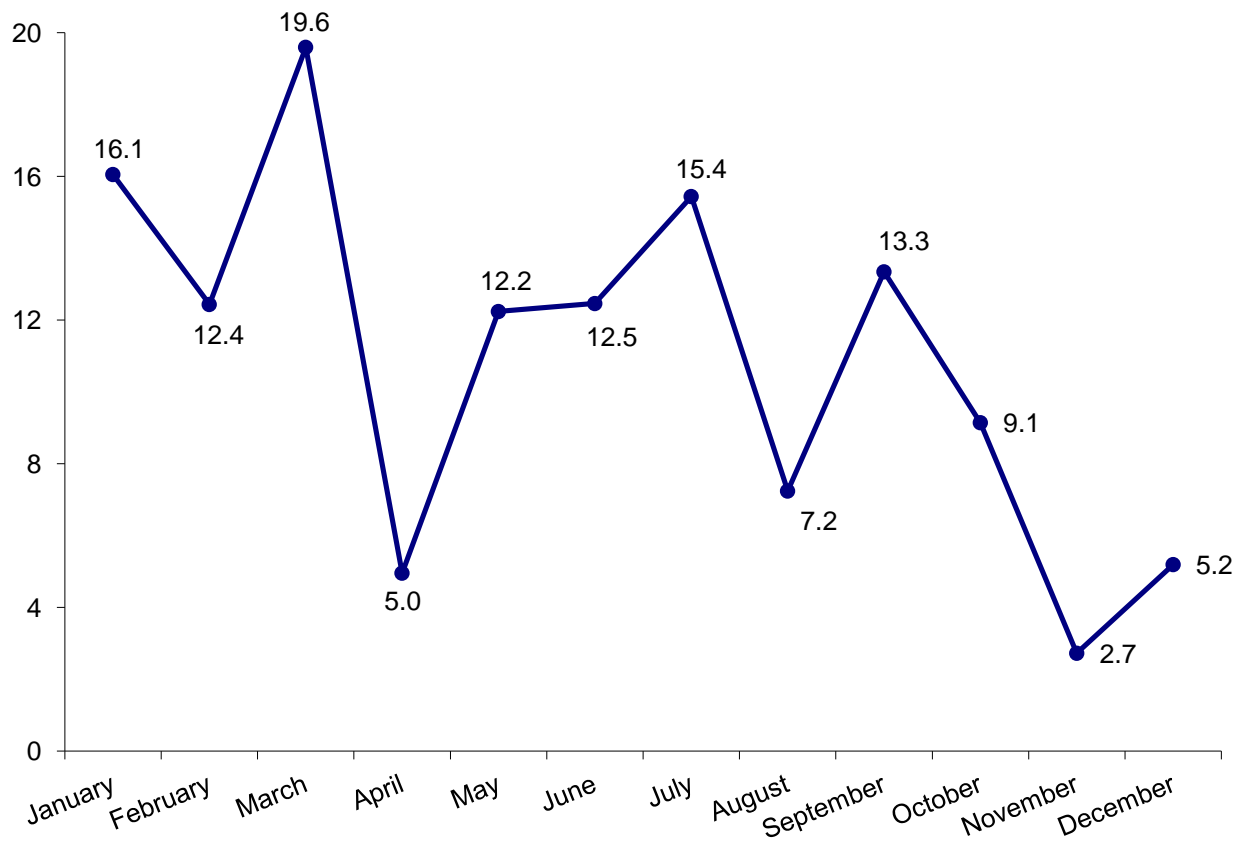
## External merchandise trade (mil. US dollars)



## Indicators of business statistics

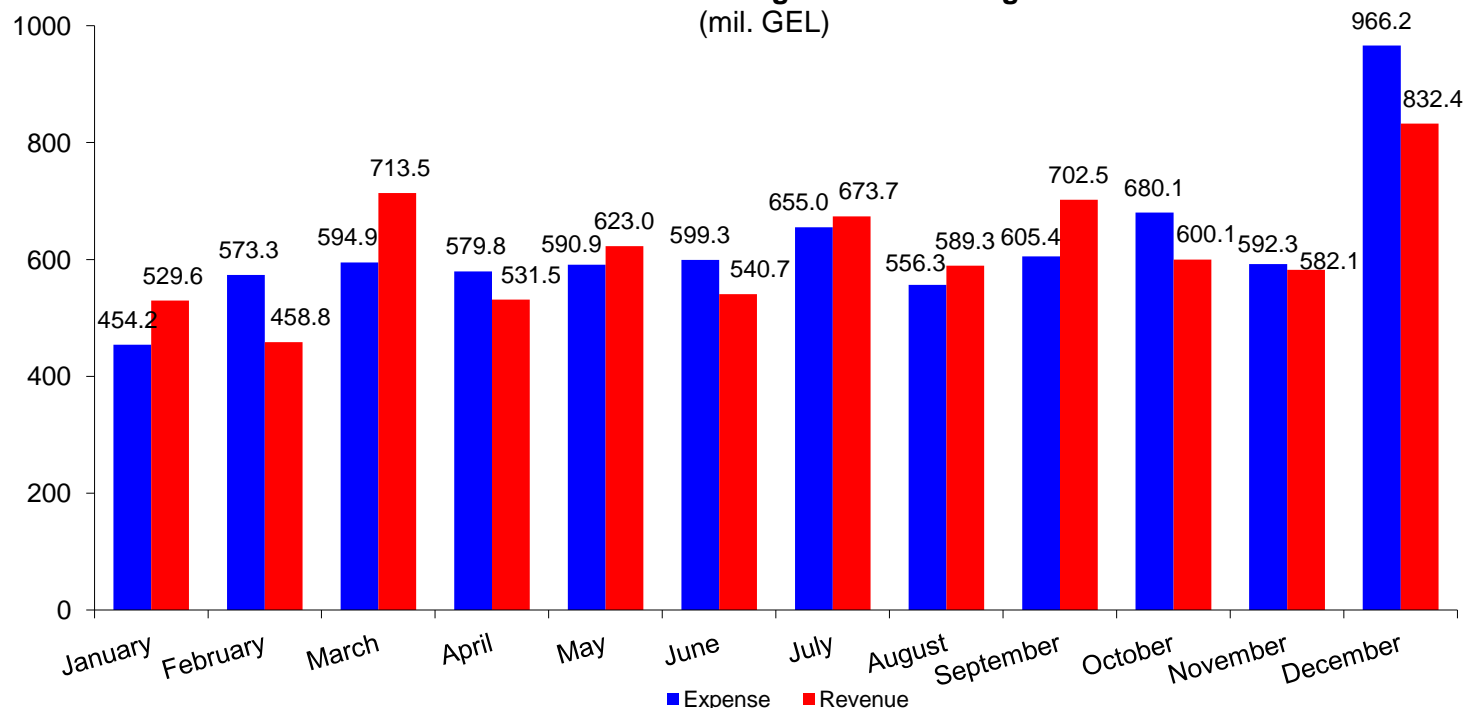
	December
Number of currently registered enterprises (unit)	3 612
Change of currently registered enterprises number (y-o-y,%)	13.2
Value Added Tax (VAT) payers' turnover used in rapid estimations of economic growth, December (mil. GEL)	5 202.8
Growth of VAT payers' turnover used in rapid estimations of economic growth (y-o-y, %)	5.2

**Change of VAT payers' turnover used in rapid estimations of economic growth (y-o-y, %)**



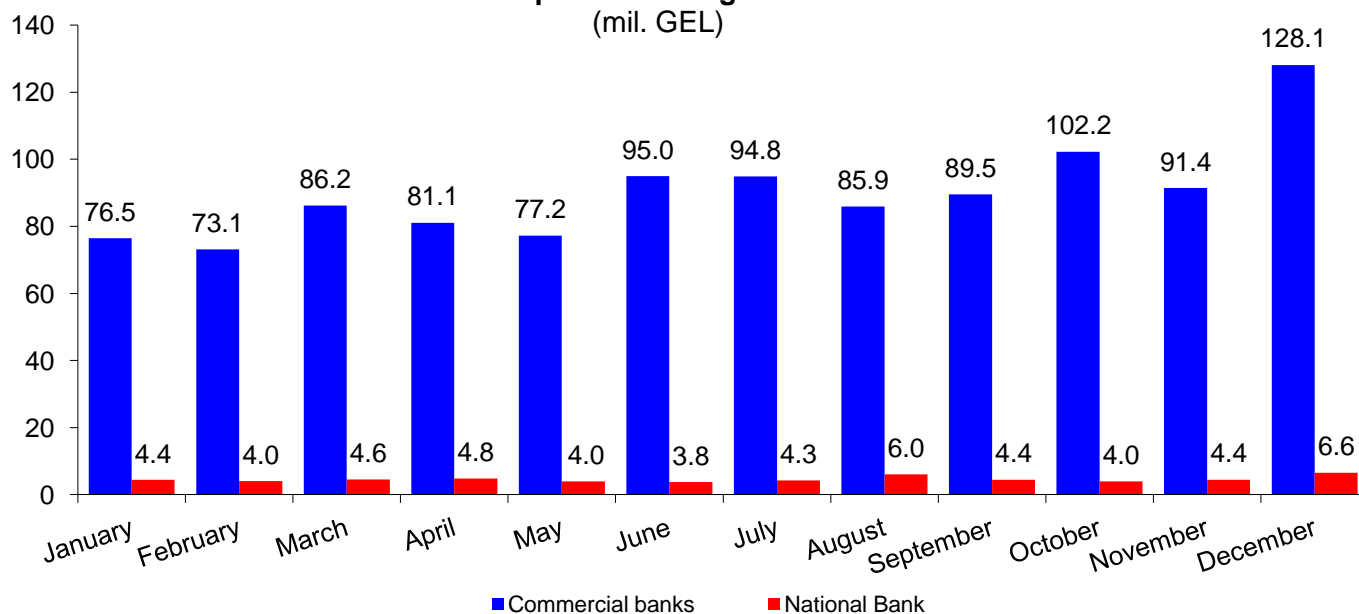
Source: Ministry of Finance of Georgia.

### Indicators of central government budget (mil. GEL)



Source: Ministry of Finance of Georgia.

### Output of banking sector (mil. GEL)



Source: National Bank of Georgia.

**Note:** Preliminary data subject to revisions.

**Contact persons:** Levan Gogoberishvili, Tel.: (+995 32) 236 72 10 (302). E-mail: [lgogoberishvili@geostat.ge](mailto:lgogoberishvili@geostat.ge)  
[info@geostat.ge](mailto:info@geostat.ge)  
 Mariam Kavelashvili, Tel.: (+995 32) 236 72 10 (020). E-mail: [mkavelashvili@geostat.ge](mailto:mkavelashvili@geostat.ge)  
[info@geostat.ge](mailto:info@geostat.ge)