



National Statistics Office of Georgia

**GROSS DOMESTIC PRODUCT
OF GEORGIA
2021
I QUARTER
(PRELIMINARY)**

18.06.2021

www.geostat.ge

NATIONAL STATISTICS OFFICE OF GEORGIA

18.06.2021

GROSS DOMESTIC PRODUCT OF GEORGIA I QUARTER, 2021 (PRELIMINARY)

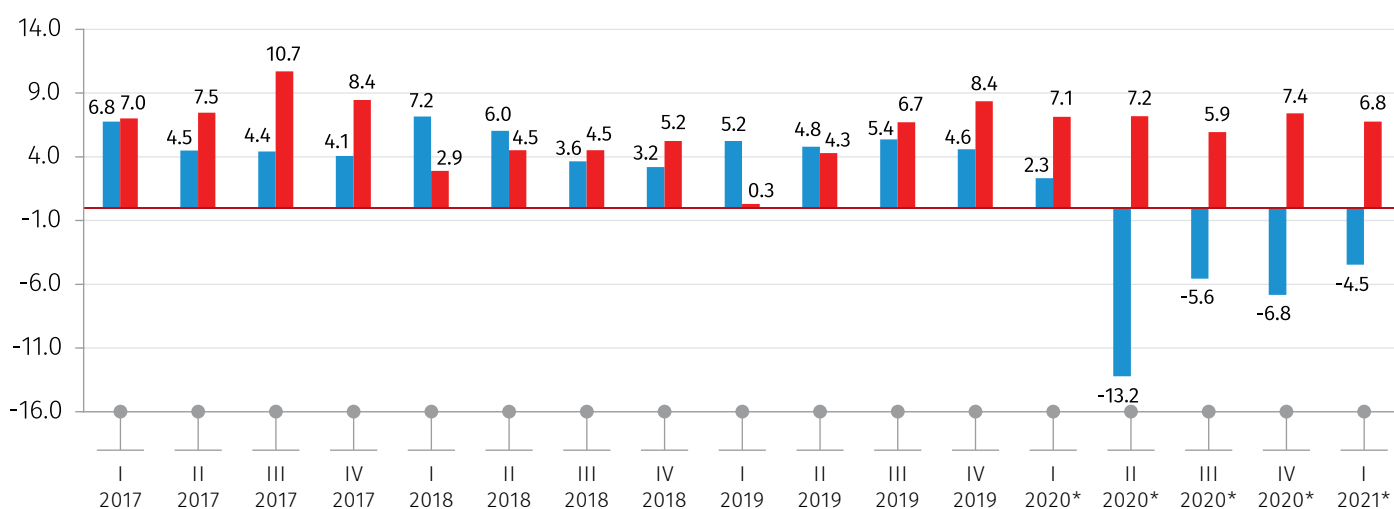
In Q1 2021 the nominal GDP amounted to GEL 11 275.7 million. The real Gross Domestic Product (GDP) declined by 4.5 percent YoY, while the GDP deflator increased by 6.8 percent.

TABLE №1

	Q1. 2020*	Q1. 2021*
GDP at current prices (mil. GEL)	11 055.0	11 275.7
GDP per capita (GEL)	2 974.3	3 024.1
GDP at current prices (mil. US Dollars)	3 777.3	3 402.3
GDP per capita (US Dollars)	1 016.3	912.5
Real GDP growth rate (%)	2.3	-4.5
GDP deflator percentage change (%)	7.1	6.8

*Preliminary data.

REAL GDP GROWTH AND DEFLATOR PERCENTAGE CHANGE COMPARED TO THE SAME QUARTER OF PREVIOUS YEAR (PERCENT)



* Preliminary data.

REAL GDP GROWTH

GDP DEFLATOR

18.06.2021

TABLE №2

GROSS DOMESTIC PRODUCT
(AT CURRENT PRICES, MIL. GEL)

ECONOMIC ACTIVITIES	Q1 2020*	Q1 2021*
Agriculture, forestry and fishing	646.8	656.2
Mining and quarrying	150.6	207.4
Manufacturing	928.6	1 051.5
Electricity, gas, steam and air conditioning supply	268.7	304.8
Water supply; sewerage, waste management and remediation activities	75.8	87.3
Construction	640.6	677.7
Wholesale and retail trade; repair of motor vehicles and motorcycles	1 323.1	1 476.4
Transportation and storage	618.3	578.8
Accommodation and food service activities	427.2	187.9
Information and communication	307.0	360.1
Financial and insurance activities	495.6	611.2
Real estate activities	1 272.9	1 163.3
Professional, scientific and technical activities	220.3	227.2
Administrative and support service activities	128.1	85.2
Public administration and defence; compulsory social security	773.8	821.4
Education	495.6	475.4
Human health and social work activities	473.3	543.2
Arts, entertainment and recreation	384.9	300.2
Other service activities	92.9	61.6
Activities of households as employers; undifferentiated goods and services producing activities of household for own use	11.0	18.0
GDP AT BASIC PRICES	9 735.1	9 894.7
Taxes on products	1 371.6	1 435.2
Subsidies on products	51.7	54.2
GDP AT MARKET PRICES	11 055.0	11 275.7

* Preliminary data.

Note: Individual figures may not sum up to the total due to rounding.

18.06.2021

TABLE №3

REAL GDP GROWTH RATES COMPARED TO THE SAME PERIOD OF THE PREVIOUS YEAR

ECONOMIC ACTIVITIES	Q1 2020*	Q1 2021*
Agriculture, forestry and fishing	3.4	3.4
Mining and quarrying	6.2	50.3
Manufacturing	13.2	-2.6
Electricity, gas, steam and air conditioning supply	-8.1	-9.8
Water supply; sewerage, waste management and remediation activities	-2.1	28.8
Construction	7.5	-19.4
Wholesale and retail trade; repair of motor vehicles and motorcycles	0.3	3.9
Transportation and storage	-3.7	-9.0
Accommodation and food service activities	5.4	-54.0
Information and communication	5.4	16.8
Financial and insurance activities	-8.3	24.0
Real estate activities	3.0	-6.4
Professional, scientific and technical activities	-17.5	-0.2
Administrative and support service activities	-3.1	-34.0
Public administration and defence; compulsory social security	5.3	1.8
Education	3.1	-5.6
Human health and social work activities	9.7	13.3
Arts, entertainment and recreation	16.0	-25.4
Other service activities	18.0	-36.5
Activities of households as employers; undifferentiated goods and services producing activities of household for own use	-34.1	60.7
GDP AT BASIC PRICES	3.0	-3.3
Taxes on products	-2.7	-12.6
Subsidies on products	0.3	1.0
GDP AT MARKET PRICES	2.3	-4.5
GDP deflator percentage change	7.1	6.8

* Preliminary data.

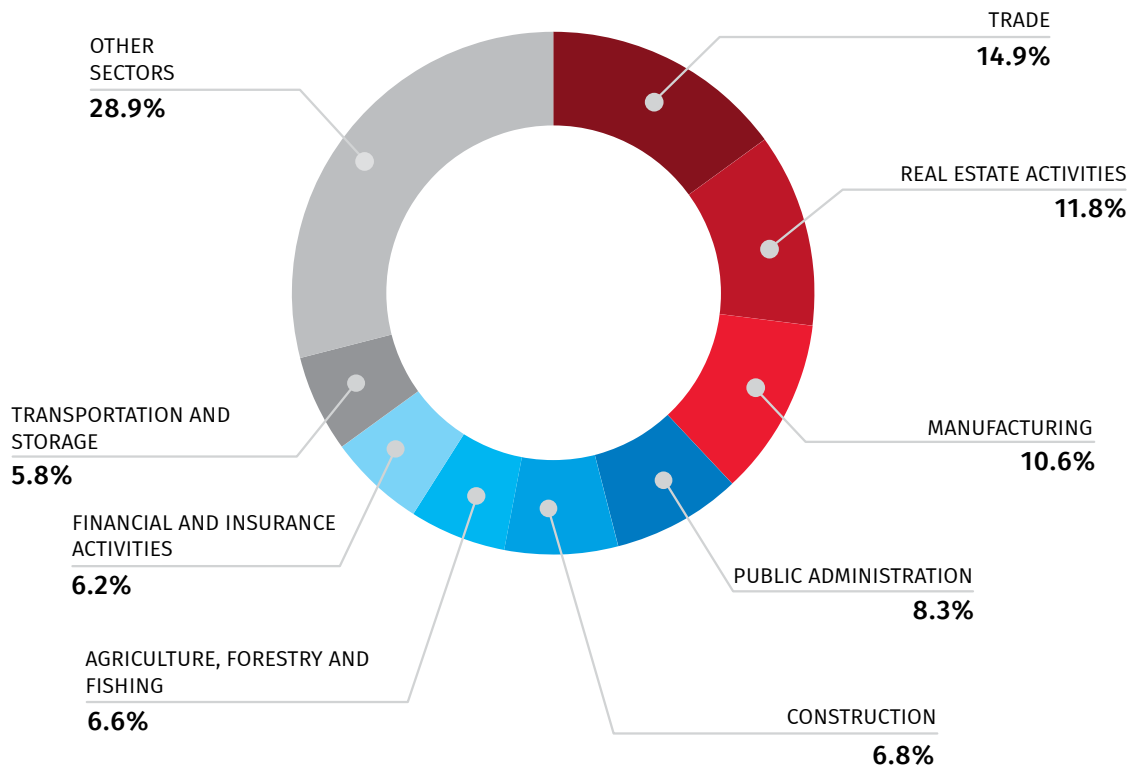
NATIONAL STATISTICS OFFICE OF GEORGIA

18.06.2021

Significant contributions to the real GDP reduction in Q1 2021 is related to decrease in the value-added of the following activities: Accommodation and food service activities (-54.0 percent), Construction (-19.4 percent), Arts, entertainment and recreation (-25.4 percent), Real estate activities (-6.4 percent), Transportation and storage (-9.0 percent), Administrative and support service activities (-34.0 percent).

Real growth was posted in Financial and insurance activities (24.0 percent), Mining and quarrying (50.3 percent), Human health and social work activities (13.3 percent), Wholesale and retail trade; repair of motor vehicles and motorcycles (3.9 percent), Information and communication (16.8 percent).

GDP STRUCTURE IN Q1 2021*



* Preliminary data.

Note: Individual figures may not sum up to the total due to rounding.

18.06.2021

The largest shares of GDP by activity are held by Trade (14.9 percent), Real estate activities (11.8 percent), followed by Manufacturing (10.6 percent), Public administration (8.3 percent), Construction (6.8 percent), Agriculture, forestry and fishing (6.6 percent), Financial and insurance activities (6.2 percent), Transportation and storage (5.8 percent).

Note: Revised data will be published by November 15, 2021.

INFORMATION NOTE

Calculation of the quarterly Gross Domestic Product is based on a monthly and quarterly data. The data of annual surveys usually differ from the quarterly data. Therefore, arises necessity of adjusting the quarterly GDP taking into account annual survey results.

After receiving the annual survey results for the previous year, four quarters of the previous year are adjusted along with the first and the second quarters of the current year. Final revision of 2020 quarters data will be conducted in November 2021, after receiving the data of annual surveys for 2020.

CONTACT PERSONS:

Levan Karsaulidze, Tel.: (+995 32) 236 72 10 (302)

E-mail: Lkarsaulidze@geostat.ge; info@geostat.ge

Mariam Kavelashvili, Tel.: (+995 32) 236 72 10 (020)

E-mail: mkavelashvili@geostat.ge; info@geostat.ge