

EXTERNAL MERCHANDISE TRADE

2023 JANUARY-FEBRUARY (PRELIMINARY)

CHANGE TO THE SAME PERIOD OF 2022



EXPORT

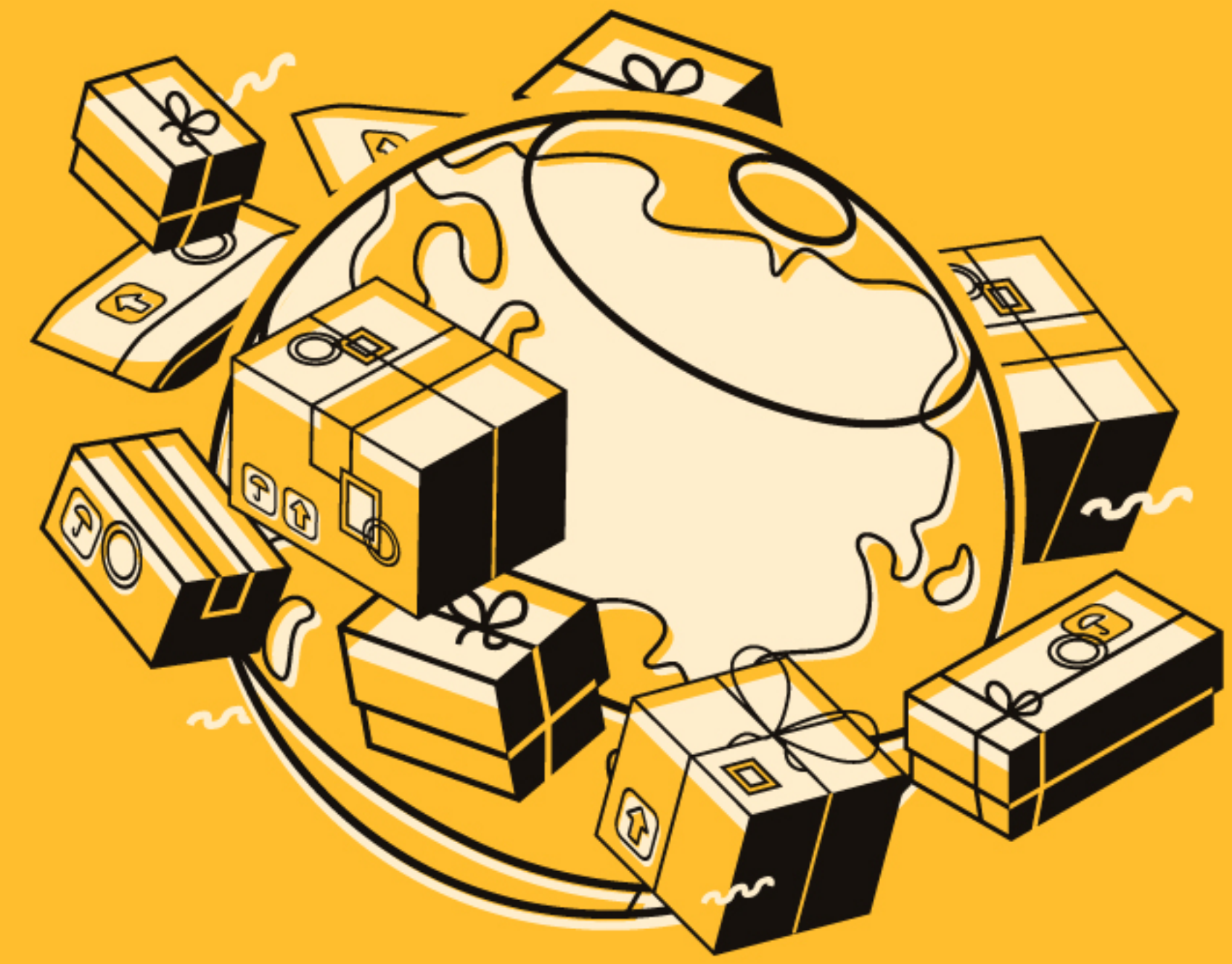
\$ 914.8 MILL.

+20.3%

IMPORT

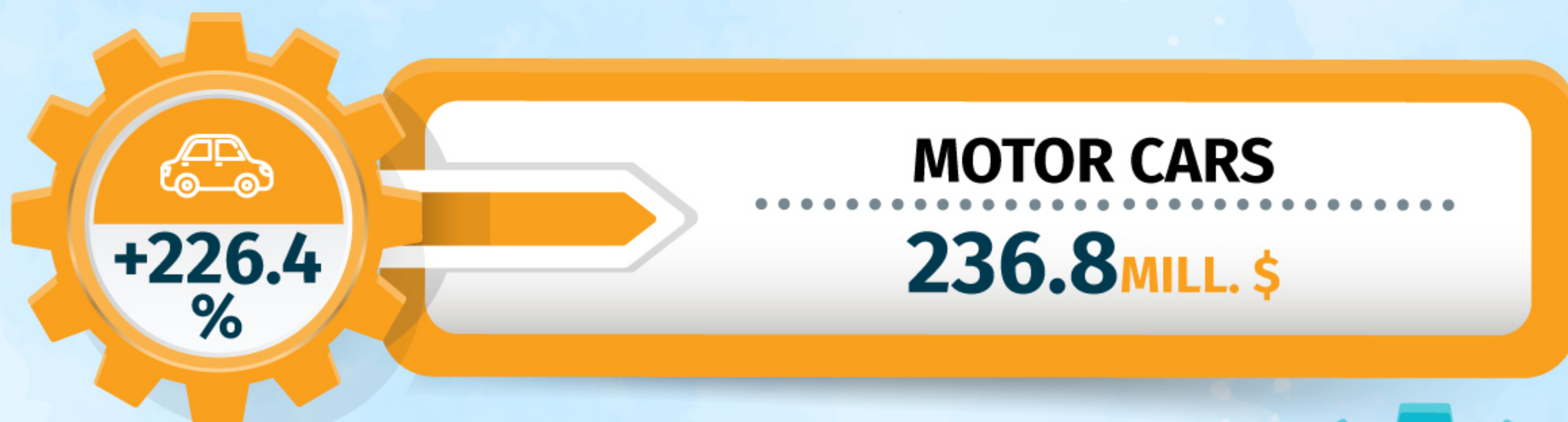
\$ 1 983.4 MILL.

+9.0%



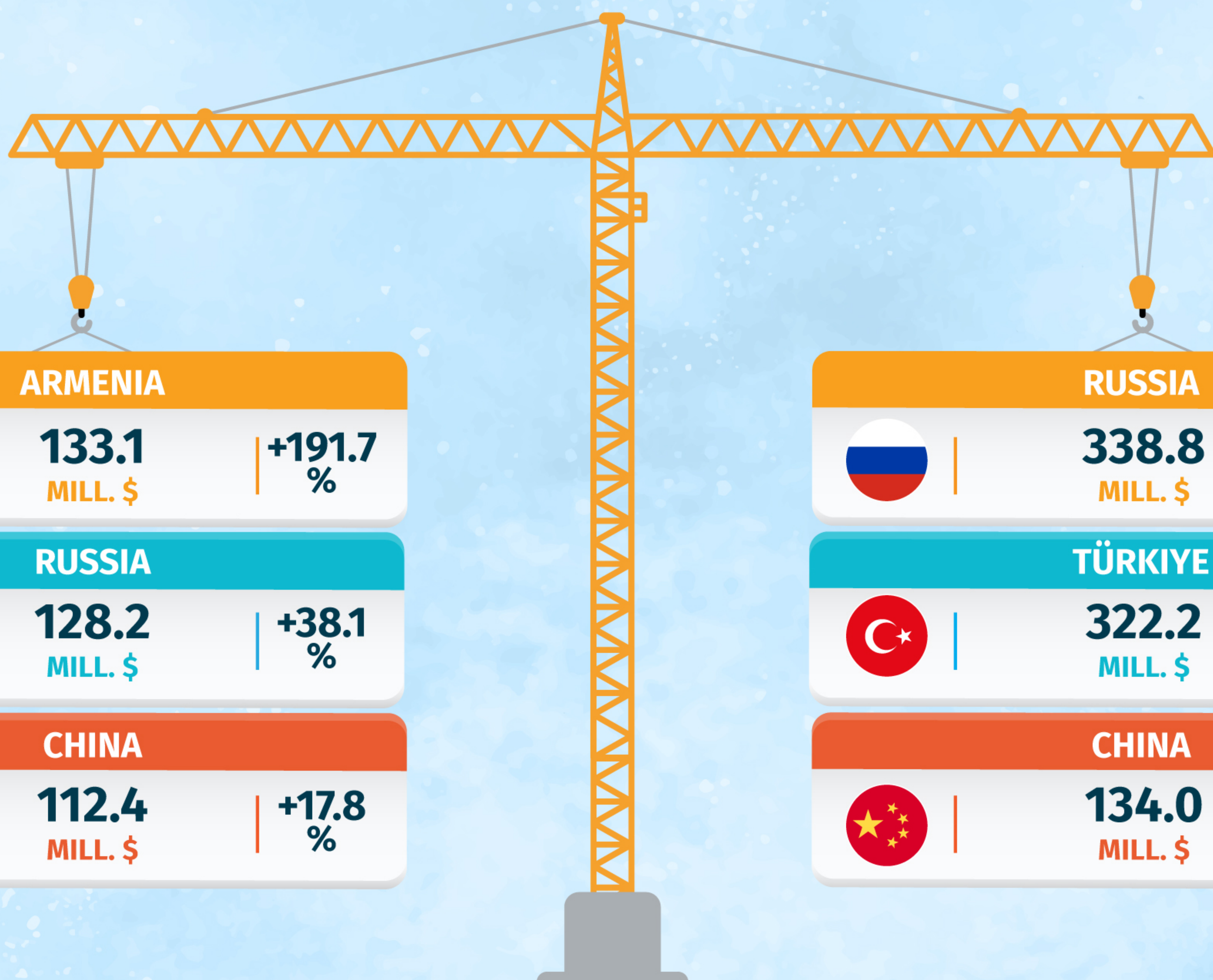
TOP 3 PRODUCTS BY EXPORTS

TOP 3 PRODUCTS BY IMPORTS



TOP 3 PARTNERS BY EXPORTS

TOP 3 PARTNERS BY IMPORTS



Country	Value (MILL. \$)	Change (%)
ARMENIA	133.1	+191.7%
RUSSIA	128.2	+38.1%
CHINA	112.4	+17.8%

Country	Value (MILL. \$)	Change (%)
RUSSIA	338.8	+86.3%
TÜRKIYE	322.2	+8.6%
CHINA	134.0	-6.3%