

# EXTERNAL MERCHANDISE TRADE

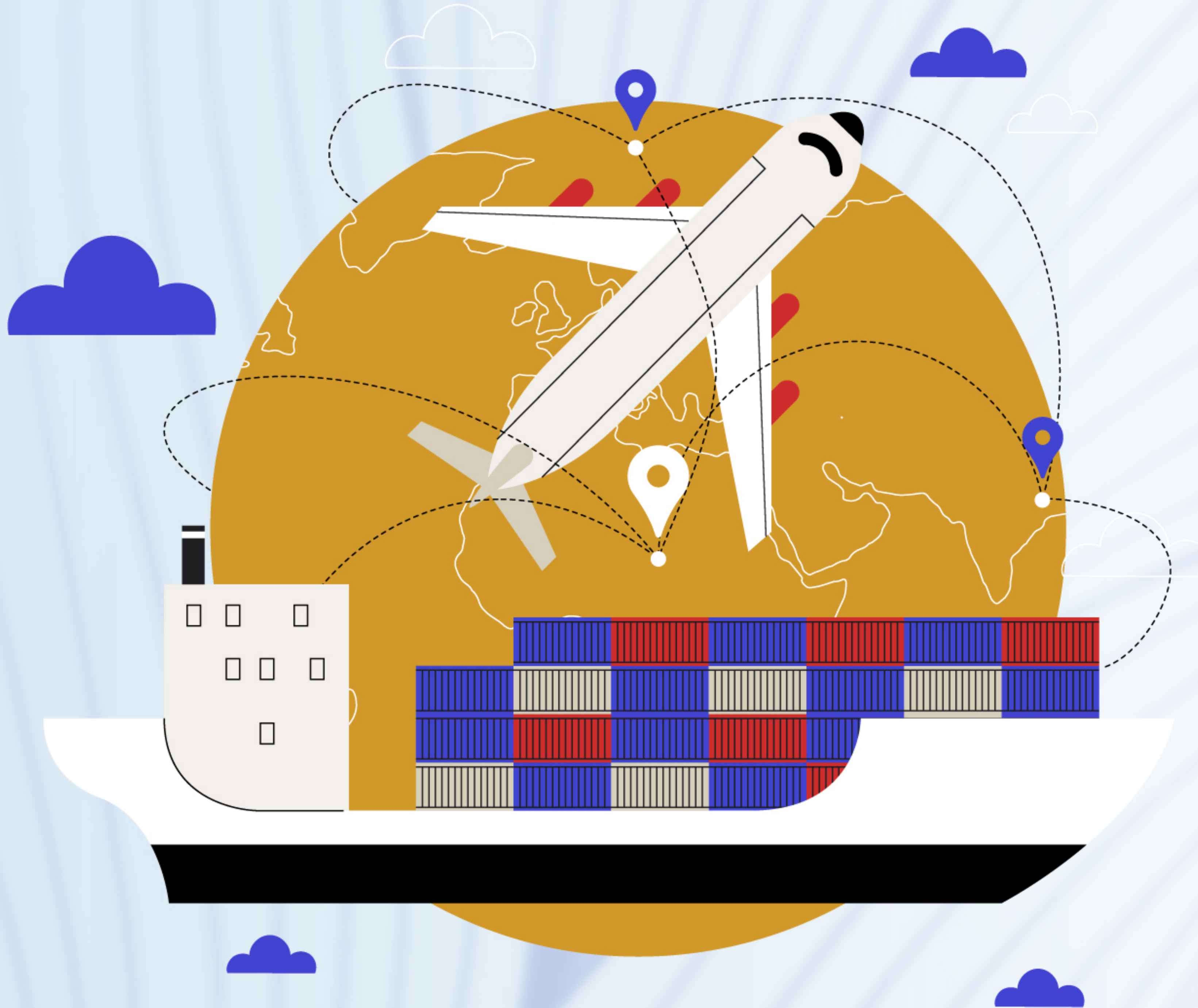
JANUARY-OCTOBER 2023 (PRELIMINARY)

CHANGE TO THE SAME PERIOD OF 2022

## EXPORT

\$ 12 683.1 MILL.

+17.8%



## IMPORT

\$ 5 102.3 MILL.

+12.5%

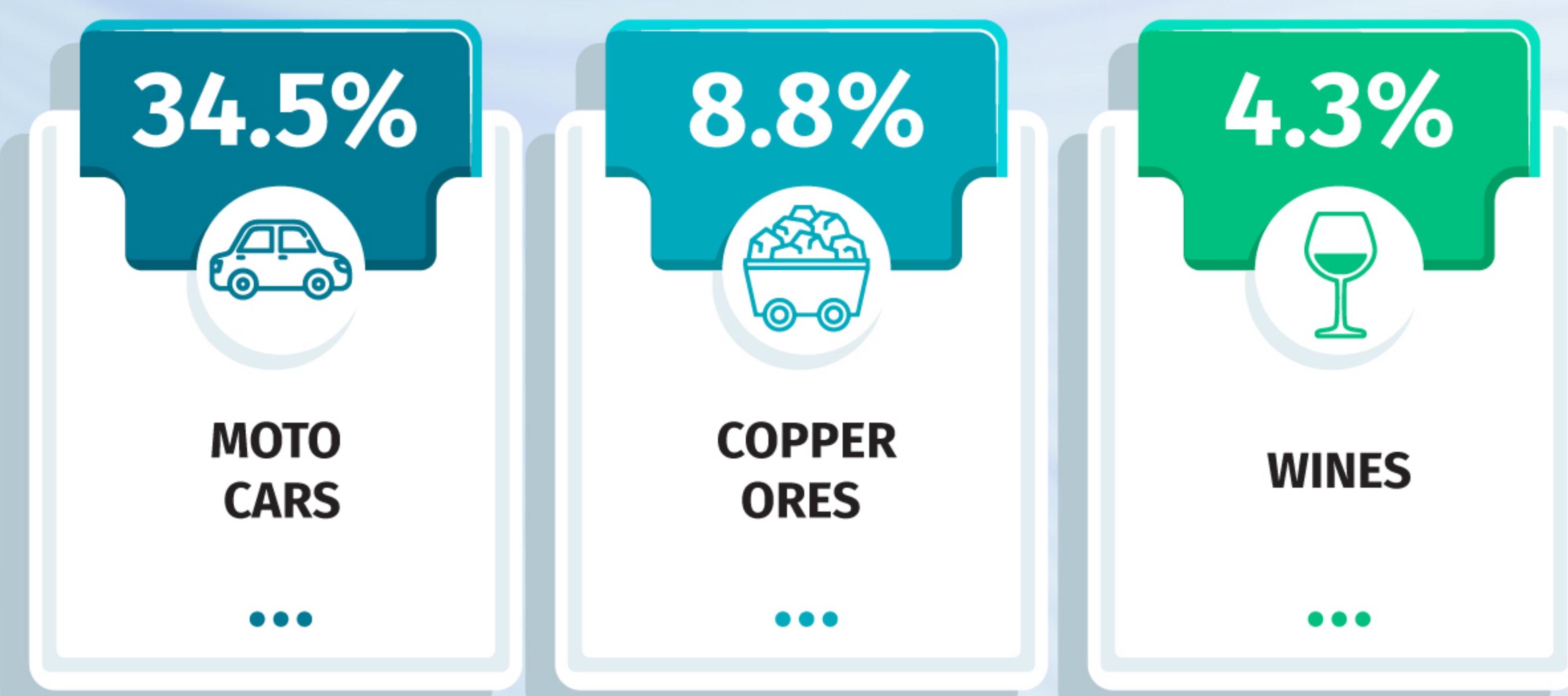
### TOP 3 PARTNERS BY EXPORTS



### TOP 3 PARTNERS BY IMPORTS



### TOP 3 PRODUCTS BY EXPORTS



### TOP 3 PRODUCTS BY IMPORTS

