

# 2023 STATISTICAL PUBLICATION



ENERGY BALANCE OF GEORGIA



**NATIONAL STATISTICS OFFICE OF GEORGIA**

# **ENERGY BALANCE OF GEORGIA 2022**

Statistical Publication

Tbilisi 2023

Statistical Publication

ENERGY BALANCE OF GEORGIA, 2022

**Editors**

Gogita Todradze

Paata Shavishvili

**Person responsible for the publication**

Daviti Zhorzholiani

**The following persons worked on the publication:**

Marine Gogoladze

Khatuna Mokia

Maka Kintsurashvili

Lela Nonikashvili

Shorena Kashbadze

Gaga Gelashvili

© National Statistics Office of Georgia, 2023

30, Tsothe Dadiani str, Tbilisi 0180

Tel.: (+995 32) 36 72 10 (601)

Fax: (+995 32) 36 72 13

E-mail: [dzhorzholiani@geostat.ge](mailto:dzhorzholiani@geostat.ge)

[info@geostat.ge](mailto:info@geostat.ge)

[www.geostat.ge](http://www.geostat.ge)

## Contents

Foreword .....	5
Survey program.....	6
<b>I. Key indicators about Georgia</b>	
1.1 Main facts about Georgia .....	7
1.2 Key economic indicators about Georgia .....	7
1.3 Power Plants operating in Georgia.....	8
1.4 Small Hydro Power Plants operating in Georgia .....	9
<b>II. Energy Balance of Georgia</b>	
2.1 Aggregated energy balance of Georgia.....	10
2.2 Electricity and heat.....	18
2.3 Natural gas .....	25
2.4 Coal .....	32
2.5 Oil and oil products .....	36
2.6 Biofuel and waste .....	46

### **Symbols and abbreviations**

0,0 Negligible magnitude

- Not applicable

. . . Data not available

The discrepancy between the totals and the sum in some cases can be explained by using rounded data.

## Foreword

The need for production of energy balance is linked to such important issues of global policy, as climate change and energy security. The publication includes statistical data for 2022 year.

A wide range of growing interest of users leads to the development of the energy balance, as it is the best way to represent the local or global policy planning.

2022 Energy Balance, like the previous years' balances, is based on the recommendations drawn up by the International Energy Agency (IEA) and Eurostat and fully complies with international standards.

The publication is based on the declared data of various surveys conducted by the National Statistics Office during 2023. Different types of administrative data as well as expert assessments have been used in order to create the energy balance.

By signing the Community treaty, National Statistics Office of Georgia is implementing requirements regulations and directives of European Parliament and of the council, related energy statistics.

Business remarks and proposals on format and contents of this publication will be perceived by the authors group with gratitude.

The publication is designed for various groups of users.

National Statistics Office of Georgia

### **Survey Program**

In order to collect data from the energy sector, producers, suppliers, distributors and traders of energy forms (coal, natural gas, electricity, oil and oil products) were surveyed at full coverage as a result of specially organized statistical surveys.

In 2022 the survey covered non-financial corporations and households. Among non-financial corporations, enterprises in agriculture, industry, construction, and the transport sector were surveyed, and unlike last year, the survey also covered service sector enterprises. Residential data were collected using a computer-assisted personal interviewing (CAPI) method, while in other sectors data collection was primarily carried out by means of online questionnaire. However, the respondents were able to use other alternative means (paper questionnaire, electronic questionnaire in excel format, fax, etc.) too.

Various types of administrative data were used to complete energy balance in addition to the above-mentioned surveys. In certain cases expert assessments were carried out as well.

The information derived from the survey allows to determine the energy production, supply and consumption structure by sectors, which is the basis for calculation of energy efficiency in the country.

## I. Key indicators about Georgia

### 1.1 Main facts about Georgia

<b>Area</b>	69 700 km <sup>2</sup>
<b>Length of state borders</b>	2 148 km
<b>Land borders</b>	1 839 km
<b>The highest mountain</b>	„Shkhara” – 5 200 m
<b>Population</b>	3 736.4 thousand persons (01.01.2023)
<b>Density</b>	65.3 persons/km <sup>2</sup> <sup>1</sup>
<b>Capital</b>	Tbilisi
<b>Official languages</b>	Georgian
<b>Currency</b>	Georgian lari (GEL)

### 1.2 Key economic indicators about Georgia, 2022

<b>Indicators</b>	<b>2022</b>
GDP at current prices, mil. GEL	72 265.7
GDP at constant 2015 prices, mil. GEL	45 819.9
DGP real growth, percentage	10.4
GDP per capita (at current prices), USD	6 676.3
Unemployment rate, percentage	17.3
CPI (Inflation), Annual Average to the Annual Average	111.9
Foreign Direct Investments, Mil. USD	2 097.9
External Trade (FOB), Mil. USD	5 583.4
Import (CIF), Mil. USD	13 547.7

<sup>1</sup> The controlled area is in use - 57 178.7 km<sup>2</sup>



## 1.3 Power Plants operating in Georgia, 2022

	Name	Installed capacity (MW)
<b>Hydro Electricity Plants</b>		
1	Engurhesi	1 300.0
2	Vardnilhesi	220.0
3	Khramhesi 1	112.8
4	Khramhesi 2	110.0
5	Zhinvalhesi	130.0
6	Vartsikhehesi	184.0
7	Rionhesi	51.0
8	Gumatihesi	69.5
9	Lajanurhesi	113.7
10	Dzevrulahesi	80.0
11	Shaorhesi	40.3
12	Zahesi	36.8
13	Ortachalahesi	18.0
14	Atshesi	18.4
15	Chitakhevihesi	21.0
16	Satskhenhesi	14.0
17	Khadorhesi	24.0
18	Larsi hesi	19.0
19	Faravanhesi	87.0
20	Darialihesi	108.0
21	Khelvachaurihesi 1	47.5
22	Shuakhevihesi	178,7
23	Kirnatihesi	51.3
24	Oldenerjihesi	21.4
25	Mestiachalahesi 1	20.0
26	Mestiachalahesi 2	30.0
27	Other Hydro Power Plants (Small Hydro power plants)	300.8
<b>Thermal Electricity Plants</b>		
28	Mtkvari energy	300.0
29	Tbilsresi	270.0
30	Gpower	110.0
31	Gardabani TP 1	231.2
32	Gardabani TP 2	230.0
<b>Wind Power Plant</b>		
33	Kartli Wind Power Plant	20.7

## 1.4 Small Hydro Power Plants operating in Georgia, 2022

1	Alazanhesi	33	Saguramohesi
2	Bzhuzhahesi	34	Rustavihesi
3	Abhesi	35	Sulorhesi
4	Tetrikhevhesi	36	Okamihesi
5	Sionhesi	37	Lopotahesi
6	Ritseulahesi	38	Zvaretihesi
7	Chalahesi	39	Tirifonhesi
8	Chkhorhesi	40	Pantianihesi
9	Dashbashihsesi	41	Pshavelahesi
10	Mashaverahesi	42	Khadorhesi-2
11	Kabalhesi	43	Khanhesi
12	Kakharetihsesi	44	Racha hesi
13	Intsobahesi	45	Dagvahesi
14	Kazbegihsesi	46	Alazanhesi-2
15	Energetiki hesi	47	Shildaheesi
16	Machakhelahesi	48	Bakhvihesi-3
17	Misaktsielhesi	49	Aragvihesi
18	Skurhesi	50	Akhmetahesi
19	Khertvisihsesi	51	Kazretihsesi
20	Kinkishahesi	52	Pshavelahesi (Stori power)
21	Achihsesi	53	Martkopihsesi
22	Igoetihsesi	54	Algetahesi
23	Sanaliahesi	55	Debedaheesi
24	Shaqshaqetihsesi	56	Maksaniahesi
25	Nakrahesi	57	Kintrishahesi
26	Nabeghlavihsesi	58	Shildaheesi 1
27	Kheorhesi	59	Kasletihsesi 2
28	Bodornaheesi	60	Jonoulihsesi 1
29	Orohesi	61	Avanihsesi
30	Chordulahesi	62	Skurdihihsesi
31	Sashualahesi 2	63	Aragvihsesi 2
32	Iparihsesi	64	Khelrahesi

Source: Electricity Market Operator (ESCO)

## AGGREGATED ENERGY BALANCE OF GEORGIA, 2022

(TJ)

	Coal	Crude Oil	Oil products	Natural Gas	Nuclear	Hydro	Geothermal, solar, wind, etc.	Biofuel & Waste	Electricity	Heat	Total
Production	2 487.9	1 555.5	-	525.4	-	38 777.0	1 162.9	8 736.5	-	-	53 245.3
Imports	6 639.1	60.1	64 181.4	120 284.2	-	-	-	-	16 896.2	-	208 061.0
Exports	1.9	-	2 209.7	-	-	-	-	23.4	14 872.7	-	17 107.6
International Marine Bunkers	-	-	137.1	-	-	-	-	-	-	-	137.1
International Aviation Bunkers	-	-	5 695.2	-	-	-	-	-	-	-	5 695.2
Stock Changes	752.4	-152.2	969.1	-	-	-	-	-	-	-	1 569.3
<b>DOMESTIC SUPPLY</b>	<b>9 877.5</b>	<b>1 463.4</b>	<b>57 108.6</b>	<b>120 809.6</b>	<b>-</b>	<b>38 777.0</b>	<b>1 162.9</b>	<b>8 713.2</b>	<b>2 023.6</b>	<b>-</b>	<b>239 935.7</b>
Available	9 877.5	1 463.4	58 878.9	120 809.6	-	38 777.0	1 162.9	8 713.2	53 311.3	-	-
Transfers	-	-	-	-	-	-	-	-	-	-	-
Statistical Differences	0.0	-359.2	0.0	0.0	-	0.0	0.0	0.0	0.0	-	-359.2
<b>Transformation Sector - Input</b>	<b>-</b>	<b>1 822.5</b>	<b>-</b>	<b>26 655.4</b>	<b>-</b>	<b>38 777.0</b>	<b>315.0</b>	<b>-</b>	<b>-</b>	<b>-</b>	<b>67 570.0</b>
MA Thermal Electricity Plants	-	-	-	26 655.4	-	-	-	-	-	-	26 655.4
MA Hydro Electricity Plants	-	-	-	-	-	38 777.0	-	-	-	-	38 777.0
MA Heat Plants	-	-	-	-	-	-	-	-	-	-	-
Petroleum Refineries	-	1 822.5	-	-	-	-	-	-	-	-	1 822.5
Wind Plants	-	-	-	-	-	-	315.0	-	-	-	315.0
<b>Transformation Sector - Production</b>	<b>-</b>	<b>-</b>	<b>1 770.3</b>	<b>-</b>	<b>-</b>	<b>-</b>	<b>-</b>	<b>-</b>	<b>51 287.8</b>	<b>-</b>	<b>53 058.1</b>
MA Thermal Electricity Plants	-	-	-	-	-	-	-	-	12 195.7	-	12 195.7
MA Hydro Electricity Plants	-	-	-	-	-	-	-	-	38 777.0	-	38 777.0
MA Heat Plants	-	-	-	-	-	-	-	-	-	-	-
Petroleum Refineries	-	-	1 770.3	-	-	-	-	-	-	-	1 770.3
Wind Plants	-	-	-	-	-	-	-	-	315.0	-	315.0

## ENERGY BALANCE OF GEORGIA, 2022

	Coal	Crude Oil	Oil products	Natural Gas	Nuclear	Hydro	Geothermal, solar, wind, etc.	Biofuel & Waste	Electricity	Heat	Total
<b>Energy Sector</b>	<b>11.9</b>	-	-	-	-	-	-	-	<b>1 035.4</b>	-	<b>1 047.2</b>
Coal Mines	11.9	-	-	-	-	-	-	-	47.5	-	59.4
Oil and Gas Extraction	-	-	-	-	-	-	-	-	-	-	-
Petroleum Refineries	-	-	-	-	-	-	-	-	-	-	-
Own Use in Thermal Electricity Plants	-	-	-	-	-	-	-	-	500.4	-	500.4
Own Use in Hydro Electricity Plants	-	-	-	-	-	-	-	-	487.4	-	487.4
Used for Pumped Storage	-	-	-	-	-	-	-	-	-	-	-
Non-specified (Energy)	-	-	-	-	-	-	-	-	-	-	-
<b>Losses</b>	-	-	-	<b>3 261.5</b>	-	-	<b>58.4</b>	-	<b>4 088.2</b>	-	<b>7 408.0</b>
<b>FINAL CONSUMPTION</b>	<b>9 865.7</b>	-	<b>58 878.9</b>	<b>90 892.6</b>	-	-	<b>789.5</b>	<b>8 713.2</b>	<b>48 187.8</b>	-	<b>217 327.7</b>
<b>Industry</b>	<b>9 817.0</b>	-	<b>4 933.3</b>	<b>9 436.4</b>	-	-	-	<b>21.8</b>	<b>13 099.0</b>	-	<b>37 307.4</b>
Iron and steel	4 813.1	-	4.1	1 087.7	-	-	-	-	7 033.3	-	12 938.3
Chemical (including petrochemical)	-	-	-	3 710.9	-	-	-	-	1 047.2	-	4 758.1
Non-ferrous metals	-	-	-	-	-	-	-	-	-	-	-
Non-metallic minerals	4 833.4	-	-	1 681.4	-	-	-	0.5	1 229.4	-	7 744.7
Transport equipment	-	-	-	0.1	-	-	-	-	11.5	-	11.7
Machinery	-	-	-	37.4	-	-	-	-	68.4	-	105.8
Mining and quarrying <sup>1</sup>	-	-	1 699.3	30.8	-	-	-	-	553.0	-	2 283.0
Food, beverages and tobacco	170.4	-	18.6	1 937.8	-	-	-	21.3	1 001.2	-	3 149.3
Paper, pulp and printing	-	-	0.0	155.9	-	-	-	-	72.4	-	228.3
Wood and wood products	-	-	-	11.0	-	-	-	-	19.4	-	30.4
Construction	-	-	3 210.9	677.7	-	-	-	-	713.9	-	4 602.4

<sup>1</sup> Including non-ferrous metals

## ENERGY BALANCE OF GEORGIA, 2022

	Coal	Crude Oil	Oil products	Natural Gas	Nuclear	Hydro	Geothermal, solar, wind, etc.	Biofuel & Waste	Electricity	Heat	Total
Textiles and leather	-	-	0.3	25.5	-	-	-	-	60.1	-	85.9
Not elsewhere specified (Industry)	-	-	0.0	80.2	-	-	-	0.0	1 289.2	-	1 369.5
<b>Transport</b>	-	-	<b>47 440.6</b>	<b>18 409.3</b>	-	-	-	<b>0.5</b>	<b>843.8</b>	-	<b>66 694.2</b>
International aviation	-	-	-	-	-	-	-	-	-	-	-
Domestic aviation	-	-	20.8	-	-	-	-	-	-	-	20.8
Road	-	-	47 226.1	6 834.3	-	-	-	0.5	-	-	54 060.8
Rail	-	-	53.6	-	-	-	-	-	743.0	-	796.7
Domestic navigation	-	-	13.6	-	-	-	-	-	-	-	13.6
Pipeline transport	-	-	126.5	11 575.0	-	-	-	-	69.8	-	11 771.4
Not elsewhere specified (Transport)	-	-	-	-	-	-	-	-	31.0	-	31.0
<b>Other</b>	<b>48.7</b>	-	<b>634.8</b>	<b>56 770.6</b>	-	-	<b>789.5</b>	<b>8 690.9</b>	<b>34 245.0</b>	-	<b>101 179.6</b>
Commercial and public services	0.3	-	2.4	9 236.9	-	-	475.7	51.9	13 301.6	-	23 068.9
Residential	3.5	-	235.0	47 165.9	-	-	270.0	8 639.0	9 655.2	-	65 968.6
Agriculture/forestry/fishing	44.9	-	397.4	367.9	-	-	43.8	-	385.2	-	1 239.1
Not elsewhere specified (Other)	-	-	-	-	-	-	-	-	10 903.0	-	10 903.0
<b>Non-energy use</b>	-	-	<b>5 870.2</b>	<b>6 276.3</b>	-	-	-	-	-	-	<b>12 146.6</b>
<b>Transformation sector</b>	-	-	-	-	-	-	-	-	-	-	-
<b>Energy sector</b>	-	-	18.4	-	-	-	-	-	-	-	18.4
<b>Transport sector</b>	-	-	860.1	-	-	-	-	-	-	-	860.1
International aviation	-	-	-	-	-	-	-	-	-	-	-
Domestic aviation	-	-	-	-	-	-	-	-	-	-	-
Road	-	-	849.8	-	-	-	-	-	-	-	849.8
Rail	-	-	9.4	-	-	-	-	-	-	-	9.4
Domestic navigation	-	-	0.9	-	-	-	-	-	-	-	0.9

## ENERGY BALANCE OF GEORGIA, 2022

	Coal	Crude Oil	Oil products	Natural Gas	Nuclear	Hydro	Geothermal, solar, wind, etc.	Biofuel & Waste	Electricity	Heat	Total
Pipeline transport	-	-	-	-	-	-	-	-	-	-	-
Not elsewhere specified (Transport)	-	-	-	-	-	-	-	-	-	-	-
<b>Industry sector</b>	-	-	<b>4 990.7</b>	<b>6 276.3</b>	-	-	-	-	-	-	<b>11 267.0</b>
Iron and steel	-	-	1.7	-	-	-	-	-	-	-	1.7
Chemical (including petrochemical)	-	-	105.3	6 276.3	-	-	-	-	-	-	6 381.6
Non-ferrous metals	-	-	-	-	-	-	-	-	-	-	-
Non-metallic minerals	-	-	130.2	-	-	-	-	-	-	-	130.2
Transport equipment	-	-	-	-	-	-	-	-	-	-	-
Machinery	-	-	-	-	-	-	-	-	-	-	-
Mining and quarrying <sup>2</sup>	-	-	37.0	-	-	-	-	-	-	-	37.0
Food, beverages and tobacco	-	-	0.3	-	-	-	-	-	-	-	0.3
Paper, pulp and printing	-	-	-	-	-	-	-	-	-	-	-
Wood and wood products	-	-	-	-	-	-	-	-	-	-	-
Construction	-	-	4 715.9	-	-	-	-	-	-	-	4 715.9
Textiles and leather	-	-	-	-	-	-	-	-	-	-	-
Not elsewhere specified (Industry)	-	-	0.4	-	-	-	-	-	-	-	0.4
<b>Other sectors</b>	-	-	<b>1.0</b>	-	-	-	-	-	-	-	<b>1.0</b>
Commercial and public services	-	-	-	-	-	-	-	-	-	-	-
Residential	-	-	-	-	-	-	-	-	-	-	-
Agriculture/forestry/fishing	-	-	1.0	-	-	-	-	-	-	-	1.0
Not elsewhere specified (Other)	-	-	-	-	-	-	-	-	-	-	-

<sup>2</sup> Including non-ferrous metals-

**AGGREGATED ENERGY BALANCE OF GEORGIA, 2022**

(Thousand tonnes of oil equivalent)

	Coal	Crude Oil	Oil products	Natural Gas	Nuclear	Hydro	Geothermal, solar, wind etc.	Biofuel & Waste	Electricity	Heat	Total
Production	59.4	37.2	-	12.5	-	926.2	27.8	208.7	-	-	1 271.7
Imports	158.6	1.4	1 532.9	2 872.9	-	-	-	-	403.6	-	4 969.5
Exports	0.0	-	52.8	-	-	-	-	0.6	355.2	-	408.6
International Marine Bunkers	-	-	3.3	-	-	-	-	-	-	-	3.3
International Aviation Bunkers	-	-	136.0	-	-	-	-	-	-	-	136.0
Stock Changes	18.0	-3.6	23.1	-	-	-	-	-	-	-	37.5
<b>DOMESTIC SUPPLY</b>	<b>235.9</b>	<b>35.0</b>	<b>1 364.0</b>	<b>2 885.5</b>	<b>-</b>	<b>926.2</b>	<b>27.8</b>	<b>208.1</b>	<b>48.3</b>	<b>-</b>	<b>5 730.8</b>
Available	235.9	35.0	1 406.3	2 885.5	-	926.2	27.8	208.1	1 273.3	-	-
Transfers	-	-	-	-	-	-	-	-	-	-	-
Statistical Differences	0.0	-8.6	0.0	0.0	-	0.0	0.0	0.0	0.0	-	-8.6
<b>Transformation Sector - Input</b>	<b>-</b>	<b>43.5</b>	<b>-</b>	<b>636.7</b>	<b>-</b>	<b>926.2</b>	<b>7.5</b>	<b>-</b>	<b>-</b>	<b>-</b>	<b>1 613.9</b>
MA Thermal Electricity Plants	-	-	-	636.7	-	-	-	-	-	-	636.7
MA Hydro Electricity Plants	-	-	-	-	-	926.2	-	-	-	-	926.2
MA Heat Plants	-	-	-	-	-	-	-	-	-	-	-
Petroleum Refineries	-	43.5	-	-	-	-	-	-	-	-	43.5
Wind Plants	-	-	-	-	-	-	7.5	-	-	-	7.5
<b>Transformation Sector – Production</b>	<b>-</b>	<b>-</b>	<b>42.3</b>	<b>-</b>	<b>-</b>	<b>-</b>	<b>-</b>	<b>-</b>	<b>1 225.0</b>	<b>-</b>	<b>1 267.3</b>
MA Thermal Electricity Plants	-	-	-	-	-	-	-	-	291.3	-	291.3
MA Hydro Electricity Plants	-	-	-	-	-	-	-	-	926.2	-	926.2
MA Heat Plants	-	-	-	-	-	-	-	-	-	-	-
Petroleum Refineries	-	-	42.3	-	-	-	-	-	-	-	42.3
Wind Plants	-	-	-	-	-	-	-	-	7.5	-	7.5

## ENERGY BALANCE OF GEORGIA, 2022

	Coal	Crude Oil	Oil products	Natural Gas	Nuclear	Hydro	Geothermal, solar, wind etc.	Biofuel & Waste	Electricity	Heat	Total
<b>Energy Sector</b>	<b>0.3</b>	<b>0.0</b>	-	-	-	-	-	-	<b>24.7</b>	-	<b>25.0</b>
Coal Mines	0.3	-	-	-	-	-	-	-	1.1	-	1.4
Oil and Gas Extraction	-	-	-	-	-	-	-	-	-	-	-
Petroleum Refineries	-	0.0	-	-	-	-	-	-	-	-	0.0
Own Use in Thermal Electricity Plants	-	-	-	-	-	-	-	-	12.0	-	12.0
Own Use in Hydro Electricity Plants	-	-	-	-	-	-	-	-	11.6	-	11.6
Used for Pumped Storage	-	-	-	-	-	-	-	-	-	-	-
Non-specified (Energy)	-	-	-	-	-	-	-	-	-	-	-
<b>Losses</b>	-	-	-	<b>77.9</b>	-	-	<b>1.4</b>	-	<b>97.6</b>	-	<b>176.9</b>
<b>FINAL CONSUMPTION</b>	<b>235.6</b>	-	<b>1 406.3</b>	<b>2 170.9</b>	-	-	<b>18.9</b>	<b>208.1</b>	<b>1 150.9</b>	-	<b>5 190.8</b>
<b>Industry</b>	<b>234.5</b>	-	<b>117.8</b>	<b>225.4</b>	-	-	-	<b>0.5</b>	<b>312.9</b>	-	<b>891.1</b>
Iron and steel	115.0	-	0.1	26.0	-	-	-	-	168.0	-	309.0
Chemical (including petrochemical)	-	-	-	88.6	-	-	-	-	25.0	-	113.6
Non-ferrous metals	-	-	-	-	-	-	-	-	-	-	-
Non-metallic minerals	115.4	-	-	40.2	-	-	-	0.0	29.4	-	185.0
Transport equipment	-	-	-	0.0	-	-	-	-	0.3	-	0.3
Machinery	-	-	-	0.9	-	-	-	-	1.6	-	2.5
Mining and quarrying <sup>3</sup>	-	-	40.6	0.7	-	-	-	-	13.2	-	54.5
Food, beverages and tobacco	4.1	-	0.4	46.3	-	-	-	0.5	23.9	-	75.2
Paper, pulp and printing	-	-	0.0	3.7	-	-	-	-	1.7	-	5.5
Wood and wood products	-	-	-	0.3	-	-	-	-	0.5	-	0.7
Construction	-	-	76.7	16.2	-	-	-	-	17.1	-	109.9
Textiles and leather	-	-	0.0	0.6	-	-	-	-	1.4	-	2.1
Not elsewhere specified (Industry)	-	-	0.0	1.9	-	-	-	0.0	30.8	-	32.7

<sup>3</sup> Including non-ferrous metals



## ENERGY BALANCE OF GEORGIA, 2022

	Coal	Crude Oil	Oil products	Natural Gas	Nuclear	Hydro	Geothermal, solar, wind etc.	Biofuel & Waste	Electricity	Heat	Total
<b>Transport</b>	-	-	<b>1 133.1</b>	<b>439.7</b>	-	-	-	<b>0.0</b>	<b>20.2</b>	-	<b>1 593.0</b>
International aviation	-	-	-	-	-	-	-	-	-	-	-
Domestic aviation	-	-	0.5	-	-	-	-	-	-	-	0.5
Road	-	-	1 128.0	163.2	-	-	-	0.0	-	-	1 291.2
Rail	-	-	1.3	-	-	-	-	-	17.7	-	19.0
Domestic navigation	-	-	0.3	-	-	-	-	-	-	-	0.3
Pipeline transport	-	-	3.0	276.5	-	-	-	-	1.7	-	281.2
Not elsewhere specified (Transport)	-	-	-	-	-	-	-	-	0.7	-	0.7
<b>Other</b>	<b>1.2</b>	-	<b>15.2</b>	<b>1 355.9</b>	-	-	<b>18.9</b>	<b>207.6</b>	<b>817.9</b>	-	<b>2 416.6</b>
Commercial and public services	0.0	-	0.1	220.6	-	-	11.4	1.2	317.7	-	551.0
Residential	0.1	-	5.6	1 126.5	-	-	6.4	206.3	230.6	-	1 575.6
Agriculture/forestry/fishing	1.1	-	9.5	8.8	-	-	1.0	-	9.2	-	29.6
Not elsewhere specified (Other)	-	-	-	-	-	-	-	-	260.4	-	260.4
<b>Non-energy use</b>	-	-	<b>140.2</b>	<b>149.9</b>	-	-	-	-	-	-	<b>290.1</b>
<b>Transformation sector</b>	-	-	-	-	-	-	-	-	-	-	-
<b>Energy sector</b>	-	-	<b>0.4</b>	-	-	-	-	-	-	-	<b>0.4</b>
<b>Transport sector</b>	-	-	<b>20.5</b>	-	-	-	-	-	-	-	<b>20.5</b>
International aviation	-	-	-	-	-	-	-	-	-	-	-
Domestic aviation	-	-	-	-	-	-	-	-	-	-	-
Road	-	-	20.3	-	-	-	-	-	-	-	20.3
Rail	-	-	0.2	-	-	-	-	-	-	-	0.2
Domestic navigation	-	-	0.0	-	-	-	-	-	-	-	0.0
Pipeline transport	-	-	-	-	-	-	-	-	-	-	-
Not elsewhere specified (Transport)	-	-	-	-	-	-	-	-	-	-	-

## ENERGY BALANCE OF GEORGIA, 2022

	Coal	Crude Oil	Oil products	Natural Gas	Nuclear	Hydro	Geothermal, solar, wind etc.	Biofuel & Waste	Electricity	Heat	Total
<b>Industry sector</b>	-	-	<b>119.2</b>	<b>149.9</b>	-	-	-	-	-	-	<b>269.1</b>
Iron and steel	-	-	0.0	-	-	-	-	-	-	-	0.0
Chemical (including petrochemical)	-	-	2.5	149.9	-	-	-	-	-	-	152.4
Non-ferrous metals	-	-	-	-	-	-	-	-	-	-	-
Non-metallic minerals	-	-	3.1	-	-	-	-	-	-	-	3.1
Transport equipment	-	-	-	-	-	-	-	-	-	-	-
Machinery	-	-	-	-	-	-	-	-	-	-	-
Mining and quarrying <sup>4</sup>	-	-	0.9	-	-	-	-	-	-	-	0.9
Food, beverages and tobacco	-	-	0.0	-	-	-	-	-	-	-	0.0
Paper, pulp and printing	-	-	-	-	-	-	-	-	-	-	-
Wood and wood products	-	-	-	-	-	-	-	-	-	-	-
Construction	-	-	112.6	-	-	-	-	-	-	-	112.6
Textiles and leather	-	-	-	-	-	-	-	-	-	-	-
Not elsewhere specified (Industry)	-	-	0.0	-	-	-	-	-	-	-	0.0
<b>Other sectors</b>	-	-	<b>0.0</b>	-	-	-	-	-	-	-	<b>0.0</b>
Commercial and public services	-	-	-	-	-	-	-	-	-	-	-
Residential	-	-	-	-	-	-	-	-	-	-	-
Agriculture/forestry/fishing	-	-	0.0	-	-	-	-	-	-	-	0.0
Not elsewhere specified (Other)	-	-	-	-	-	-	-	-	-	-	-

<sup>4</sup> Including non-ferrous metals

# ***ELECTRICITY AND HEAT***



## SUPPLY AND CONSUMPTION OF ELECTRICITY AND HEAT, 2022

	Hydro (GWh)	Wind (GWh)	Geothermal (TJ)	Solar (TJ)	Electricity (GWh)
Production	10 771.4	87.5	695.8	152.1	14 246.6
Imports	-	-	-	-	4 693.4
Exports	-	-	-	-	4 131.3
Stock Changes	-	-	-	-	-
<b>DOMESTIC SUPPLY</b>	<b>10 771.4</b>	<b>87.5</b>	<b>695.8</b>	<b>152.1</b>	<b>14 808.7</b>
Transfers	-	-	-	-	-
Statistical Differences	0.0	0.0	0.0	0.0	0.0
<b>Transformation Sector - Input</b>	<b>10 771.4</b>	<b>87.5</b>	<b>-</b>	<b>-</b>	<b>-</b>
MA Hydro Electricity Plants	10 771.4	-	-	-	-
Wind Plants	-	87.5	-	-	-
<b>Transformation Sector - Production</b>	<b>-</b>	<b>-</b>	<b>-</b>	<b>-</b>	<b>14 246.6</b>
MA Thermal Electricity Plants	-	-	-	-	3 387.7
MA Hydro Electricity Plants	-	-	-	-	10 771.4
Wind Plants	-	-	-	-	87.5
<b>Energy Sector</b>	<b>-</b>	<b>-</b>	<b>-</b>	<b>-</b>	<b>287.6</b>
Coal Mines	-	-	-	-	13.2
Own Use in Thermal Electricity Plants	-	-	-	-	139.0
Own Use in Hydro Electricity Plants	-	-	-	-	135.4
Other	-	-	-	-	0.0
<b>Losses</b>	<b>-</b>	<b>-</b>	<b>58.4</b>	<b>-</b>	<b>1 135.6</b>
<b>FINAL CONSUMPTION</b>	<b>-</b>	<b>-</b>	<b>637.4</b>	<b>152.1</b>	<b>13 385.5</b>
<b>Industry</b>	<b>-</b>	<b>-</b>	<b>-</b>	<b>-</b>	<b>3 638.6</b>
Iron and steel	-	-	-	-	1 953.7
Chemical (including petrochemical)	-	-	-	-	290.9
Non-ferrous metals	-	-	-	-	-
Non-metallic minerals	-	-	-	-	341.5
Transport equipment	-	-	-	-	3.2
Machinery	-	-	-	-	19.0
Mining and quarrying <sup>1</sup>	-	-	-	-	153.6
Food, beverages and tobacco	-	-	-	-	278.1
Paper, pulp and printing	-	-	-	-	20.1
Wood and wood products	-	-	-	-	5.4
Construction	-	-	-	-	198.3
Textiles and leather	-	-	-	-	16.7
Not elsewhere specified (Industry)	-	-	-	-	358.1

<sup>1</sup>Including non-ferrous metals

## ELECTRICITY AND HEAT

	Hydro (GWh)	Wind (GWh)	Geothermal (TJ)	Solar (TJ)	Electricity (GWh)
<b>Transport</b>	-	-	-	-	<b>234.4</b>
Rail	-	-	-	-	206.4
Pipeline transport	-	-	-	-	19.4
Other	-	-	-	-	8.6
<b>Other</b>	-	-	<b>637.4</b>	<b>152.1</b>	<b>9 512.5</b>
Commercial and public services	-	-	328.4	147.3	3 694.9
Residential	-	-	265.2	4.8	2 682.0
Agriculture/forestry/fishing	-	-	43.8	-	107.0
Not elsewhere specified (Other)	-	-	-	-	3 028.6

**SUPPLY AND CONSUMPTION OF ELECTRICITY AND HEAT, 2022**  
(TJ)

	Hydro	Wind	Geothermal	Solar	Electricity	Total
Production	38 777.0	315.0	695.8	152.1	-	39 939.9
Imports	-	-	-	-	16 896.2	16 896.2
Exports	-	-	-	-	14 872.7	14 872.7
Stock Changes	-	-	-	-	-	-
<b>DOMESTIC SUPPLY</b>	<b>38 777.0</b>	<b>315.0</b>	<b>695.8</b>	<b>152.1</b>	<b>2 023.6</b>	<b>41 963.5</b>
Available	38 777.0	315.0	695.8	152.1	53 311.3	-
Transfers	-	-	-	-	-	-
Statistical Differences	0.0	0.0	0.0	0.0	0.0	0.0
<b>Transformation Sector - Input</b>	<b>38 777.0</b>	<b>315.0</b>	<b>-</b>	<b>-</b>	<b>-</b>	<b>39 092.0</b>
MA Hydro Electricity Plants	38 777.0	-	-	-	-	38 777.0
Wind Plants	-	315.0	-	-	-	315.0
<b>Transformation Sector - Production</b>	<b>-</b>	<b>-</b>	<b>-</b>	<b>-</b>	<b>51 287.8</b>	<b>51 287.8</b>
MA Thermal Electricity Plants	-	-	-	-	12 195.7	12 195.7
MA Hydro Electricity Plants	-	-	-	-	38 777.0	38 777.0
Wind Plants	-	-	-	-	315.0	315.0
<b>Energy Sector</b>	<b>-</b>	<b>-</b>	<b>-</b>	<b>-</b>	<b>1 035.4</b>	<b>1 035.4</b>
Coal Mines	-	-	-	-	47.5	47.5
Own Use in Thermal Electricity Plants	-	-	-	-	500.4	500.4
Own Use in Hydro Electricity Plants	-	-	-	-	487.4	487.4
Other	-	-	-	-	0.0	0.0
<b>Losses</b>	<b>-</b>	<b>-</b>	<b>58.4</b>	<b>-</b>	<b>4 088.2</b>	<b>4 146.6</b>
<b>FINAL CONSUMPTION</b>	<b>-</b>	<b>-</b>	<b>637.4</b>	<b>152.1</b>	<b>48 187.8</b>	<b>48 977.3</b>
<b>Industry</b>	<b>-</b>	<b>-</b>	<b>-</b>	<b>-</b>	<b>13 099.0</b>	<b>13 099.0</b>
Iron and steel	-	-	-	-	7 033.3	7 033.3
Chemical (including petrochemical)	-	-	-	-	1 047.2	1 047.2
Non-ferrous metals	-	-	-	-	-	-
Non-metallic minerals	-	-	-	-	1 229.4	1 229.4
Transport equipment	-	-	-	-	11.5	11.5
Machinery	-	-	-	-	68.4	68.4
Mining and quarrying <sup>2</sup>	-	-	-	-	553.0	553.0
Food, beverages and tobacco	-	-	-	-	1 001.2	1 001.2
Paper, pulp and printing	-	-	-	-	72.4	72.4
Wood and wood products	-	-	-	-	19.4	19.4
Construction	-	-	-	-	713.9	713.9
Textiles and leather	-	-	-	-	60.1	60.1
Not elsewhere specified (Industry)	-	-	-	-	1 289.2	1 289.2

<sup>2</sup>Including non-ferrous metals

## ELECTRICITY AND HEAT

	Hydro	Wind	Geothermal	Solar	Electricity	Total
<b>Transport</b>	-	-	-	-	<b>843.8</b>	<b>843.8</b>
Rail	-	-	-	-	743.0	743.0
Pipeline transport	-	-	-	-	69.8	69.8
Other	-	-	-	-	31.0	31.0
<b>Other</b>	-	-	<b>637.4</b>	<b>152.1</b>	<b>34 245.0</b>	<b>35 034.5</b>
Commercial and public services	-	-	328.4	147.3	13 301.6	13 777.3
Residential	-	-	265.2	4.8	9 655.2	9 925.2
Agriculture/forestry/fishing	-	-	43.8	-	385.2	429.0
Not elsewhere specified (Other)	-	-	-	-	10 903.0	10 903.0

**SUPPLY AND CONSUMPTION OF ELECTRICITY AND HEAT, 2022**  
(Thousand tonnes of oil equivalent)

	Hydro	Wind	Geothermal	Solar	Electricity	Total
Production	926.2	7.5	16.6	3.6	-	953.9
Imports	-	-	-	-	403.6	403.6
Exports	-	-	-	-	355.2	355.2
Stock Changes	-	-	-	-	-	-
<b>DOMESTIC SUPPLY</b>	<b>926.2</b>	<b>7.5</b>	<b>16.6</b>	<b>3.6</b>	<b>48.3</b>	<b>1 002.3</b>
Available	926.2	7.5	16.6	3.6	1 273.3	-
Transfers	-	-	-	-	-	-
Statistical Differences	0.0	0.0	0.0	0.0	0.0	0.0
<b>Transformation Sector - Input</b>	<b>926.2</b>	<b>7.5</b>	<b>-</b>	<b>-</b>	<b>-</b>	<b>933.7</b>
MA Hydro Electricity Plants	926.2	-	-	-	-	926.2
Wind Plants	-	7.5	-	-	-	7.5
<b>Transformation Sector - Production</b>	<b>-</b>	<b>-</b>	<b>-</b>	<b>-</b>	<b>1 225.0</b>	<b>1 225.0</b>
MA Thermal Electricity Plants	-	-	-	-	291.3	291.3
MA Hydro Electricity Plants	-	-	-	-	926.2	926.2
Wind Plants	-	-	-	-	7.5	7.5
<b>Energy Sector</b>	<b>-</b>	<b>-</b>	<b>-</b>	<b>-</b>	<b>24.7</b>	<b>24.7</b>
Coal Mines	-	-	-	-	1.1	1.1
Own Use in Thermal Electricity Plants	-	-	-	-	12.0	12.0
Own Use in Hydro Electricity Plants	-	-	-	-	11.6	11.6
Other	-	-	-	-	0.0	0.0
<b>Losses</b>	<b>-</b>	<b>-</b>	<b>1.4</b>	<b>-</b>	<b>97.6</b>	<b>99.0</b>
<b>FINAL CONSUMPTION</b>	<b>-</b>	<b>-</b>	<b>15.2</b>	<b>3.6</b>	<b>1 150.9</b>	<b>1 169.8</b>
<b>Industry</b>	<b>-</b>	<b>-</b>	<b>-</b>	<b>-</b>	<b>312.9</b>	<b>312.9</b>
Iron and steel	-	-	-	-	168.0	168.0
Chemical (including petrochemical)	-	-	-	-	25.0	25.0
Non-ferrous metals	-	-	-	-	-	-
Non-metallic minerals	-	-	-	-	29.4	29.4
Transport equipment	-	-	-	-	0.3	0.3
Machinery	-	-	-	-	1.6	1.6
Mining and quarrying <sup>3</sup>	-	-	-	-	13.2	13.2
Food, beverages and tobacco	-	-	-	-	23.9	23.9
Paper, pulp and printing	-	-	-	-	1.7	1.7
Wood and wood products	-	-	-	-	0.5	0.5
Construction	-	-	-	-	17.1	17.1
Textiles and leather	-	-	-	-	1.4	1.4
Not elsewhere specified (Industry)	-	-	-	-	30.8	30.8

<sup>3</sup>Including non-ferrous metals



## ELECTRICITY AND HEAT

	Hydro	Wind	Geothermal	Solar	Electricity	Total
<b>Transport</b>	-	-	-	-	<b>20.2</b>	<b>20.2</b>
Rail	-	-	-	-	17.7	17.7
Pipeline transport	-	-	-	-	1.7	1.7
Other	-	-	-	-	0.7	0.7
<b>Other</b>	-	-	<b>15.2</b>	<b>3.6</b>	<b>817.9</b>	<b>836.8</b>
Commercial and public services	-	-	7.8	3.5	317.7	329.1
Residential	-	-	6.3	0.1	230.6	237.1
Agriculture/forestry/fishing	-	-	1.0	-	9.2	10.2
Not elsewhere specified (Other)	-	-	-	-	260.4	260.4

# ***NATURAL GAS***



## SUPPLY AND CONSUMPTION OF NATURAL GAS, 2022

	Natural Gas (mil. m <sup>3</sup> )
Production	14.6
Imports	3 346.3
Exports	-
Stock Changes	-
<b>DOMESTIC SUPPLY</b>	<b>3 361.0</b>
Transfers	-
Statistical Differences	0.0
<b>Transformation Sector - Input</b>	<b>741.6</b>
MA Thermal Electricity Plants	741.6
MA Hydro Electricity Plants	-
MA Heat Plants	-
Petroleum Refineries	-
<b>Losses</b>	<b>90.7</b>
<b>FINAL CONSUMPTION</b>	<b>2 528.7</b>
<b>Industry</b>	<b>262.5</b>
Iron and steel	30.3
Chemical (including petrochemical)	103.2
Non-ferrous metals	-
Non-metallic minerals	46.8
Transport equipment	0.0
Machinery	1.0
Mining and quarrying <sup>1</sup>	0.9
Food, beverages and tobacco	53.9
Paper, pulp and printing	4.3
Wood and wood products	0.3
Construction	18.9
Textiles and leather	0.7
Not elsewhere specified (Industry)	2.2
<b>Transport</b>	<b>512.2</b>
Road	190.1
Pipeline transport	322.0

<sup>1</sup> Including non-ferrous metals

## NATURAL GAS

	Natural Gas (mil. m <sup>3</sup> )
<b>Other</b>	<b>1 579.4</b>
Commercial and public services	257.0
Residential	1 312.2
Agriculture/forestry/fishing	10.2
other	-
<b>Non-energy use</b>	<b>174.6</b>
<b>Industry sector</b>	<b>174.6</b>
Chemical (including petrochemical)	174.6

The volume of natural gas is given at standard conditions of 15°C

## SUPPLY AND CONSUMPTION OF NATURAL GAS, 2022

(TJ)

	Natural Gas
Production	525.4
Imports	120 284.2
Exports	-
Stock Changes	-
<b>DOMESTIC SUPPLY</b>	<b>120 809.6</b>
Available	120 809.6
Transfers	-
Statistical Differences	0.0
<b>Transformation Sector - Input</b>	<b>26 655.4</b>
MA Thermal Electricity Plants	26 655.4
MA Hydro Electricity Plants	-
MA Heat Plants	-
Petroleum Refineries	-
<b>Losses</b>	<b>3 261.5</b>
<b>FINAL CONSUMPTION</b>	<b>90 892.6</b>
<b>Industry</b>	<b>9 436.4</b>
Iron and steel	1 087.7
Chemical (including petrochemical)	3 710.9
Non-ferrous metals	-
Non-metallic minerals	1 681.4
Transport equipment	0.1
Machinery	37.4
Mining and quarrying <sup>2</sup>	30.8
Food, beverages and tobacco	1 937.8
Paper, pulp and printing	155.9
Wood and wood products	11.0
Construction	677.7
Textiles and leather	25.5
Not elsewhere specified (Industry)	80.2
<b>Transport</b>	<b>18 409.3</b>
Road	6 834.3
Pipeline transport	11 575.0

<sup>2</sup> Including non-ferrous metals

## NATURAL GAS

	Natural Gas
<b>Other</b>	<b>56 770.6</b>
Commercial and public services	9 236.9
Residential	47 165.9
Agriculture/forestry/fishing	367.9
Not elsewhere specified (Other)	-
<b>Non-energy use</b>	<b>6 276.3</b>
<b>Industry sector</b>	<b>6 276.3</b>
Chemical (including petrochemical)	6 276.3

## SUPPLY AND CONSUMPTION OF NATURAL GAS, 2022

(Thousand tonnes of oil equivalent)

	Natural Gas
Production	12.5
Imports	2 872.9
Exports	-
Stock Changes	-
<b>DOMESTIC SUPPLY</b>	<b>2 885.5</b>
Available	2 885.5
Transfers	-
Statistical Differences	-
<b>Transformation Sector - Input</b>	<b>636.7</b>
MA Thermal Electricity Plants	636.7
MA Hydro Electricity Plants	-
MA Heat Plants	-
Petroleum Refineries	-
<b>Losses</b>	<b>77.9</b>
<b>FINAL CONSUMPTION</b>	<b>2 170.9</b>
<b>Industry</b>	<b>225.4</b>
Iron and steel	26.0
Chemical (including petrochemical)	88.6
Non-ferrous metals	-
Non-metallic minerals	40.2
Transport equipment	0.0
Machinery	0.9
Mining and quarrying <sup>3</sup>	0.7
Food, beverages and tobacco	46.3
Paper, pulp and printing	3.7
Wood and wood products	0.3
Construction	16.2
Textiles and leather	0.6
Not elsewhere specified (Industry)	1.9
<b>Transport</b>	<b>439.7</b>
Road	163.2
Pipeline transport	276.5

<sup>3</sup> Including non-ferrous metals

## NATURAL GAS

	Natural Gas
<b>Other</b>	<b>1 355.9</b>
Commercial and public services	220.6
Residential	1 126.5
Agriculture/forestry/fishing	8.8
Not elsewhere specified (Other)	-
<b>Non-energy use</b>	<b>149.9</b>
<b>Industry sector</b>	<b>149.9</b>
Chemical (including petrochemical)	149.9



# COAL



## SUPPLY AND CONSUMPTION OF COAL, 2022

(Thousand tonnes)

	Anthracite	Other Bit. Coal	Lignite/ Brown Coal	Coke Oven Coke
Production	-	-	146.3	-
Imports	5.3	98.2	-	137.5
Exports	-	-	0.1	-
Stock Changes	-0.2	35.0	-2.1	-2.7
<b>DOMESTIC SUPPLY</b>	<b>5.1</b>	<b>133.1</b>	<b>144.1</b>	<b>134.8</b>
Transfers	-	-	-	-
Statistical Differences	0.0	0.0	0.0	0.0
<b>Transformation Sector - Input</b>	<b>-</b>	<b>-</b>	<b>-</b>	<b>-</b>
Coal TP	-	-	-	-
<b>Energy Sector</b>	<b>-</b>	<b>-</b>	<b>0.7</b>	<b>-</b>
Coal Mines	-	-	0.7	-
<b>FINAL CONSUMPTION</b>	<b>5.1</b>	<b>133.1</b>	<b>143.4</b>	<b>134.8</b>
<b>Industry</b>	<b>5.1</b>	<b>133.1</b>	<b>140.6</b>	<b>134.8</b>
Iron and steel	-	3.0	46.3	134.8
Non-metallic minerals	-	129.3	94.2	-
Mining and quarrying <sup>1</sup>	-	-	-	-
Food, beverages and tobacco	5.1	0.8	-	-
Wood and wood products	-	-	-	-
<b>Other</b>	<b>-</b>	<b>-</b>	<b>2.9</b>	<b>-</b>
Commercial and public services	-	-	0.0	-
Residential	-	-	0.2	-
Agriculture/forestry/fishing	-	-	2.6	-

<sup>1</sup>Including non-ferrous metals

## SUPPLY AND CONSUMPTION OF COAL, 2022

(TJ)

	Anthracite	Other Bit. Coal	Lignite/ Brown Coal	Coke Oven Coke	Total
Production	-	-	2 487.9	-	2 487.9
Imports	154.8	2 453.9	-	4 030.5	6 639.1
Exports	-	-	1.9	-	1.9
Stock Changes	-5.2	873.9	-35.9	-80.4	752.4
<b>DOMESTIC SUPPLY</b>	<b>149.6</b>	<b>3 327.8</b>	<b>2 450.1</b>	<b>3 950.1</b>	<b>9 877.5</b>
Available	149.6	3 327.8	2 450.1	3 950.1	9 877.5
Transfers	-	-	-	-	-
Statistical Differences	0.0	0.0	0.0	0.0	0.0
<b>Transformation Sector - Input</b>	<b>-</b>	<b>-</b>	<b>-</b>	<b>-</b>	<b>-</b>
Coal TP	-	-	-	-	-
<b>Energy Sector</b>	<b>-</b>	<b>-</b>	<b>11.9</b>	<b>-</b>	<b>11.9</b>
Coal Mines	-	-	11.9	-	11.9
<b>FINAL CONSUMPTION</b>	<b>149.6</b>	<b>3 327.8</b>	<b>2 438.3</b>	<b>3 950.1</b>	<b>9 865.7</b>
<b>Industry</b>	<b>149.6</b>	<b>3 327.8</b>	<b>2 389.6</b>	<b>3 950.1</b>	<b>9 817.0</b>
Iron and steel	-	75.3	787.8	3 950.1	4 813.1
Non-metallic minerals	-	3 231.7	1 601.7	-	4 833.4
Mining and quarrying <sup>2</sup>	-	-	-	-	-
Food, beverages and tobacco	149.6	20.8	-	-	170.4
Wood and wood products	-	-	-	-	-
<b>Other</b>	<b>-</b>	<b>-</b>	<b>48.7</b>	<b>-</b>	<b>48.7</b>
Commercial and public services	-	-	0.3	-	0.3
Residential	-	-	3.5	-	3.5
Agriculture/forestry/fishing	-	-	44.9	-	44.9

<sup>2</sup>Including non-ferrous metals

## SUPPLY AND CONSUMPTION OF COAL, 2022

(Thousand tonnes of oil equivalent)

	Anthracite	Other Bit. Coal	Lignite/ Brown Coal	Coke Oven Coke	Total
Production	-	-	59.4	-	59.4
Imports	3.7	58.6	-	96.3	158.6
Exports	-	-	0.0	-	0.0
Stock Changes	-0.1	20.9	-0.9	-1.9	18.0
<b>Domestic Supply</b>	<b>3.6</b>	<b>79.5</b>	<b>58.5</b>	<b>94.3</b>	<b>235.9</b>
Available	3.6	79.5	58.5	94.3	235.9
Transfers	-	-	-	-	-
Statistical Differences	0.0	0.0	0.0	0.0	0.0
<b>Transformation Sector - Input</b>	<b>-</b>	<b>-</b>	<b>-</b>	<b>-</b>	<b>-</b>
Coal TP	-	-	-	-	-
<b>Energy Sector</b>	<b>-</b>	<b>-</b>	<b>0.3</b>	<b>-</b>	<b>0.3</b>
Coal Mines	-	-	0.3	-	0.3
<b>FINAL CONSUMPTION</b>	<b>3.6</b>	<b>79.5</b>	<b>58.2</b>	<b>94.3</b>	<b>235.6</b>
<b>Industry</b>	<b>3.6</b>	<b>79.5</b>	<b>57.1</b>	<b>94.3</b>	<b>234.5</b>
Iron and steel	-	1.8	18.8	94.3	115.0
Non-metallic minerals	-	77.2	38.3	-	115.4
Mining and quarrying <sup>3</sup>	-	-	-	-	-
Food, beverages and tobacco	3.6	0.5	-	-	4.1
Wood and wood products	-	-	-	-	-
<b>Other</b>	<b>-</b>	<b>-</b>	<b>1.2</b>	<b>-</b>	<b>1.2</b>
Commercial and public services	-	-	0.0	-	0.0
Residential	-	-	0.1	-	0.1
Agriculture/forestry/fishing	-	-	1.1	-	1.1

<sup>3</sup>Including non-ferrous metals

# ***OIL AND OIL PRODUCTS***



## OIL AND OIL PRODUCTS

### SUPPLY AND CONSUMPTION OF OIL AND OIL PRODUCTS, 2022

	Crude Oil (1000 tonnes)	Liquefied Petroleum Gases (1000 tonnes)	Motor Gasoline (1000 tonnes)	Kerosene type Jet Fuel (1000 tonnes)	Kerosene (1000 tonnes)	Road diesel (1000 tonnes)	Heating and other gas oil (1000 tonnes)	Fuel oil- low sulphur (< 1%) (1000 tonnes)	Fuel oil- high sulphur (>= 1%) (1000 tonnes)	Lubricants (1000 tonnes)	Bitumen (1000 tonnes)	Paraffin Waxes (1000 tonnes)	Non-specified Petroleum Prods. (1000 tonnes)
Production	36.6	-	-	-	-	-	-	-	-	-	-	-	-
Imports	1.4	42.8	624.2	129.8	-	541.6	4.9	0.0	-	29.3	124.9	-	0.7
Exports	-	0.0	22.1	-	-	6.3	-	18.8	-	5.1	0.2	-	0.2
International Marine Bunkers	-	-	-	-	-	3.2	-	-	-	-	-	-	-
International Aviation Bunkers	-	-	-	132.4	-	-	-	-	-	-	-	-	-
Stock Changes	-3.6	-0.6	4.1	3.1	-	14.9	-0.6	0.6	-	0.2	1.8	-	-0.7
<b>DOMESTIC SUPPLY</b>	<b>34.4</b>	<b>42.2</b>	<b>606.2</b>	<b>0.5</b>	<b>-</b>	<b>547.0</b>	<b>4.3</b>	<b>-18.2</b>	<b>-</b>	<b>24.3</b>	<b>126.6</b>	<b>-</b>	<b>-0.3</b>
Transfers	-	-	-	-	-	-	-	-	-	-	-	-	-
Statistical Differences	-8.5	0.0	0.0	0.0	-	0.0	0.0	0.0	-	0.0	0.0	-	0.0
<b>Transformation Sector - Input</b>	<b>42.9</b>	<b>-</b>	<b>-</b>	<b>-</b>	<b>-</b>	<b>-</b>	<b>-</b>	<b>-</b>	<b>-</b>	<b>-</b>	<b>-</b>	<b>-</b>	<b>-</b>
Petroleum Refineries	42.9	-	-	-	-	-	-	-	-	-	-	-	-
<b>Transformation Sector - Production</b>	<b>-</b>	<b>-</b>	<b>5.1</b>	<b>-</b>	<b>-</b>	<b>14.4</b>	<b>0.8</b>	<b>18.7</b>	<b>-</b>	<b>-</b>	<b>0.8</b>	<b>-</b>	<b>3.1</b>
Petroleum Refineries	-	-	5.1	-	-	14.4	0.8	18.7	-	-	0.8	-	3.1
<b>FINAL CONSUMPTION</b>	<b>-</b>	<b>42.2</b>	<b>611.3</b>	<b>0.5</b>	<b>-</b>	<b>561.4</b>	<b>5.1</b>	<b>0.4</b>	<b>-</b>	<b>24.3</b>	<b>127.4</b>	<b>-</b>	<b>2.8</b>
<b>Industry</b>	<b>-</b>	<b>0.0</b>	<b>-</b>	<b>-</b>	<b>-</b>	<b>115.3</b>	<b>0.1</b>	<b>0.4</b>	<b>-</b>	<b>-</b>	<b>-</b>	<b>-</b>	<b>-</b>
Iron and steel	-	-	-	-	-	-	0.1	-	-	-	-	-	-
Chemical (including petrochemical)	-	-	-	-	-	-	-	-	-	-	-	-	-
Non-ferrous metals	-	-	-	-	-	-	-	-	-	-	-	-	-
Non-metallic minerals	-	0.0	-	-	-	-	-	-	-	-	-	-	-
Transport equipment	-	-	-	-	-	-	-	-	-	-	-	-	-
Machinery	-	0.0	-	-	-	-	-	-	-	-	-	-	-

## OIL AND OIL PRODUCTS

	Crude Oil (1000 tonnes)	Liquefied Petroleum Gases (1000 tonnes)	Motor Gasoline (1000 tonnes)	Kerosene type Jet Fuel (1000 tonnes)	Kerosene (1000 tonnes)	Road diesel (1000 tonnes)	Heating and other gas oil (1000 tonnes)	Fuel oil-low sulphur (< 1%) (1000 tonnes)	Fuel oil-high sulphur (>= 1%) (1000 tonnes)	Lubricants (1000 tonnes)	Bitumen (1000 tonnes)	Paraffin Waxes (1000 tonnes)	Non-specified Petroleum Prods. (1000 tonnes)
Mining and quarrying <sup>1</sup>	-	-	-	-	-	39.9	-	-	-	-	-	-	-
Food, beverages and tobacco	-	0.0	-	-	-	-	-	0.4	-	-	-	-	-
Paper, pulp and printing	-	0.0	-	-	-	-	-	-	-	-	-	-	-
Wood and wood products	-	-	-	-	-	-	-	-	-	-	-	-	-
Construction	-	0.0	-	-	-	75.4	0.0	0.0	-	-	-	-	-
Textiles and leather	-	0.0	-	-	-	-	-	-	-	-	-	-	-
Not elsewhere specified (Industry)	-	0.0	-	-	-	-	-	-	-	-	-	-	-
<b>Transport</b>	-	<b>37.0</b>	<b>609.8</b>	<b>0.5</b>	-	<b>438.8</b>	<b>4.5</b>	-	-	-	-	-	-
International aviation	-	-	-	-	-	-	-	-	-	-	-	-	-
Domestic aviation	-	-	-	0.5	-	-	-	-	-	-	-	-	-
Road	-	37.0	609.8	-	-	438.8	-	-	-	-	-	-	-
Rail	-	-	-	-	-	-	1.3	-	-	-	-	-	-
Domestic navigation	-	-	-	-	-	-	0.3	-	-	-	-	-	-
Pipeline transport	-	-	-	-	-	-	3.0	-	-	-	-	-	-
<b>Other</b>	-	<b>5.2</b>	<b>1.6</b>	-	-	<b>7.3</b>	<b>0.4</b>	-	-	-	-	-	-
Commercial and public services	-	0.1	-	-	-	-	-	-	-	-	-	-	-
Residential	-	5.1	-	-	-	-	-	-	-	-	-	-	-
Agriculture/forestry/fishing	-	0.0	1.6	-	-	7.3	0.4	-	-	-	-	-	-
<b>Non-energy use</b>	-	-	-	-	-	-	-	-	-	<b>24.3</b>	<b>127.4</b>	-	<b>2.8</b>
<b>Energy sector</b>	-	-	-	-	-	-	-	-	-	<b>0.5</b>	-	-	-

<sup>1</sup> Including non-ferrous metals

## OIL AND OIL PRODUCTS

	Crude Oil (1000 tonnes)	Liquefied Petroleum Gases (1000 tonnes)	Motor Gasoline (1000 tonnes)	Kerosene type Jet Fuel (1000 tonnes)	Kerosene (1000 tonnes)	Road diesel (1000 tonnes)	Heating and other gas oil (1000 tonnes)	Fuel oil-low sulphur (< 1%) (1000 tonnes)	Fuel oil-high sulphur (>= 1%) (1000 tonnes)	Lubricants (1000 tonnes)	Bitumen (1000 tonnes)	Paraffin Waxes (1000 tonnes)	Non-specified Petroleum Prods. (1000 tonnes)
<b>Transport sector</b>	-	-	-	-	-	-	-	-	-	<b>22.6</b>	-	-	-
Domestic aviation	-	-	-	-	-	-	-	-	-	0.0	-	-	-
Road	-	-	-	-	-	-	-	-	-	22.4	-	-	-
Rail	-	-	-	-	-	-	-	-	-	0.2	-	-	-
Domestic navigation	-	-	-	-	-	-	-	-	-	0.0	-	-	-
<b>Industry sector</b>	-	-	-	-	-	-	-	-	-	<b>1.2</b>	<b>127.4</b>	-	<b>2.8</b>
Iron and steel	-	-	-	-	-	-	-	-	-	0.0	-	-	-
Chemical (including petrochemical)	-	-	-	-	-	-	-	-	-	-	-	-	2.8
Non-metallic minerals	-	-	-	-	-	-	-	-	-	0.1	3.3	-	-
Machinery	-	-	-	-	-	-	-	-	-	0.0	-	-	-
Mining and quarrying <sup>2</sup>	-	-	-	-	-	-	-	-	-	1.0	-	-	-
Food, beverages and tobacco	-	-	-	-	-	-	-	-	-	0.0	-	-	-
Paper, pulp and printing	-	-	-	-	-	-	-	-	-	-	-	-	-
Wood and wood products	-	-	-	-	-	-	-	-	-	-	-	-	-
Construction	-	-	-	-	-	-	-	-	-	0.1	124.0	-	-
Textiles and leather	-	-	-	-	-	-	-	-	-	-	-	-	-
Not elsewhere specified (Industry)	-	-	-	-	-	-	-	-	-	0.0	-	-	-
<b>Other sectors</b>	-	-	-	-	-	-	-	-	-	<b>0.0</b>	-	-	-
Agriculture/forestry/fishing	-	-	-	-	-	-	-	-	-	0.0	-	-	-
Not elsewhere specified (Other)	-	-	-	-	-	-	-	-	-	-	-	-	-

<sup>2</sup> Including non-ferrous metals



## SUPPLY AND CONSUMPTION OF OIL AND OIL PRODUCTS, 2022

(TJ)

	Crude Oil	Liquefied Petroleum Gases	Motor Gasoline	Kerosene type Jet Fuel	Kerosene	Road diesel	Heating and other gas oil	Fuel oil-low sulph. (< 1%)	Fuel oil-high sulph. (>=1%)	Lubricants	Bitumen	Paraffin Waxes	Non-specified Petroleum Prods.	Total
Production	1 555.5	-	-	-	-	-	-	-	-	-	-	-	-	1 555.5
Imports	60.1	1 968.0	27 466.7	5 580.8	-	23 073.1	208.9	1.0	-	111.8	4 746.3	-	24.8	64 241.5
Exports	-	0.1	973.6	-	-	268.6	-	756.2	-	195.1	7.4	-	8.7	2 209.7
International Marine Bunkers	-	-	-	-	-	137.1	-	-	-	-	-	-	-	137.1
International Aviation Bunkers	-	-	-	5 695.2	-	-	-	-	-	-	-	-	-	5 695.2
Stock Changes	-152.2	-25.8	179.6	135.1	-	634.6	-27.2	22.4	-	7.3	70.3	-	-27.2	816.9
<b>DOMESTIC SUPPLY</b>	<b>1 463.4</b>	<b>1 942.1</b>	<b>26 672.7</b>	<b>20.8</b>	<b>-</b>	<b>23 302.0</b>	<b>181.7</b>	<b>-732.8</b>	<b>-</b>	<b>924.0</b>	<b>4 809.1</b>	<b>-</b>	<b>-11.1</b>	<b>58 571.9</b>
Available	1 463.4	1 942.1	26 898.4	20.8	-	23 913.9	215.7	17.8	-	924.0	4 840.9	-	105.3	60 342.3
Transfers	-	-	-	-	-	-	-	-	-	-	-	-	-	-
Statistical Differences	-359.2	0.0	0.0	0.0	-	0.0	0.0	0.0	-	0.0	0.0	-	0.0	-359.2
<b>Transformation Sector - Input</b>	<b>1 822.5</b>	<b>-</b>	<b>-</b>	<b>-</b>	<b>-</b>	<b>-</b>	<b>-</b>	<b>-</b>	<b>-</b>	<b>-</b>	<b>-</b>	<b>-</b>	<b>-</b>	<b>1 822.5</b>
Petroleum Refineries	1 822.5	-	-	-	-	-	-	-	-	-	-	-	-	1 822.5
<b>Transformation Sector - Production</b>	<b>-</b>	<b>-</b>	<b>225.7</b>	<b>-</b>	<b>-</b>	<b>611.9</b>	<b>34.0</b>	<b>750.6</b>	<b>-</b>	<b>-</b>	<b>31.8</b>	<b>-</b>	<b>116.4</b>	<b>1 770.3</b>
Petroleum Refineries	-	-	225.7	-	-	611.9	34.0	750.6	-	-	31.8	-	116.4	1 770.3
<b>FINAL CONSUMPTION</b>	<b>-</b>	<b>1 942.1</b>	<b>26 898.4</b>	<b>20.8</b>	<b>-</b>	<b>23 913.9</b>	<b>215.7</b>	<b>17.8</b>	<b>-</b>	<b>924.0</b>	<b>4 840.9</b>	<b>-</b>	<b>105.3</b>	<b>58 878.9</b>
<b>Industry</b>	<b>-</b>	<b>1.3</b>	<b>-</b>	<b>-</b>	<b>-</b>	<b>4 909.9</b>	<b>4.2</b>	<b>17.8</b>	<b>-</b>	<b>-</b>	<b>-</b>	<b>-</b>	<b>-</b>	<b>4 933.3</b>
Iron and steel	-	-	-	-	-	-	4.1	-	-	-	-	-	-	4.1
Chemical (including petrochemical)	-	-	-	-	-	-	-	-	-	-	-	-	-	-
Non-ferrous metals	-	-	-	-	-	-	-	-	-	-	-	-	-	-

## OIL AND OIL PRODUCTS

	Crude Oil	Liquefied Petroleum Gases	Motor Gasoline	Kerosene type Jet Fuel	Kerosene	Road diesel	Heating and other gas oil	Fuel oil-low sulph. (< 1%)	Fuel oil-high sulph. (>=1%)	Lubricants	Bitumen	Paraffin Waxes	Non-specified Petroleum Prods.	Total
Non-metallic minerals	-	0.0	-	-	-	-	-	-	-	-	-	-	-	0.0
Transport equipment	-	-	-	-	-	-	-	-	-	-	-	-	-	-
Machinery	-	0.0	-	-	-	-	-	-	-	-	-	-	-	0.0
Mining and quarrying <sup>3</sup>	-	-	-	-	-	1 699.3	-	-	-	-	-	-	-	1 699.3
Food, beverages and tobacco	-	0.8	-	-	-	-	-	17.8	-	-	-	-	-	18.6
Paper, pulp and printing	-	0.0	-	-	-	-	-	-	-	-	-	-	-	0.0
Wood and wood products	-	-	-	-	-	-	-	-	-	-	-	-	-	-
Construction	-	0.1	-	-	-	3 210.6	0.1	0.0	-	-	-	-	-	3 210.9
Textiles and leather	-	0.3	-	-	-	-	-	-	-	-	-	-	-	0.3
Not elsewhere specified (Industry)	-	0.0	-	-	-	-	-	-	-	-	-	-	-	0.0
<b>Transport</b>	-	<b>1 703.0</b>	<b>26 830.1</b>	<b>20.8</b>	-	<b>18 693.0</b>	<b>193.7</b>	-	-	-	-	-	-	<b>47 440.6</b>
International aviation	-	-	-	-	-	-	-	-	-	-	-	-	-	-
Domestic aviation	-	-	-	20.8	-	-	-	-	-	-	-	-	-	20.8
Road	-	1 703.0	26 830.1	-	-	18 693.0	-	-	-	-	-	-	-	47 226.1
Rail	-	-	-	-	-	-	53.6	-	-	-	-	-	-	53.6
Domestic navigation	-	-	-	-	-	-	13.6	-	-	-	-	-	-	13.6
Pipeline transport	-	-	-	-	-	-	126.5	-	-	-	-	-	-	126.5
<b>Other</b>	-	<b>237.9</b>	<b>68.2</b>	-	-	<b>311.0</b>	<b>17.7</b>	-	-	-	-	-	-	<b>634.8</b>
Commercial and public services	-	2.4	-	-	-	-	-	-	-	-	-	-	-	2.4
Residential	-	235.0	-	-	-	-	-	-	-	-	-	-	-	235.0
Agriculture/forestry/fishing	-	0.4	68.2	-	-	311.0	17.7	-	-	-	-	-	-	397.4
<b>Non-energy use</b>	-	-	-	-	-	-	-	-	-	<b>924.0</b>	<b>4 840.9</b>	-	<b>105.3</b>	<b>5 870.2</b>

<sup>3</sup> Including non-ferrous metals

## OIL AND OIL PRODUCTS

	Crude Oil	Liquefied Petroleum Gases	Motor Gasoline	Kerosene type Jet Fuel	Kerosene	Road diesel	Heating and other gas oil	Fuel oil-low sulph. (< 1%)	Fuel oil-high sulph. (>=1%)	Lubricants	Bitumen	Paraffin Waxes	Non-specified Petroleum Prods.	Total
<b>Energy sector</b>	-	-	-	-	-	-	-	-	-	<b>18.4</b>	-	-	-	<b>18.4</b>
<b>Transport sector</b>	-	-	-	-	-	-	-	-	-	<b>860.1</b>	-	-	-	<b>860.1</b>
Domestic aviation	-	-	-	-	-	-	-	-	-	0.0	-	-	-	0.0
Road	-	-	-	-	-	-	-	-	-	849.8	-	-	-	849.8
Rail	-	-	-	-	-	-	-	-	-	9.4	-	-	-	9.4
Domestic navigation	-	-	-	-	-	-	-	-	-	0.9	-	-	-	0.9
<b>Industry sector</b>	-	-	-	-	-	-	-	-	-	<b>44.5</b>	<b>4 840.9</b>	-	<b>105.3</b>	<b>4 990.7</b>
Iron and steel	-	-	-	-	-	-	-	-	-	1.7	-	-	-	1.7
Chemical (including petrochemical)	-	-	-	-	-	-	-	-	-	-	-	-	105.3	105.3
Non-metallic minerals	-	-	-	-	-	-	-	-	-	3.0	127.1	-	-	130.2
Machinery	-	-	-	-	-	-	-	-	-	0.0	-	-	-	0.0
Mining and quarrying <sup>4</sup>	-	-	-	-	-	-	-	-	-	37.0	-	-	-	37.0
Food, beverages and tobacco	-	-	-	-	-	-	-	-	-	0.3	-	-	-	0.3
Paper, pulp and printing	-	-	-	-	-	-	-	-	-	-	-	-	-	-
Wood and wood products	-	-	-	-	-	-	-	-	-	-	-	-	-	-
Construction	-	-	-	-	-	-	-	-	-	2.1	4 713.8	-	-	4 715.9
Textiles and leather	-	-	-	-	-	-	-	-	-	-	-	-	-	-
Not elsewhere specified (Industry)	-	-	-	-	-	-	-	-	-	0.4	-	-	-	0.4
<b>Other sectors</b>	-	-	-	-	-	-	-	-	-	<b>1.0</b>	-	-	-	<b>1.0</b>
Agriculture/forestry/fishing	-	-	-	-	-	-	-	-	-	1.0	-	-	-	1.0
Not elsewhere specified (Other)	-	-	-	-	-	-	-	-	-	-	-	-	-	-

<sup>4</sup> Including non-ferrous metals

## OIL AND OIL PRODUCTS

### SUPPLY AND CONSUMPTION OF OIL AND OIL PRODUCTS, 2022

(Thousand tonnes of oil equivalent)

	Crude Oil	Liquefied Petroleum Gases	Motor Gasoline	Kerosene type Jet Fuel	Kerosene	Road diesel	Heating and other gas oil	Fuel oil-low sulph. (< 1%)	Fuel oil-high sulph. (>=1%)	Lubricants	Bitumen	Paraffin Waxes	Non-specified Petroleum Prods.	Total
Production	37.2	-	-	-	-	-	-	-	-	-	-	-	-	37.2
Imports	1.4	47.0	656.0	133.3	-	551.1	5.0	0.0	-	26.6	113.4	-	0.6	1 534.4
Exports	-	0.0	23.3	-	-	6.4	-	18.1	-	4.7	0.2	-	0.2	52.8
International Marine Bunkers	-	-	-	-	-	3.3	-	-	-	-	-	-	-	3.3
International Aviation Bunkers	-	-	-	136.0	-	-	-	-	-	-	-	-	-	136.0
Stock Changes	-3.6	-0.6	4.3	3.2	-	15.2	-0.6	0.5	-	0.2	1.7	-	-0.6	19.5
<b>DOMESTIC SUPPLY</b>	<b>35.0</b>	<b>46.4</b>	<b>637.1</b>	<b>0.5</b>	<b>-</b>	<b>556.6</b>	<b>4.3</b>	<b>-17.5</b>	<b>-</b>	<b>22.1</b>	<b>114.9</b>	<b>-</b>	<b>-0.3</b>	<b>1 399.0</b>
Available	35.0	46.4	642.5	0.5	-	571.2	5.2	0.4	-	22.1	115.6	-	2.5	1 441.3
Transfers	-	-	-	-	-	-	-	-	-	-	-	-	-	-
Statistical Differences	-8.6	0.0	0.0	0.0	-	0.0	0.0	0.0	-	0.0	0.0	-	0.0	-8.6
<b>Transformation Sector - Input</b>	<b>43.5</b>	<b>-</b>	<b>-</b>	<b>-</b>	<b>-</b>	<b>-</b>	<b>-</b>	<b>-</b>	<b>-</b>	<b>-</b>	<b>-</b>	<b>-</b>	<b>-</b>	<b>43.5</b>
Petroleum Refineries	43.5	-	-	-	-	-	-	-	-	-	-	-	-	43.5
<b>Transformation Sector - Production</b>	<b>-</b>	<b>-</b>	<b>5.4</b>	<b>-</b>	<b>-</b>	<b>14.6</b>	<b>0.8</b>	<b>17.9</b>	<b>-</b>	<b>-</b>	<b>0.8</b>	<b>-</b>	<b>2.8</b>	<b>42.3</b>
Petroleum Refineries	-	-	5.4	-	-	14.6	0.8	17.9	-	-	0.8	-	2.8	42.3
<b>FINAL CONSUMPTION</b>	<b>-</b>	<b>46.4</b>	<b>642.5</b>	<b>0.5</b>	<b>-</b>	<b>571.2</b>	<b>5.2</b>	<b>0.4</b>	<b>-</b>	<b>22.1</b>	<b>115.6</b>	<b>-</b>	<b>2.5</b>	<b>1 406.3</b>
<b>Industry</b>	<b>-</b>	<b>0.0</b>	<b>-</b>	<b>-</b>	<b>-</b>	<b>117.3</b>	<b>0.1</b>	<b>0.4</b>	<b>-</b>	<b>-</b>	<b>-</b>	<b>-</b>	<b>-</b>	<b>117.8</b>
Iron and steel	-	-	-	-	-	-	0.1	-	-	-	-	-	-	0.1
Chemical (including petrochemical)	-	-	-	-	-	-	-	-	-	-	-	-	-	-
Non-ferrous metals	-	-	-	-	-	-	-	-	-	-	-	-	-	-
Non-metallic minerals	-	0.0	-	-	-	-	-	-	-	-	-	-	-	0.0
Transport equipment	-	-	-	-	-	-	-	-	-	-	-	-	-	-

## OIL AND OIL PRODUCTS

	Crude Oil	Liquefied Petroleum Gases	Motor Gasoline	Kerosene type Jet Fuel	Kerosene	Road diesel	Heating and other gas oil	Fuel oil-low sulph. (< 1%)	Fuel oil-high sulph. (>=1%)	Lubricants	Bitumen	Paraffin Waxes	Non-specified Petroleum Prods.	Total
Machinery	-	0.0	-	-	-	-	-	-	-	-	-	-	-	0.0
Mining and quarrying <sup>5</sup>	-	-	-	-	-	40.6	-	-	-	-	-	-	-	40.6
Food, beverages and tobacco	-	0.0	-	-	-	-	-	0.4	-	-	-	-	-	0.4
Paper, pulp and printing	-	0.0	-	-	-	-	-	-	-	-	-	-	-	0.0
Wood and wood products	-	-	-	-	-	-	-	-	-	-	-	-	-	-
Construction	-	0.0	-	-	-	76.7	0.0	0.0	-	-	-	-	-	76.7
Textiles and leather	-	0.0	-	-	-	-	-	-	-	-	-	-	-	0.0
Not elsewhere specified (Industry)	-	0.0	-	-	-	-	-	-	-	-	-	-	-	0.0
<b>Transport</b>	-	<b>40.7</b>	<b>640.8</b>	<b>0.5</b>	-	<b>446.5</b>	<b>4.6</b>	-	-	-	-	-	-	<b>1 133.1</b>
International aviation	-	-	-	-	-	-	-	-	-	-	-	-	-	-
Domestic aviation	-	-	-	0.5	-	-	-	-	-	-	-	-	-	0.5
Road	-	40.7	640.8	-	-	446.5	-	-	-	-	-	-	-	1 128.0
Rail	-	-	-	-	-	-	1.3	-	-	-	-	-	-	1.3
Domestic navigation	-	-	-	-	-	-	0.3	-	-	-	-	-	-	0.3
Pipeline transport	-	-	-	-	-	-	3.0	-	-	-	-	-	-	3.0
<b>Other</b>	-	<b>5.7</b>	<b>1.6</b>	-	-	<b>7.4</b>	<b>0.4</b>	-	-	-	-	-	-	<b>15.2</b>
Commercial and public services	-	0.1	-	-	-	-	-	-	-	-	-	-	-	0.1
Residential	-	5.6	-	-	-	-	-	-	-	-	-	-	-	5.6
Agriculture/forestry/fishing	-	0.0	1.6	-	-	7.4	0.4	-	-	-	-	-	-	9.5
<b>Non-energy use</b>	-	-	-	-	-	-	-	-	-	<b>22.1</b>	<b>115.6</b>	-	<b>2.5</b>	<b>140.2</b>
<b>Energy sector</b>	-	-	-	-	-	-	-	-	-	<b>0.4</b>	-	-	-	<b>0.4</b>

<sup>5</sup> Including non-ferrous metals

## OIL AND OIL PRODUCTS

	Crude Oil	Liquefied Petroleum Gases	Motor Gasoline	Kerosene type Jet Fuel	Kerosene	Road diesel	Heating and other gas oil	Fuel oil-low sulph. (< 1%)	Fuel oil-high sulph. (>=1%)	Lubricants	Bitumen	Paraffin Waxes	Non-specified Petroleum Prods.	Total
<b>Transport sector</b>	-	-	-	-	-	-	-	-	-	<b>20.5</b>	-	-	-	<b>20.5</b>
Domestic aviation	-	-	-	-	-	-	-	-	-	0.0	-	-	-	0.0
Road	-	-	-	-	-	-	-	-	-	20.3	-	-	-	20.3
Rail	-	-	-	-	-	-	-	-	-	0.2	-	-	-	0.2
Domestic navigation	-	-	-	-	-	-	-	-	-	0.0	-	-	-	0.0
<b>Industry sector</b>	-	-	-	-	-	-	-	-	-	<b>1.1</b>	<b>115.6</b>	-	<b>2.5</b>	<b>119.2</b>
Iron and steel	-	-	-	-	-	-	-	-	-	0.0	-	-	-	0.0
Chemical (including petrochemical)	-	-	-	-	-	-	-	-	-	-	-	-	2.5	2.5
Non-metallic minerals	-	-	-	-	-	-	-	-	-	0.1	3.0	-	-	3.1
Machinery	-	-	-	-	-	-	-	-	-	0.0	-	-	-	0.0
Mining and quarrying <sup>6</sup>	-	-	-	-	-	-	-	-	-	0.9	-	-	-	0.9
Food, beverages and tobacco	-	-	-	-	-	-	-	-	-	0.0	-	-	-	0.0
Paper, pulp and printing	-	-	-	-	-	-	-	-	-	-	-	-	-	-
Wood and wood products	-	-	-	-	-	-	-	-	-	-	-	-	-	-
Construction	-	-	-	-	-	-	-	-	-	0.0	112.6	-	-	112.6
Textiles and leather	-	-	-	-	-	-	-	-	-	-	-	-	-	-
Not elsewhere specified (Industry)	-	-	-	-	-	-	-	-	-	0.0	-	-	-	0.0
<b>Other sectors</b>	-	-	-	-	-	-	-	-	-	<b>0.0</b>	-	-	-	<b>0.0</b>
Agriculture/forestry/fishing	-	-	-	-	-	-	-	-	-	0.0	-	-	-	0.0
Not elsewhere specified (Other)	-	-	-	-	-	-	-	-	-	-	-	-	-	-

<sup>6</sup> Including non-ferrous metals

# ***BIOFUEL AND WASTE***



## SUPPLY AND CONSUMPTION OF BIOFUEL AND WASTE IN PHYSICAL UNITS, 2022

	Fuel wood (1000 m <sup>3</sup> )	Other vegetal materials and residual (1000 t)	Biodiesel (1000 t)	Charcoal (1000 t)
Production	1 113.5	6.3	0.0	0.0
Imports	-	-	-	-
Exports	3.0	-	-	-
Stock Changes	-	-	-	-
<b>DOMESTIC SUPPLY</b>	<b>1 110.5</b>	<b>6.3</b>	<b>0.0</b>	<b>0.0</b>
Transfers	-	-	-	-
Statistical Differences	0.0	0.0	0.0	0.0
<b>FINAL CONSUMPTION</b>	<b>1 110.5</b>	<b>6.3</b>	<b>0.0</b>	<b>0.0</b>
<b>Industry</b>	<b>2.8</b>	<b>0.0</b>	-	-
Non-metallic minerals	0.1	-	-	-
Machinery	-	-	-	-
Food, beverages and tobacco	2.7	-	-	-
Wood and wood products	-	-	-	-
Construction	-	-	-	-
Not elsewhere specified (Industry)	-	0.0	-	-
<b>Transport</b>	-	-	<b>0.0</b>	-
Road	-	-	0.0	-
<b>Other</b>	<b>1 107.7</b>	<b>6.3</b>	-	<b>0.0</b>
Commercial and public services	6.1	0.6	-	0.0
Residential	1 101.7	5.8	-	-
Agriculture/forestry/fishing	-	-	-	-



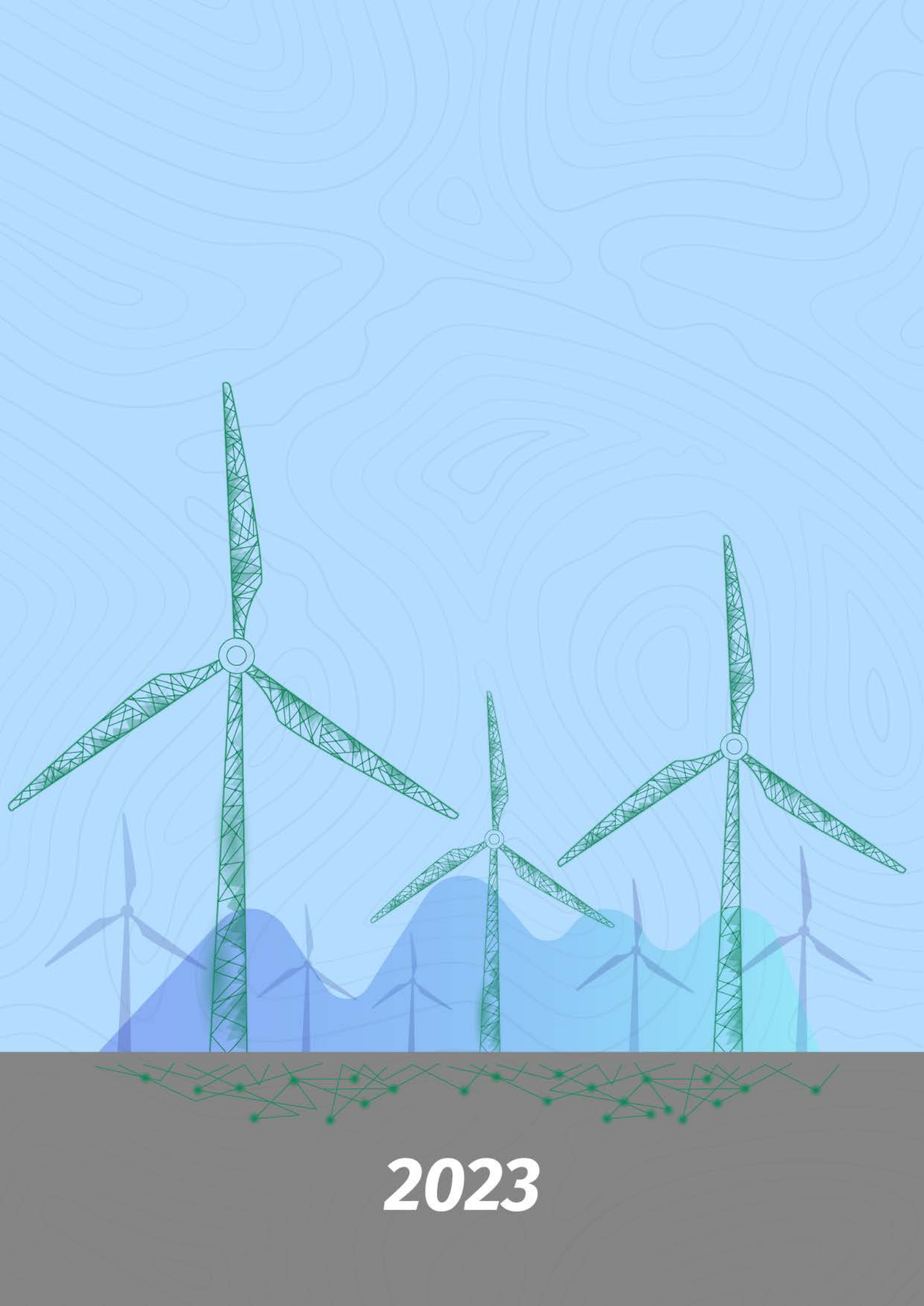
**SUPPLY AND CONSUMPTION OF BIOFUEL AND WASTE, 2022**  
(TJ)

	Fuel wood	Other vegetal materials and residual	Biodiesel (1000 t)	Charcoal	Total
Production	8 685.6	50.5	0.5	0.0	8 736.5
Imports	-	-	-	-	-
Exports	23.4	-	-	-	23.4
Stock Changes	-	-	-	-	-
<b>DOMESTIC SUPPLY</b>	<b>8 662.2</b>	<b>50.5</b>	<b>0.5</b>	<b>0.0</b>	<b>8 713.2</b>
Available	8 662.2	50.5	0.5	0.0	8 713.2
Transfers	-	-	-	-	-
Statistical Differences	0.0	0.0	0.0	0.0	0.0
<b>FINAL CONSUMPTION</b>	<b>8 662.2</b>	<b>50.5</b>	<b>0.5</b>	<b>0.0</b>	<b>8 713.2</b>
<b>Industry</b>	<b>21.8</b>	<b>0.0</b>	<b>-</b>	<b>-</b>	<b>21.8</b>
Non-metallic minerals	0.5	-	-	-	0.5
Machinery	-	-	-	-	-
Food, beverages and tobacco	21.3	-	-	-	21.3
Wood and wood products	-	-	-	-	-
Construction	-	-	-	-	-
Not elsewhere specified (Industry)	-	0.0	-	-	0.0
<b>Transport</b>	<b>-</b>	<b>-</b>	<b>0.5</b>	<b>-</b>	<b>0.5</b>
<b>Road</b>	<b>-</b>	<b>-</b>	<b>0.5</b>	<b>-</b>	<b>0.5</b>
<b>Other</b>	<b>8 640.4</b>	<b>50.5</b>	<b>-</b>	<b>0.0</b>	<b>8 691.0</b>
Commercial and public services	47.4	4.5	-	0.0	51.9
Residential	8 593.0	46.0	-	-	8 639.0
Agriculture/forestry/fishing	-	-	-	-	-

**SUPPLY AND CONSUMPTION OF BIOFUEL AND WASTE, 2022**

(Thousand tonnes of oil equivalent)

	Fuel wood	Other vegetal materials and residual	Biodiesel	Charcoal	Total
Production	207.5	1.2	0.0	0.0	208.7
Imports	-	-	-	-	-
Exports	0.6	-	-	-	0.6
Stock Changes	-	-	-	-	-
<b>DOMESTIC SUPPLY</b>	<b>206.9</b>	<b>1.2</b>	<b>0.0</b>	<b>0.0</b>	<b>208.1</b>
Available	206.9	1.2	0.0	0.0	208.1
Transfers	-	-	-	-	-
Statistical Differences	0.0	0.0	0.0	0.0	0.0
<b>FINAL CONSUMPTION</b>	<b>206.9</b>	<b>1.2</b>	<b>0.0</b>	<b>0.0</b>	<b>208.1</b>
<b>Industry</b>	<b>0.5</b>	<b>0.0</b>	<b>-</b>	<b>-</b>	<b>0.5</b>
Non-metallic minerals	0.0	-	-	-	0.0
Machinery	-	-	-	-	-
Food, beverages and tobacco	0.5	-	-	-	0.5
Wood and wood products	-	-	-	-	-
Construction	-	-	-	-	-
Not elsewhere specified (Industry)	-	0.0	-	-	0.0
<b>Transport</b>	<b>-</b>	<b>-</b>	<b>0.0</b>	<b>-</b>	<b>0.0</b>
Road	-	-	0.0	-	0.0
<b>Other</b>	<b>206.4</b>	<b>1.2</b>	<b>-</b>	<b>0.0</b>	<b>207.6</b>
Commercial and public services	1.1	0.1	-	0.0	1.2
Residential	205.2	1.1	-	-	206.3
Agriculture/forestry/fishing	-	-	-	-	-



**2023**