

EXTERNAL MERCHANDISE TRADE

JANUARY-JULY 2025 (PRELIMINARY)

CHANGE TO THE SAME PERIOD OF 2024

EXPORT

3 845.1 MILL. \$
+9.0%



IMPORT

10 310.7 MILL. \$
+10.8%

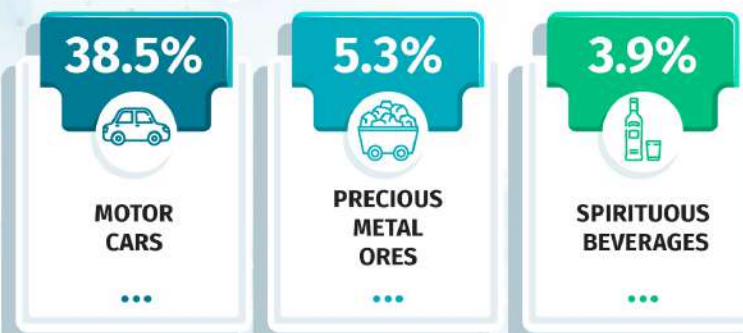
TOP 3 PARTNERS BY EXPORTS



TOP 3 PRODUCTS BY IMPORTS



TOP 3 PRODUCTS BY EXPORTS



TOP 3 PRODUCTS BY IMPORTS

