



**NATIONAL STATISTICS OFFICE OF GEORGIA**

# **RAPID ESTIMATES OF ECONOMIC GROWTH**

**NOVEMBER 2025**



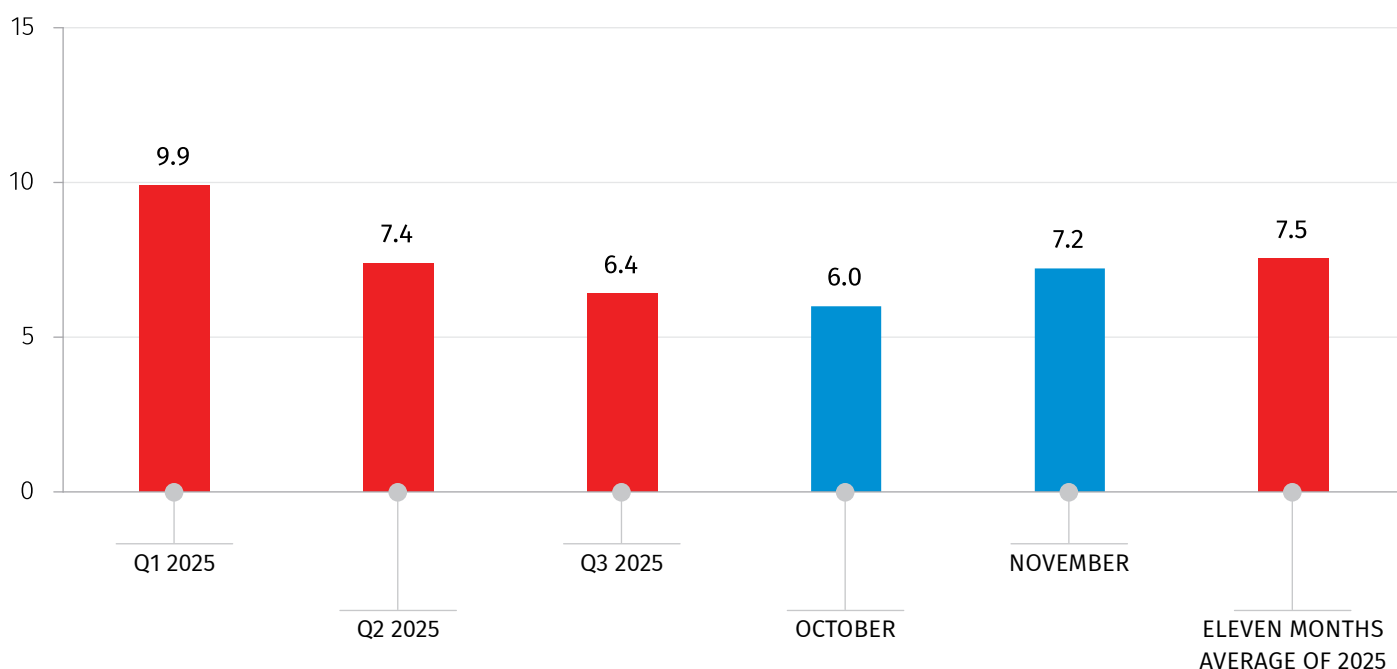
31.12.2025  
[www.geostat.ge](http://www.geostat.ge)

31.12.2025

**RAPID ESTIMATES OF ECONOMIC GROWTH,  
NOVEMBER 2025**

The estimated real Gross Domestic Product (GDP) growth rate amounted to 7.2 percent for November 2025 compared to previous year and the average real GDP growth for January-November 2025 equaled 7.5 percent.

**RAPID ESTIMATES OF ECONOMIC GROWTH,  
2025 YOY (%)**



In November 2025, compared to the same period of the previous year, the estimated real growth in following activities contributed significantly: Transportation and storage, Manufacturing, Real estate activities, Financial and insurance activities, Mining and quarrying.

Decline were registered in Construction and Energy sectors.

# NATIONAL STATISTICS OFFICE OF GEORGIA

31.12.2025

## MONTHLY ECONOMIC STATISTICS

NOVEMBER 2025

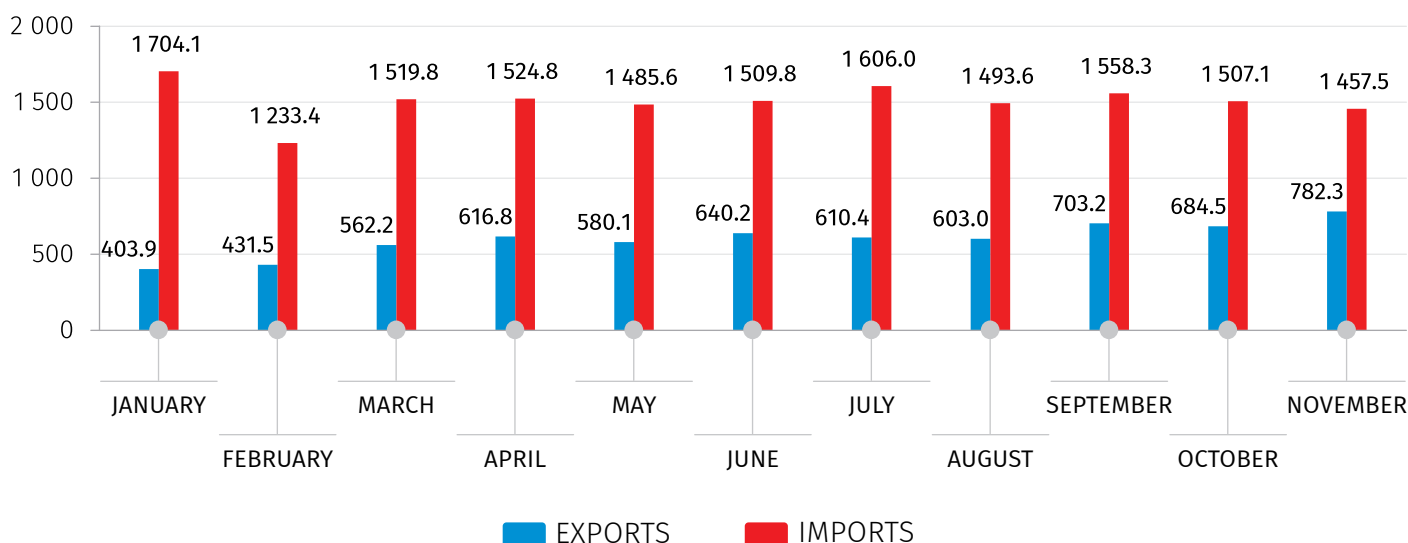
### INDICATORS OF PRICE STATISTICS

| INDICATOR  | YoY   | MoM   |
|--|-------|-------|
| Consumer Price Index (CPI)                         | 104.8 | 100.4 |
| Producer Price Index (PPI) for industrial products | 106.1 | 100.9 |

### INDICATORS OF EXTERNAL MERCHANDISE TRADE STATISTICS IN JANUARY-NOVEMBER 2025

| INDICATOR                           | MIL. US DOLLARS | CHANGE (YOY. %) |
|-------------------------------------|-----------------|-----------------|
| Exports of goods (FOB)              | 6 618.1         | 10.1            |
| Imports of goods (CIF)              | 16 600.0        | 9.3             |
| External merchandise trade turnover | 23 218.1        | 9.5             |

### EXTERNAL MERCHANDISE TRADE, 2025 (MIL. US DOLLARS)



**Note:** Individual figures may not sum up to the total due to rounding.

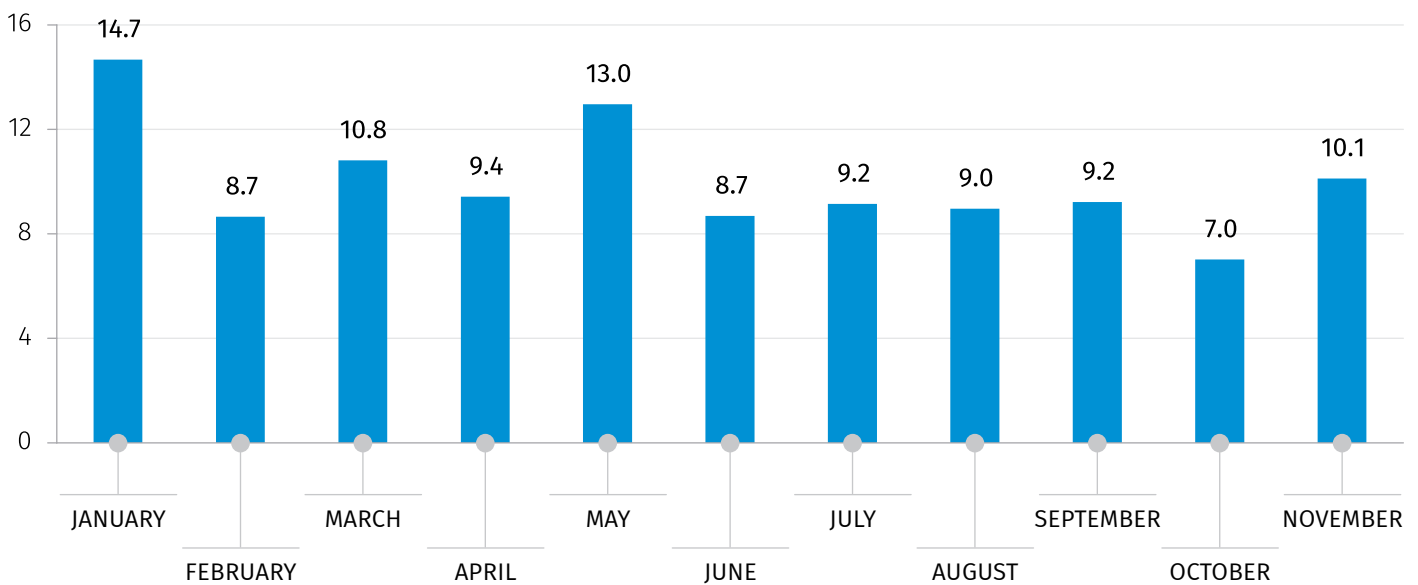
## NATIONAL STATISTICS OFFICE OF GEORGIA

31.12.2025

### INDICATORS OF BUSINESS STATISTICS, 2025

| INDICATOR  | NOVEMBER |
|--|----------|
| Number of newly registered enterprises (unit)  | 6 059    |
| Change in number of newly registered enterprises (YoY, %)                                    | -7.3     |
| Value Added Tax (VAT) payers' turnover used in rapid estimates of economic growth (mil. GEL) | 15 070.8 |
| Growth of VAT payers' turnover used in rapid estimates of economic growth (YoY, %)           | 10.1     |

### CHANGE OF VAT PAYERS' TURNOVER USED IN RAPID ESTIMATES OF ECONOMIC GROWTH, 2025 (YOY, %)

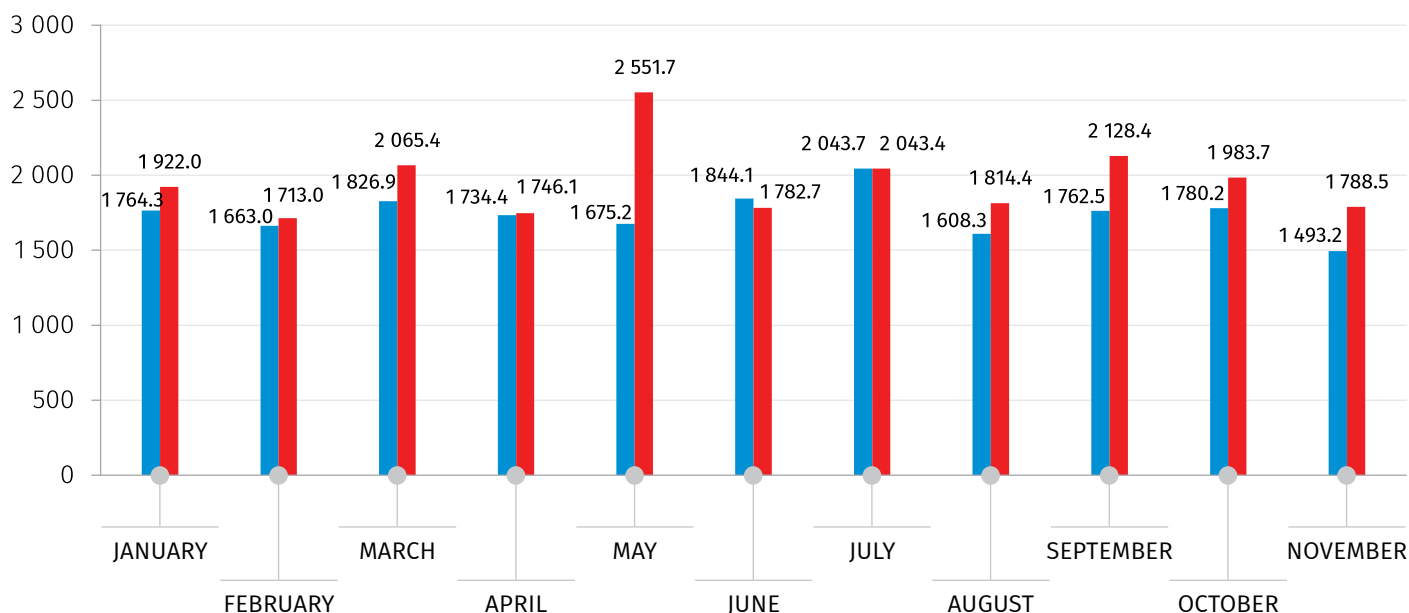


Source: Ministry of Finance of Georgia.

## NATIONAL STATISTICS OFFICE OF GEORGIA

31.12.2025

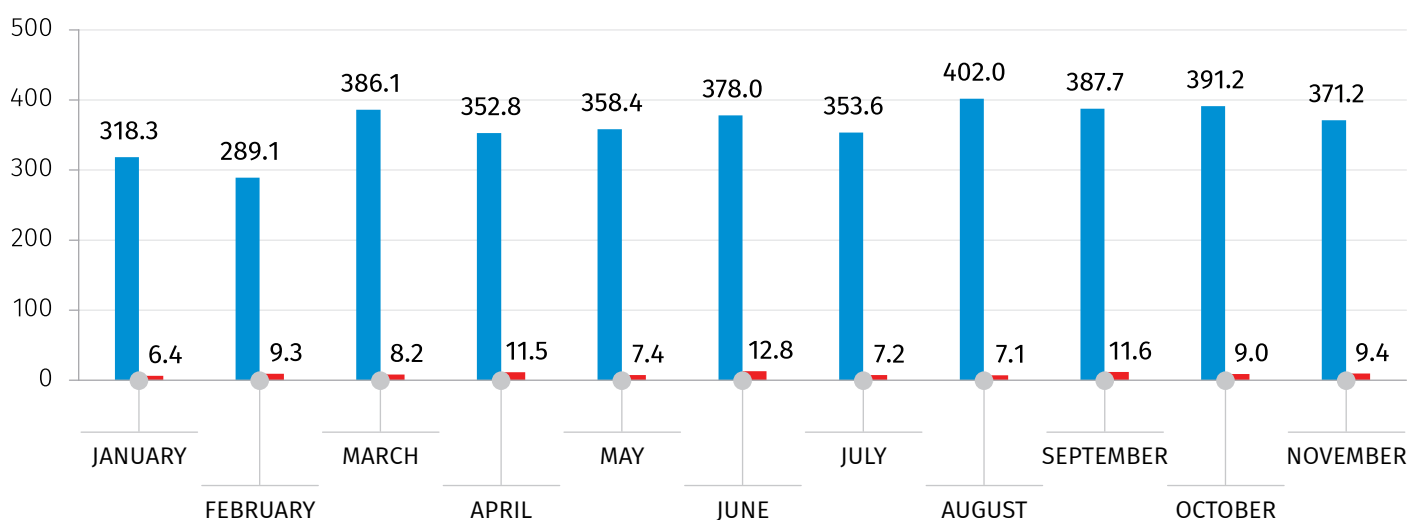
### INDICATORS OF STATE BUDGET, 2025 (MIL. GEL)



Source: Ministry of Finance of Georgia.

EXPENSE REVENUE

### OUTPUT OF BANKING SECTOR\*, 2025 (MIL. GEL)



\*Preliminary data.

Source: National Bank of Georgia.

COMMERCIAL BANKS NATIONAL BANK

## NATIONAL STATISTICS OFFICE OF GEORGIA

---

31.12.2025

### INFORMATION NOTE

Geostat produces monthly rapid estimates of real GDP growth rate using administrative data on VAT taxpayers' turnover, fiscal and monetary statistics. Compilation of rapid estimates is an internationally adopted practice to obtain preliminary monthly growth rate of real GDP. For those sectors, where preliminary monthly data do not exist (e.g. agriculture, non-observed economy etc.), estimations are based on the data for previous periods.

Furthermore, the data on VAT taxpayers' turnover for the previous months may be updated on a monthly basis, resulting in corresponding adjustments of real GDP growth rate estimates.

#### CONTACT PERSONS:

Maka Kalandarishvili

Tel.: (+995 32) 236 72 10 (302)

E-mail: [mkalandarishvili@geostat.ge](mailto:mkalandarishvili@geostat.ge)

Mariam Kavelashvili

Tel.: (+995 32) 236 72 10 (020).

E-mail: [mkavelashvili@geostat.ge](mailto:mkavelashvili@geostat.ge)