

SURVEY RESULTS FOR LIVESTOCK SLAUGHTERHOUSES, GRAIN STORAGE ELEVATORS AND COLD STORAGE FACILITIES

IV QUARTER, 2025

HOW MANY
FUNCTIONED

EMPLOYED
PERSONS



115

LIVESTOCK AND POULTRY SLAUGHTERHOUSES

969

353

COLD STORAGE FACILITIES

1742

33

GRAIN STORAGE ELEVATORS

423

HOW MANY CATTLE AND POULTRY WERE SLAUGHTERED, THOUSAND SOULS/ WINGS

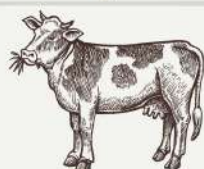
43.3
THOUSAND

97.8
THOUSAND

4.6
THOUSAND

2.9
THOUSAND

3 046.1
THOUSAND



CATTLE



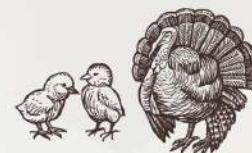
PIG



SHEEP AND GOATS



OTHERS (RABBITS,
HORSES, ETC.)



POULTRY

4 973.1

6 830.7

74.5

5.4

5 655.1

HOW MANY MEATS WERE PRODUCED, TONS

PRODUCTS STORED IN COLD
STORAGE FACILITIES



CHICKEN MEAT

26.6%



FRUITS AND VEGETABLES

24.1%



MEAT AND MEAT PRODUCTS
(EXCLUDING CHICKEN MEAT)

20.9%



FISH

15.6%



DAIRY PRODUCTS

6.5%



OTHER PRODUCTS

6.3%

STORED IN ELEVATORS

OTHER
PRODUCTS
33.6%

WHEAT
66.4%

